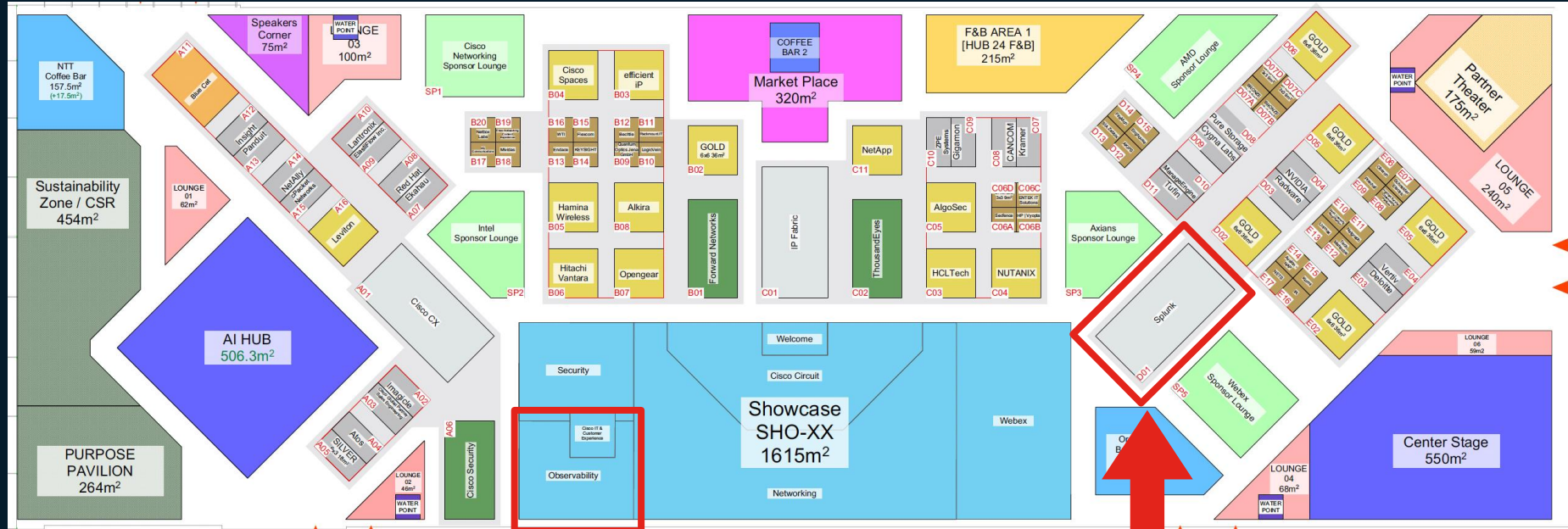




New innovations for Splunk AppDynamics that Enhance Observability for Hybrid and On-Prem Applications

Cale Hilts – Sr. Product Marketing Manager, Splunk AppDynamics
PSOBS-1889

For more information and to see a demo



Observability within
the Cisco Showcase

Splunk Booth



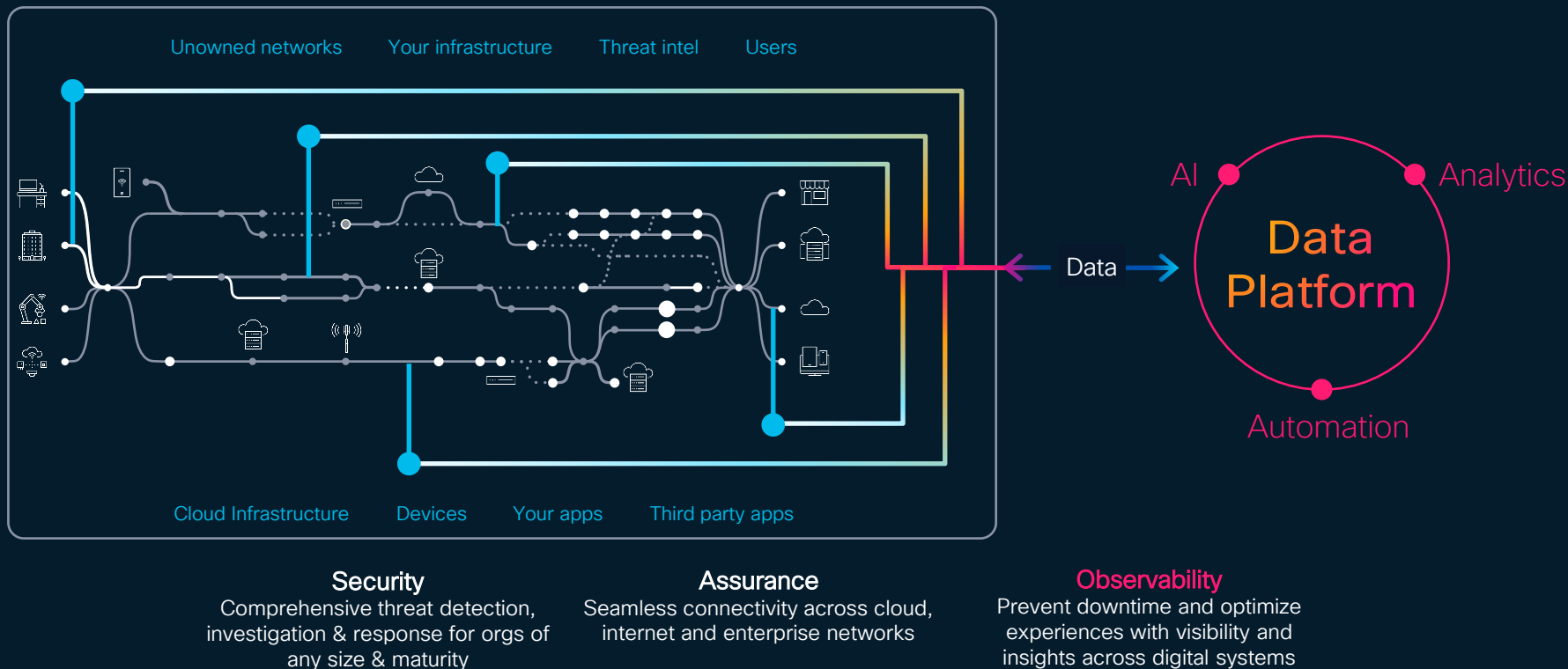
Agenda

- Splunk Observability with AppDynamics
- Intro to AppDynamics
- New Innovations across AppDynamics
 - Optimize Hybrid App Performance
 - Optimize End-User Experiences
 - Detect and Prioritize App Security Vulnerabilities

Observability requires that actionable data from multiple sources is appropriately connected, optimized and enhanced for context.

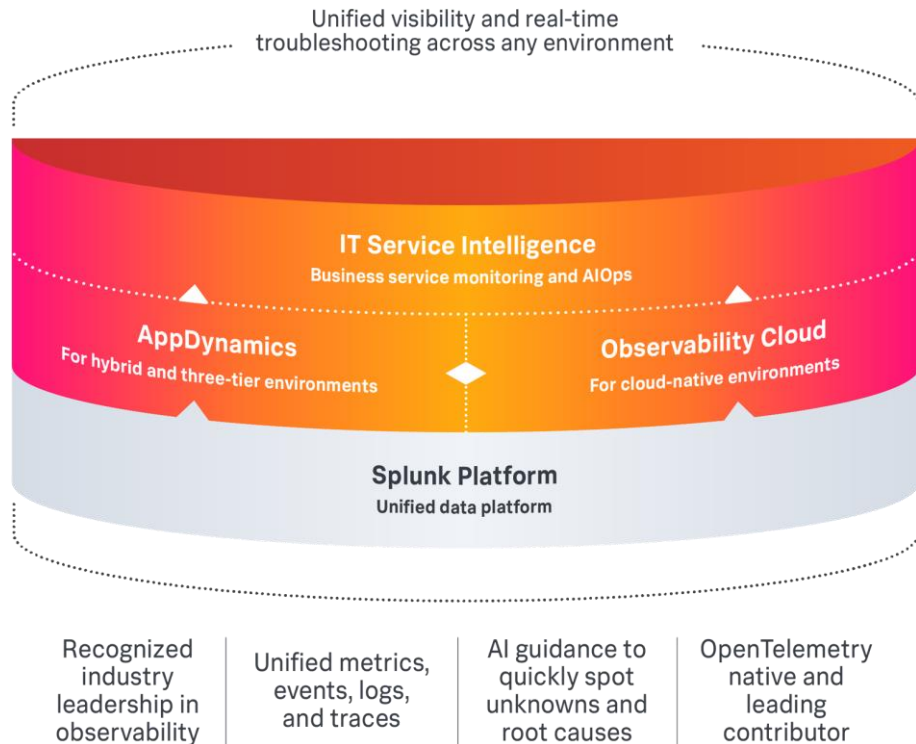
– Gartner

Splunk and Cisco unify data across your environment to drive digital resilience



Our Vision for Splunk Observability

- Complete visibility across your digital footprint
- Earlier detection & faster investigation of business-impacting issues
- Better control of your data and costs



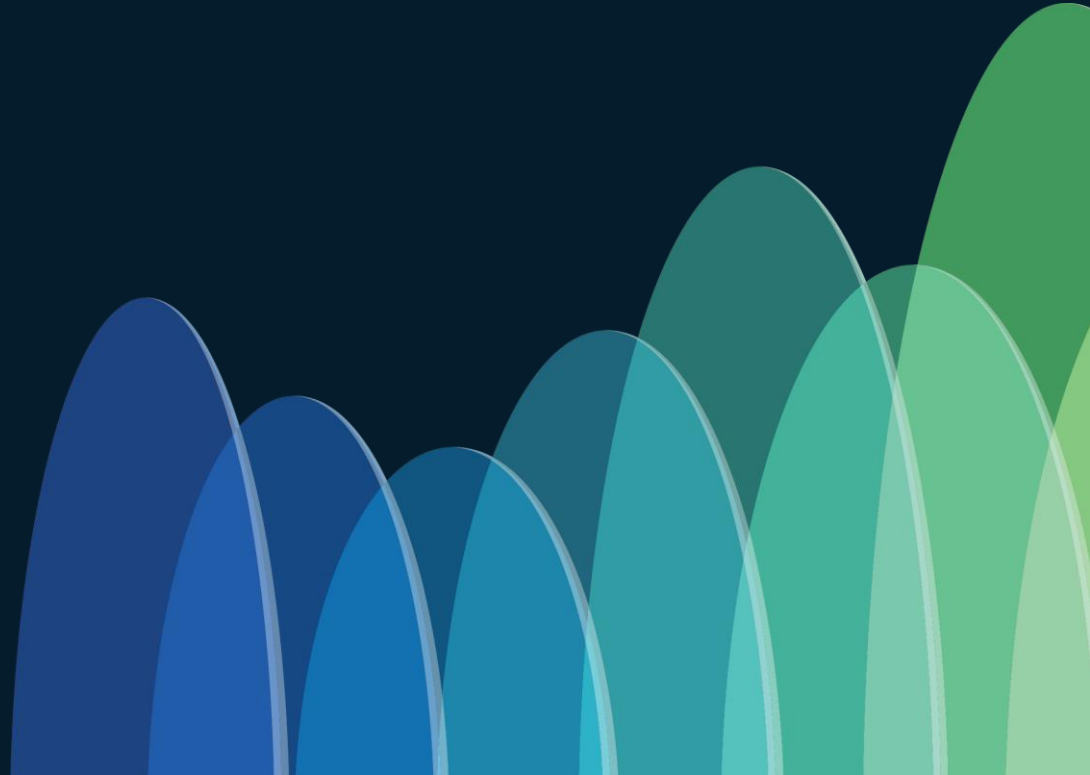
Bringing Teams Together

Eliminate tool silos by using a single platform to unify teams, ensuring everyone works from the same data and streamlining cross-application issue resolution.

Build a leading observability practice



What is Splunk AppDynamics?



Splunk AppDynamics

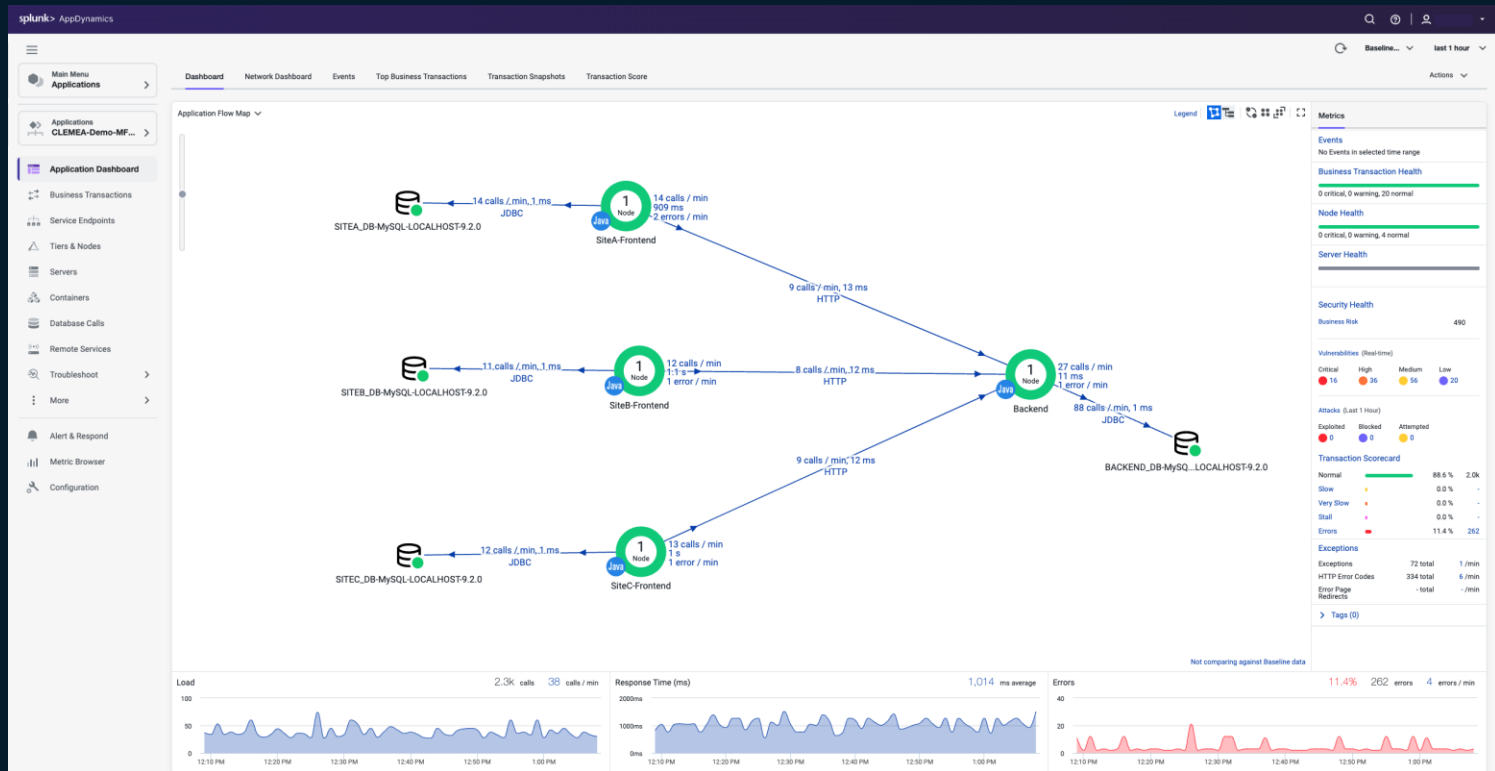
Unified observability that delivers end-to-end visibility of three-tier and monolithic applications, enabling rapid issue resolution and business-focused insights.



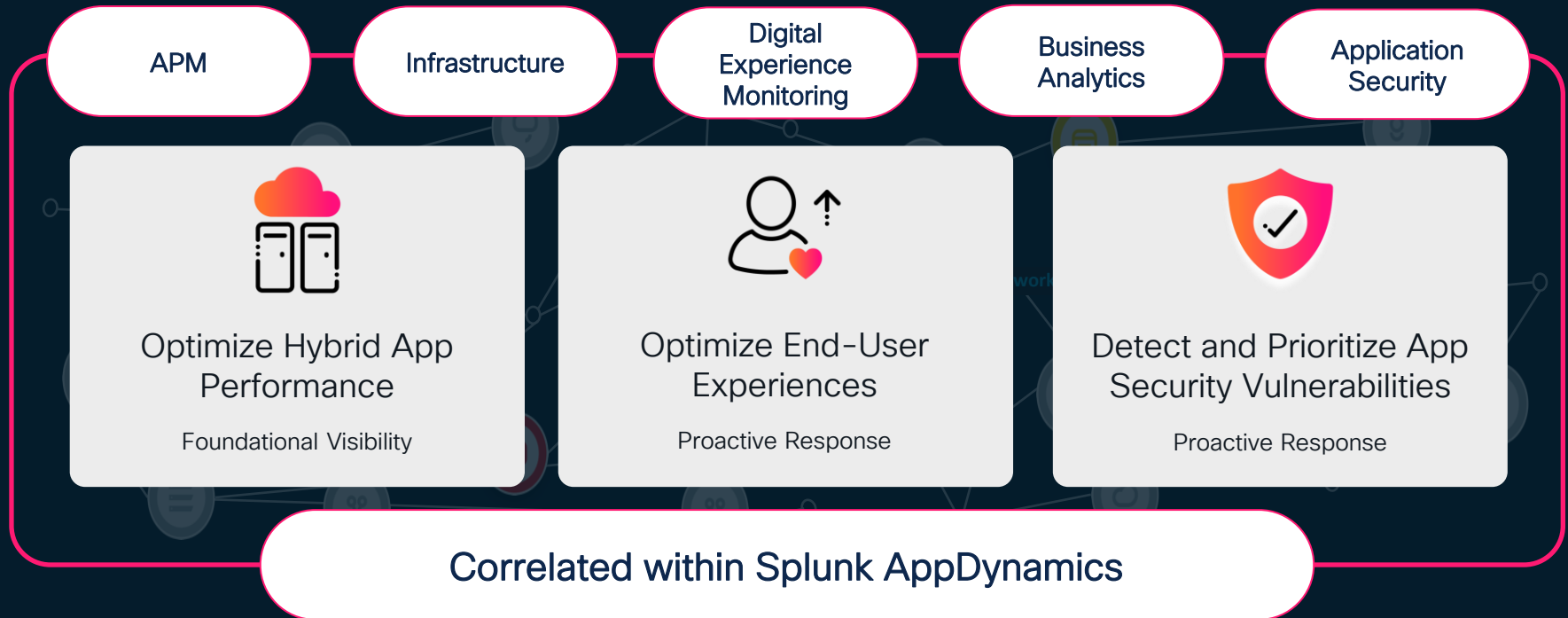
See the **business impact** of every problem

UI refresh

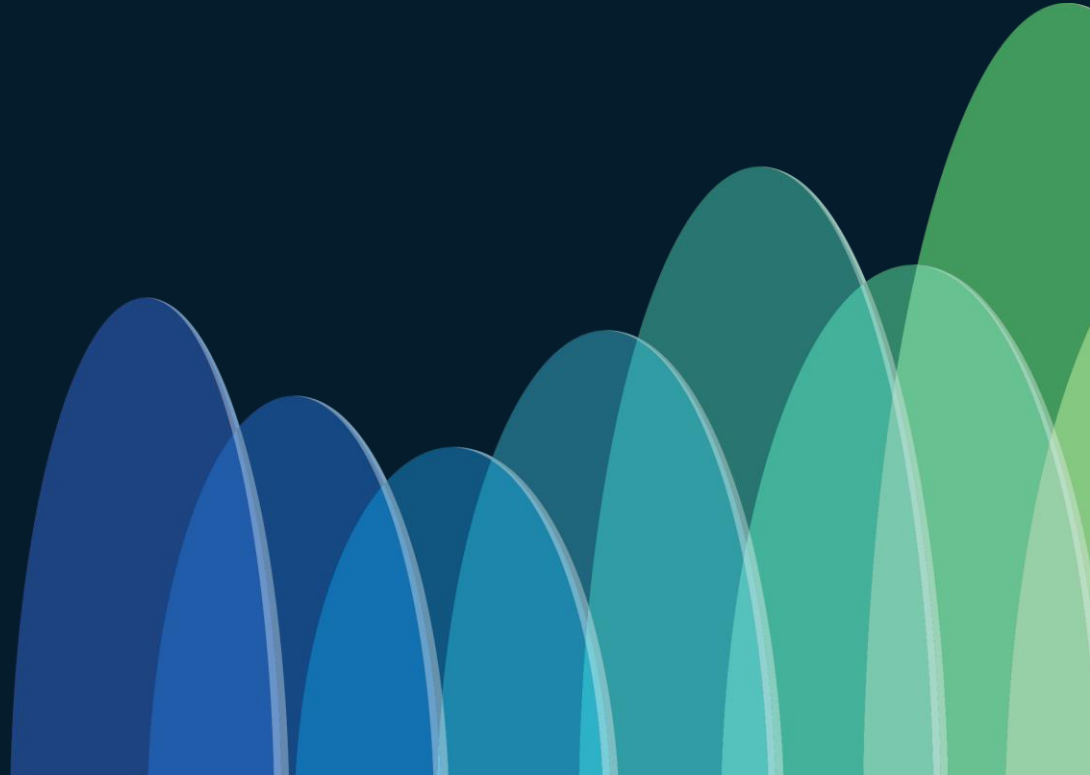
New!



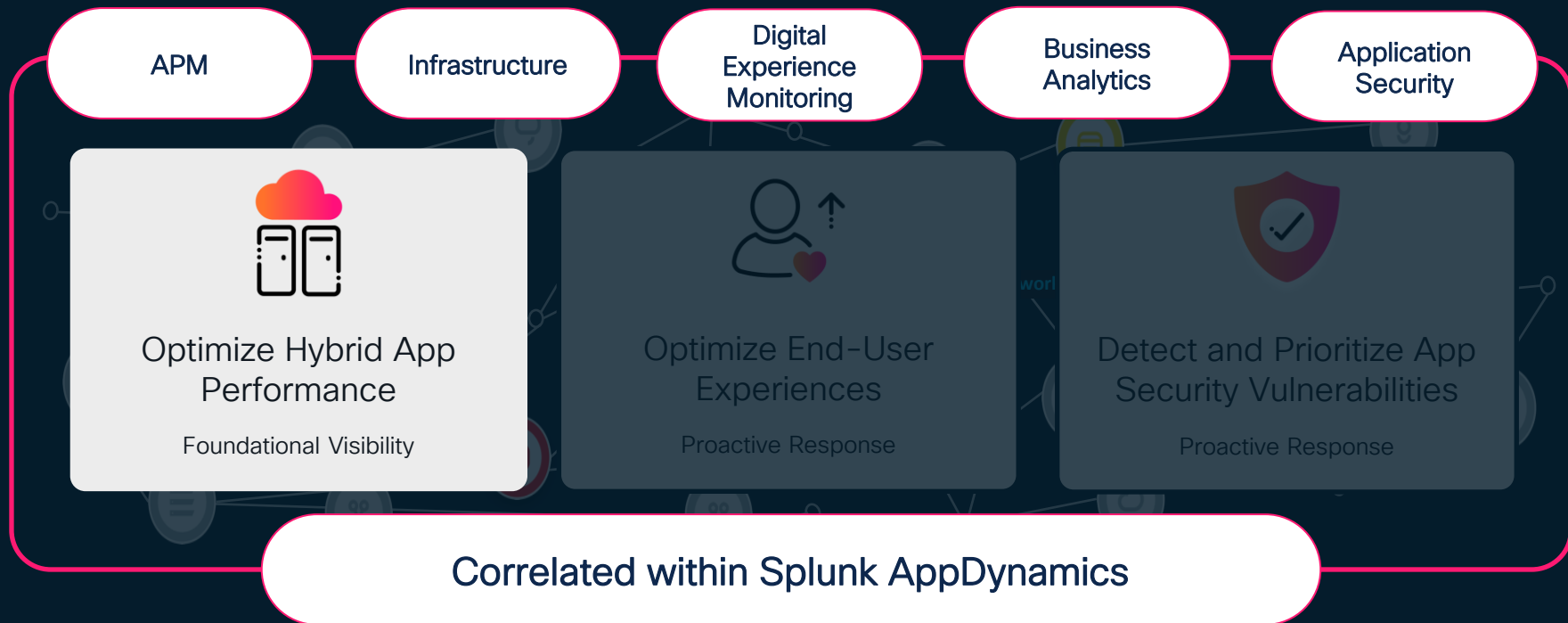
AppDynamics powers full-stack observability



What's new in AppDynamics



New innovation: Optimize Hybrid App Performance



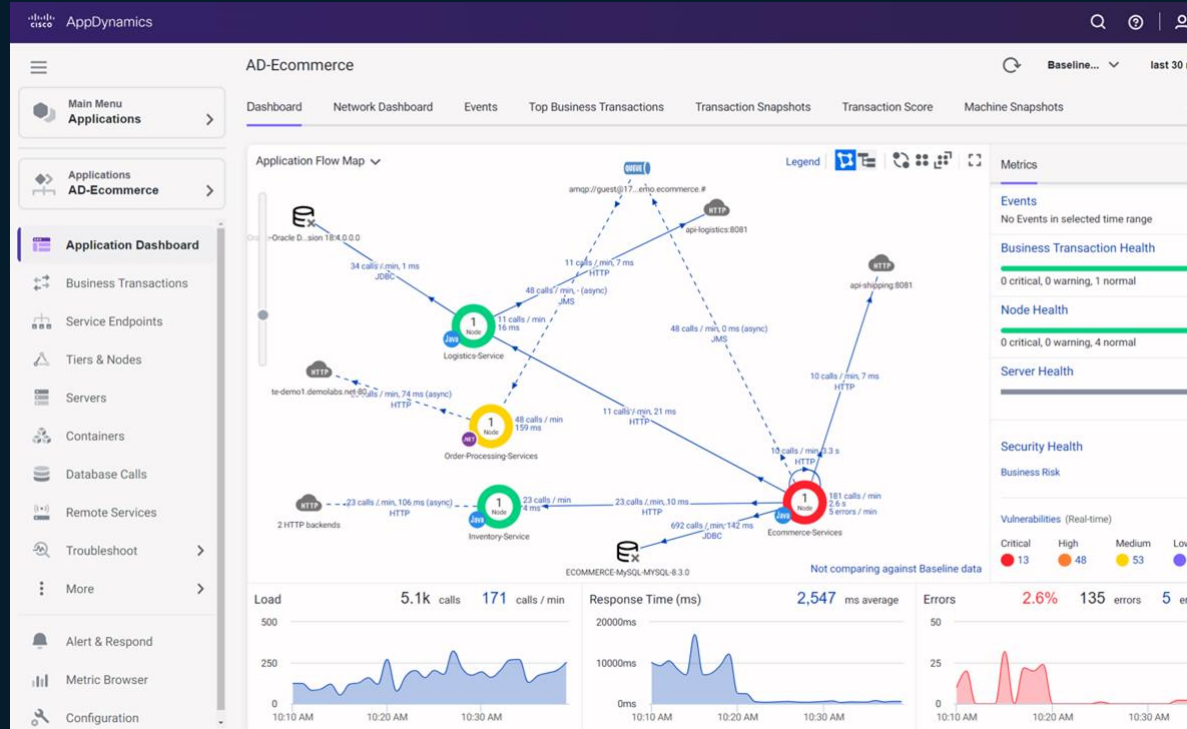
Optimize hybrid app performance

Automatically discover and map application dependencies.

Visualize and analyze application performance.

Trace and diagnose key business transactions.

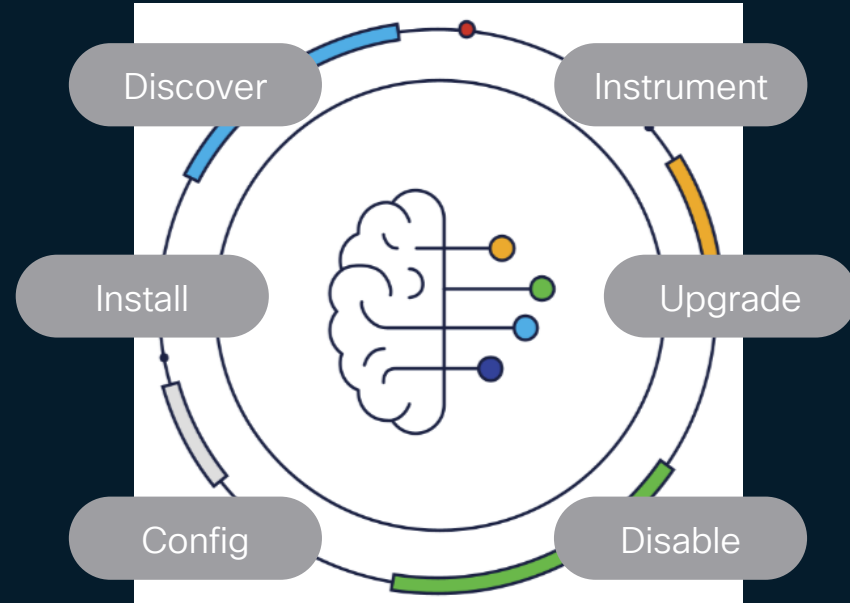
Seamless navigation between monitoring modes, maintaining context, and correlating data.



Smart Agent

Your intelligent agent management assistant

- Orchestrate agent install, config and upgrades to **make routine maintenance simpler and faster**
- **Automate agent lifecycle** to maintain compliance
- **Simplify onboarding** with a single Smart Agent installation



Smart Agent Auto Discovery

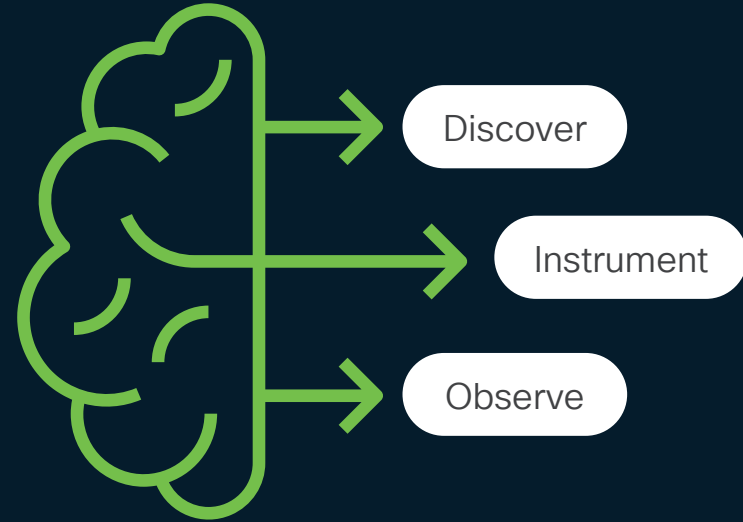
New!

Take the guesswork out of deploying and managing your agent fleet

Smart Agent : will intelligently instrument everything you care about in one step

Auto Discovery: will scan your host and discover all the processes running, determine which specific agents are appropriate, and then install only the agents you need.

Profiles : allow you to specify what sorts of applications and infrastructure you want to instrument



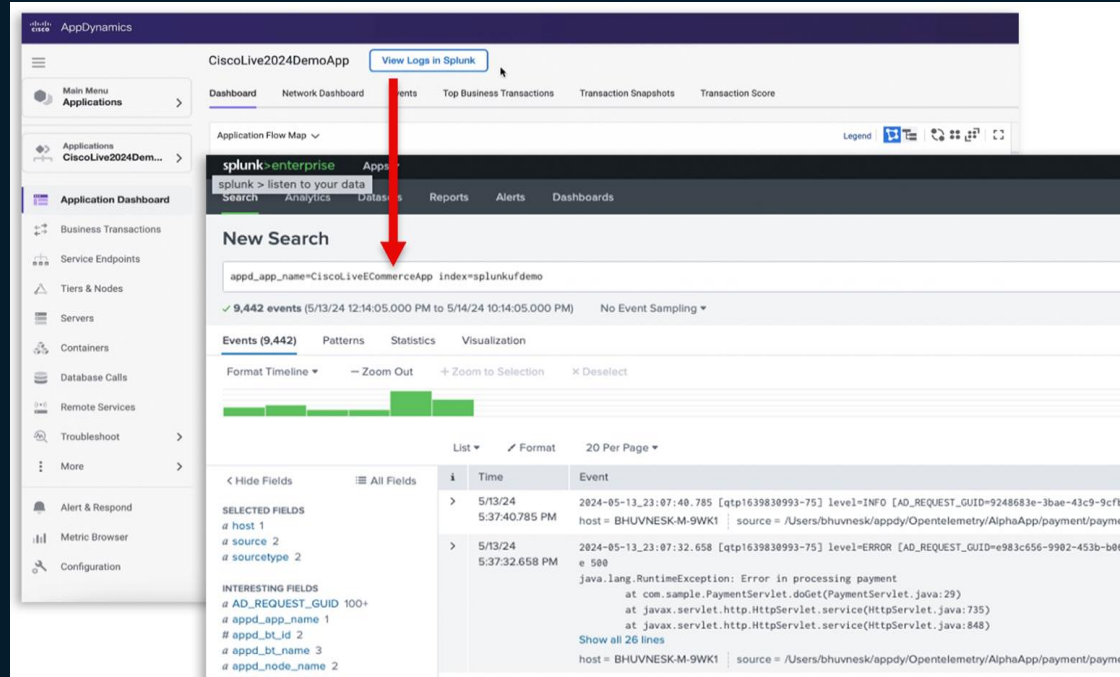
Install Smart Agent everywhere and start collecting data in minutes!

Log Observer Connect

New!

Log Observer Connect combines AppDynamics APM with Splunk log analytics, enabling fast log correlation with application metrics for streamlined troubleshooting.

By enriching logs with AppDynamics metadata, it centralizes observability, reduces tool sprawl, and avoids data duplication for greater efficiency.



The screenshot displays the Splunk interface for a search query. The search bar contains the query: `appd_app_name=CiscoLiveECommerceApp index=splunkdemo`. The results show 9,442 events. The interface includes a sidebar with navigation options like Main Menu, Applications, and Application Dashboard. The top navigation bar shows the AppDynamics logo and a 'View Logs in Splunk' button, which is highlighted by a red arrow. The search results are displayed in a table with columns for Time and Event.

| Time | Event |
|------------------------|--|
| 5/13/24 5:37:40.785 PM | 2024-05-13_23:07:40.785 [qtp1639830993-75] level=INFO [AD_REQUEST_GUID=9248683e-3bae-43c9-9cfc-... host = BHUVNESK-M-9WK1 source = /Users/bhuvnesk/appdy/Opentelemetry/AlphaApp/payment/payme... |
| 5/13/24 5:37:32.658 PM | 2024-05-13_23:07:32.658 [qtp1639830993-75] level=ERROR [AD_REQUEST_GUID=e983c656-9902-e453b-b08e-500e 500 java.lang.RuntimeException: Error in processing payment at com.sample.PaymentServlet.doGet(PaymentServlet.java:29) at javax.servlet.http.HttpServlet.service(HttpServlet.java:735) at javax.servlet.http.HttpServlet.service(HttpServlet.java:848) Show all 26 lines host = BHUVNESK-M-9WK1 source = /Users/bhuvnesk/appdy/Opentelemetry/AlphaApp/payment/payme... |

Now available on Splunk Cloud Platform and Splunk Enterprise

AppDynamics + IT Service Intelligence integration

New!

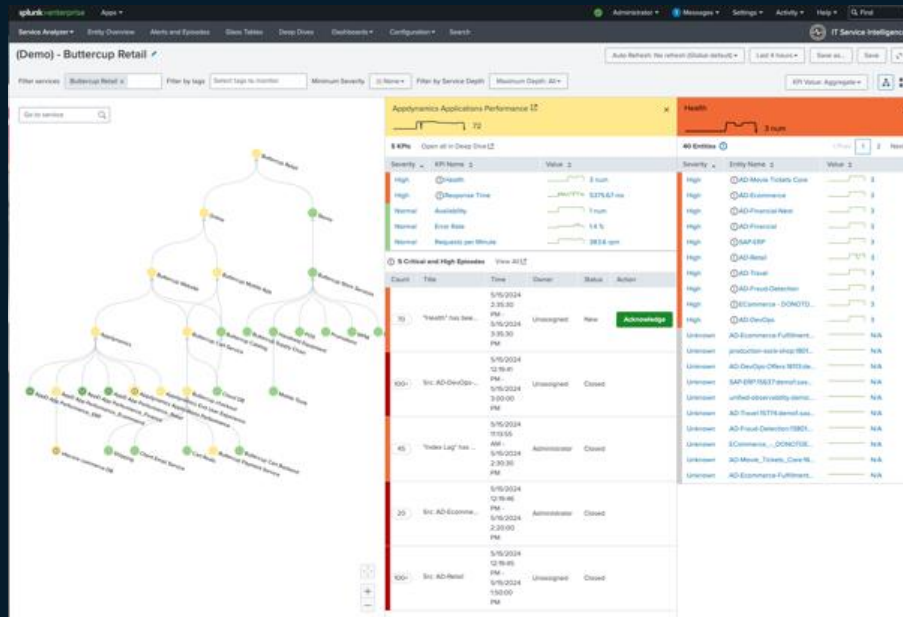
Reduce alert noise & get end-to-end visibility of on-prem, hybrid, and cloud applications correlated with business KPIs

NEAR TERM:

- Integrate events from AppDynamics into ITSI's event intelligence to reduce alert noise
- Bring application performance & business metrics from AppDynamics into ITSI service monitoring to enable and accelerate troubleshooting across hybrid and cloud applications

LONGER TERM:

- Centralize visibility and event intelligence across Cisco solutions (ThousandEyes, Catalyst, Meraki, etc.)



AppDynamics self-managed

New!

Deploy AppDynamics Virtual Appliance in private and public clouds

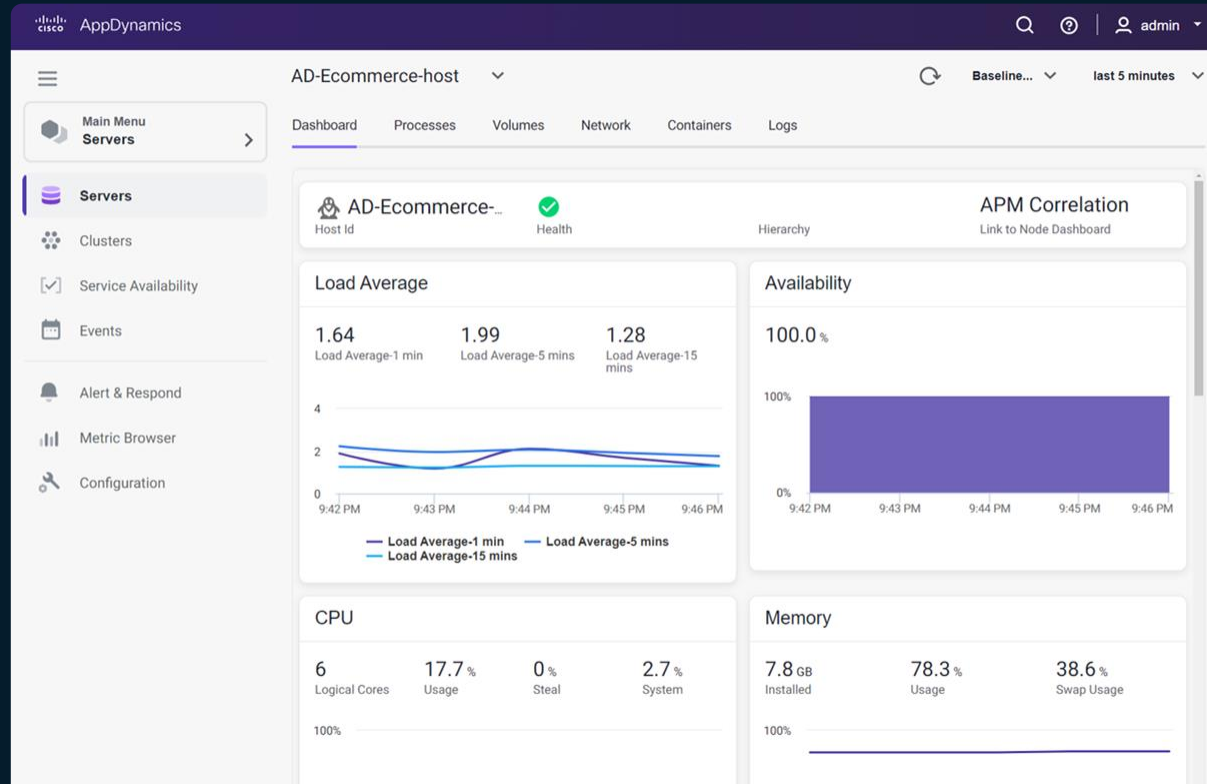


Infrastructure Visibility

Comprehensive monitoring of application deployment servers and their metrics and logs.

Maintain **tight integration with the monitored application** for a unified view.

***Including Kubernetes cluster monitoring*



Anomaly Detection for infrastructure

Detect issues faster with embedded AI/ML

New!

Available on AppDynamics
SaaS and Self-hosted

- **No config required:** Automatically enable AD on servers associated with the selected application
- **Automatically detects and alerts:** on memory and CPU issues in the infrastructure
- **Tunable AI:** Select appropriate model sensitivity to meet your business needs

Configure Anomaly Detection - eCommerce App

☒ Monitor Business Transactions

☒ Monitor Server

Specify Business Transactions to Monitor ⓘ

All Business Transactions in the Application

Specify Servers to Monitor ⓘ

All Servers

Select Severity Level(s) ⓘ

All Severities

Detection Sensitivity

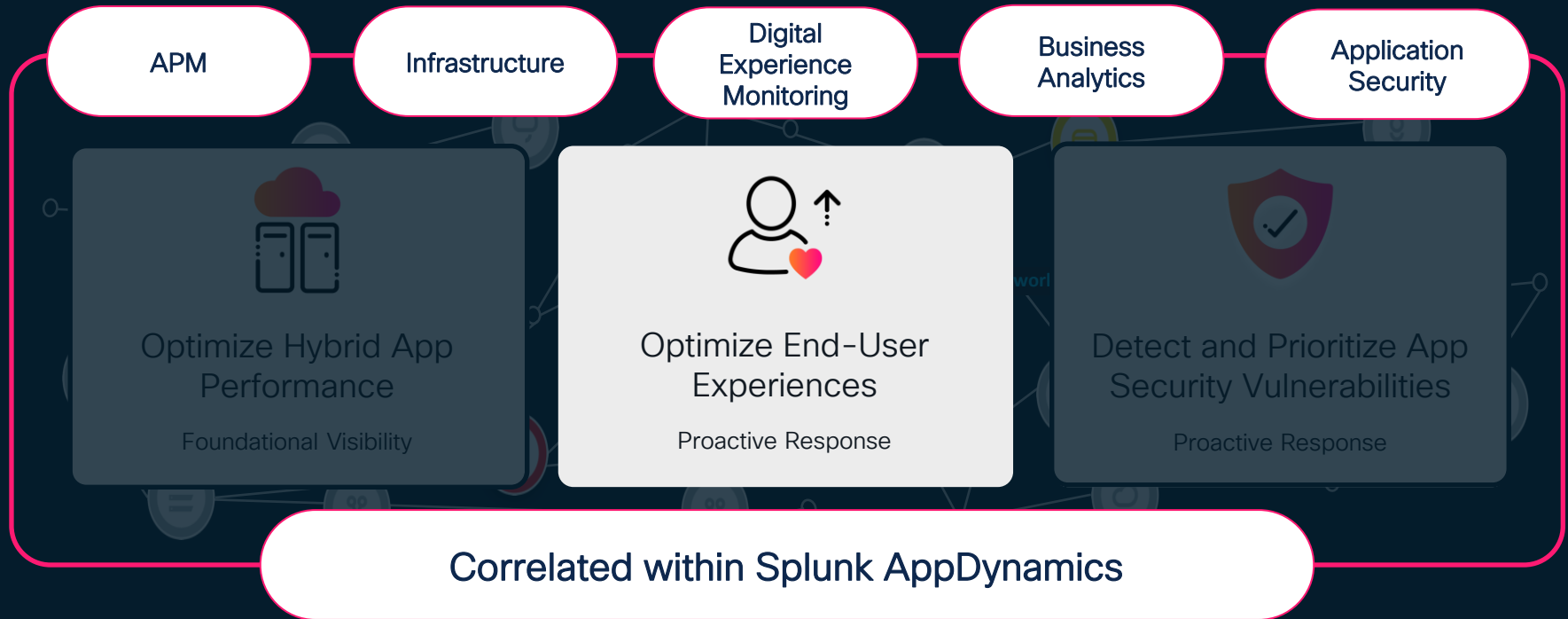
The more sensitive the detection is, the more anomalies will be detected, and less accurate they will be.

Sensitivity: High

Sensitivity: Medium (Default)

Sensitivity: Low

New innovation: Optimize End-User Experiences



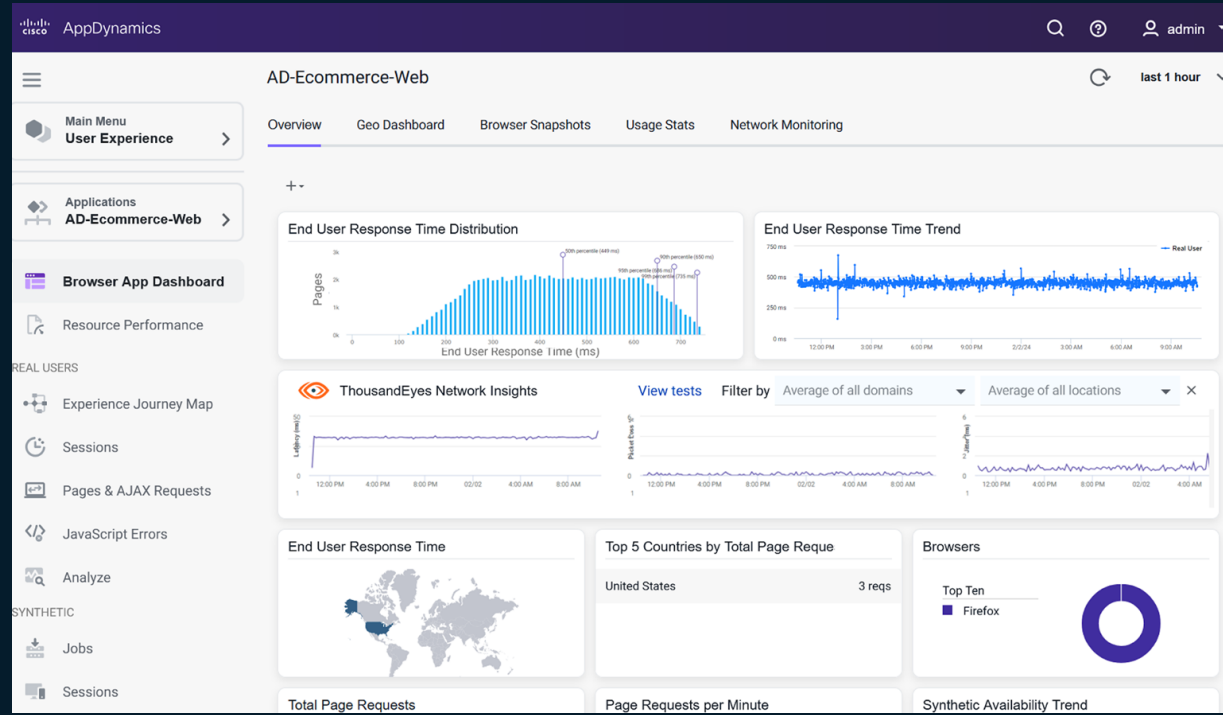
Optimize End-User Experiences

Measure and track real user experiences across devices.

Proactively identify and resolve user experience issues.

Analyze user journey and behavior patterns in real time.

Correlate user experience with application performance and business outcomes



The Browser App Dashboard tracks real-time user experiences

MRUM: Session Replay



Play back and observe the end user experience on the mobile application

Optimize the user experience by analyzing the end user interaction on the mobile application

Troubleshoot the issue faster by identifying the user actions and events before the crashes, ANR and other errors

Session replay is supported in both Android and IOS native agents

Session - 05/14/24 12:33:14 PM to 05/14/24 12:33:55 PM

Session Summary

| Session Duration | IP Address | Platform | OS Version | Agent Version | Mobile App Version | Connection Type | Carrier | Device | Region | Country |
|------------------|------------|----------|------------|---------------|--------------------|-----------------|---------|-----------------|-----------|--------------|
| 40.234 sec | - | iOS | 16.5 | - | 2.0 | Wi-Fi | TIM | Apple Iphone 14 | Cape Town | South Africa |

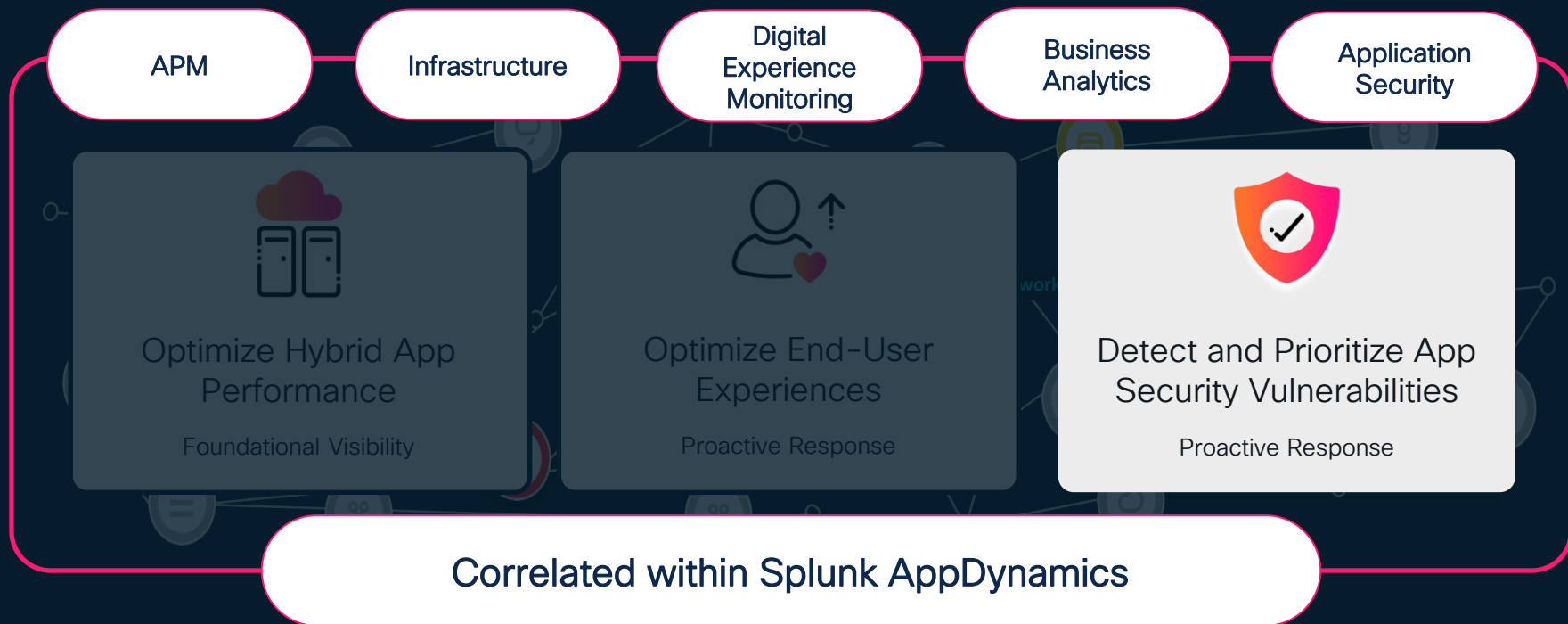
[Show More](#)

Session Replay

03:18 / 03:36

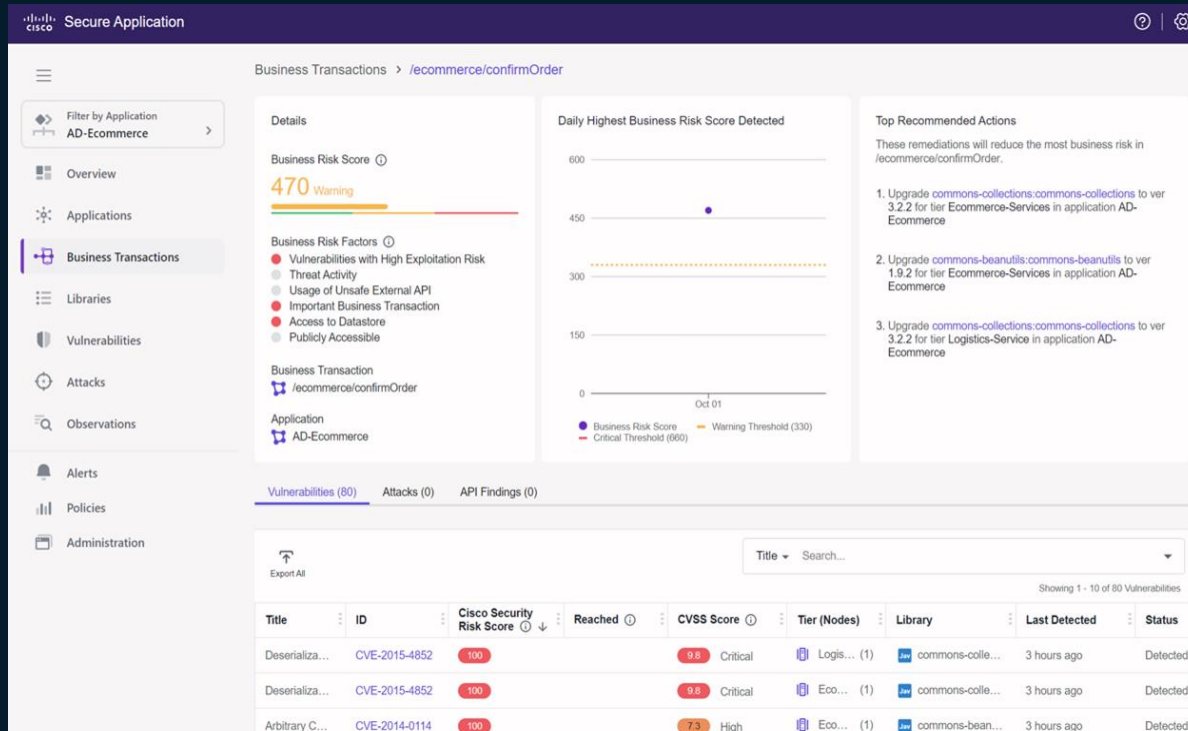
◀ 5s 1x speed Video Wireframe

New innovation: Detect and Prioritize App Security Vulnerabilities



Detect and Prioritize App Security Vulnerabilities

- Identify and assess security risks in real-time.
- Prioritize vulnerabilities based on business impact.
- Correlate security threats with application performance.
- Automate remediation recommendations to reduce risk



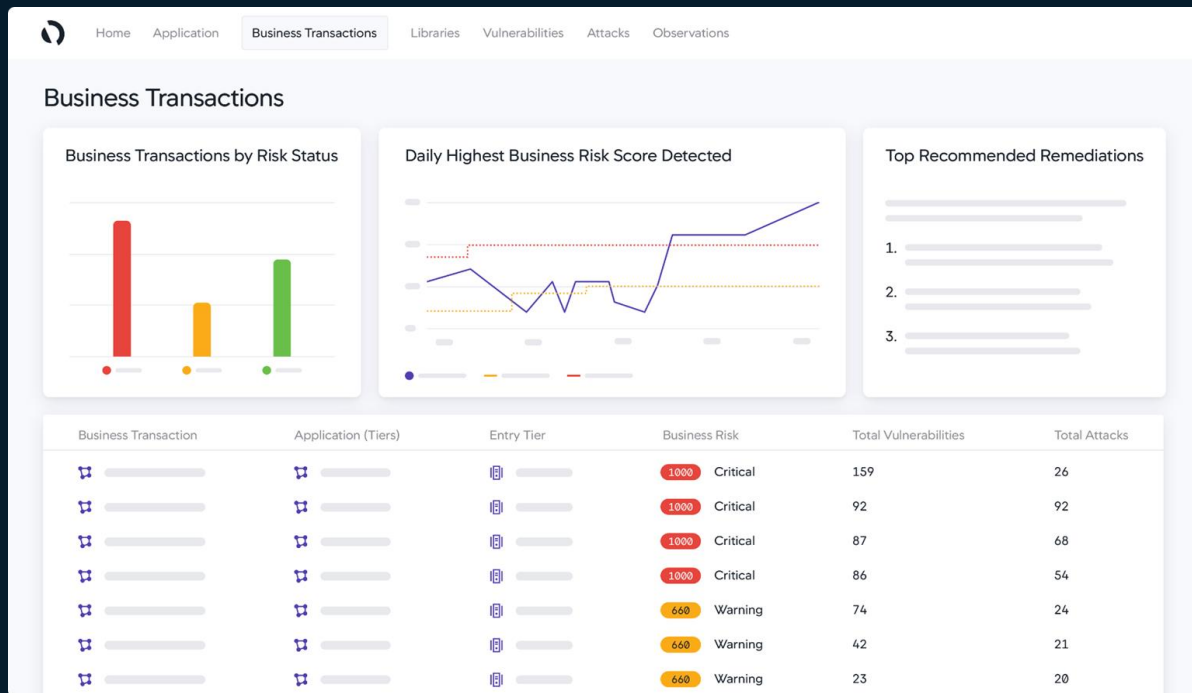
Correlate vulnerabilities with business transactions to prioritize risks impacting critical functions.

Business risk scoring for AppDynamics Virtual Appliance

New!

Prioritize security response by business impact with an **automated risk score** that combines application context and real-time security intelligence.

Quickly identify where attacks may occur in critical workflows, understand potential revenue impact, and focus on protecting high-risk areas to minimize threats proactively.



Secure Application Integrated with Splunk Enterprise Security

New!

- Enhanced application attack troubleshooting in Splunk Enterprise Security based on attack telemetry from Secure Application mapped to Security Analyst workflow
- Simplified integration using HEC and Secure Application HTTP endpoint.
- Better-Together solution focused on bringing application and security teams together.

The screenshot displays the Splunk Enterprise Security interface. The top navigation bar includes 'Apps', 'Messages', 'Settings', 'Activity', and 'Find'. Below this, the 'Analyst queue' section shows a search filter 'source="Threat - Cisco Secu' and a time range of 'Last 7 days'. A green arrow points to the 'Zoom In' button. The 'Findings and investigations' table lists several findings related to 'EXPLOITED LOG4J attack' on 'Application AD-Ecommerce'. The right sidebar shows the 'Cisco Secure Application' details for a specific event, including timestamp, affected node, event trigger, vulnerabilities, entry point, client IP, socket address, network flow, judgement, classname, socket out, method name, api server external, and stack trace.

| Findings and investigations | ID | Type | Entity |
|---|----|---------|--------|
| Application AD-Ecommerce was seen with a EXPLOITED LOG4J attack | | FINDING | AD-E |
| Application AD-Ecommerce was seen with a EXPLOITED LOG4J attack | | FINDING | AD-E |
| Application AD-Ecommerce was seen with a EXPLOITED LOG4J attack | | FINDING | AD-E |
| Application AD-Ecommerce was seen with a EXPLOITED LOG4J attack | | FINDING | AD-E |
| Application AD-Ecommerce was seen with a EXPLOITED LOG4J attack | | FINDING | AD-E |

| Cisco Secure Application | |
|--------------------------|---|
| Timestamp: | 05-02-2022 09:30:45 EDT |
| Affected Node: | node-20 |
| Event Trigger: | 178.175.1.244 |
| Vulnerabilities: | SOCKET_RESOLVE |
| Entry Point: | https://localhost:8088/app/ |
| Client IP: | 127.0.0.1 |
| Socket Address: | 178.175.1.244 |
| Network Flow: | 127.0.0.1:40758 -> 127.0.0.1:40758 |
| Judgement: | Suspicious [Talos] |
| Classname: | java.net.SocketPermission |
| Socket Out: | 178.175.1.244:443 |
| Method Name: | sun.net.www.http.HttpClient |
| Api Server External: | true |
| Stack Trace: | java.lang.SecurityManager 1051) sun.net.www.http.HttpClient |

Webex App

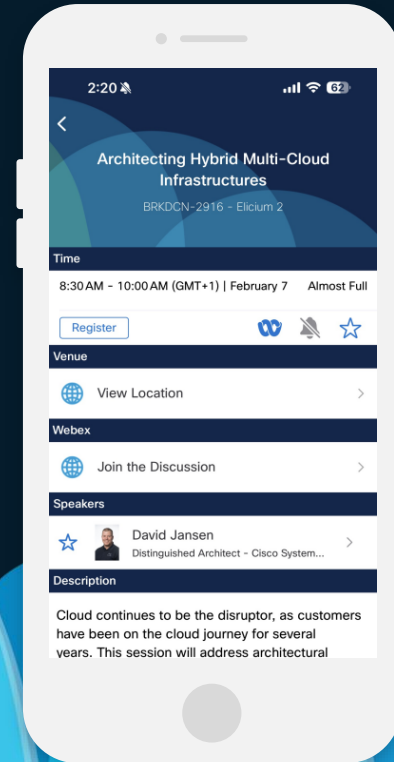
Questions?

Use the Webex app to chat with the speaker after the session

How

- 1 Find this session in the Cisco Events mobile app
- 2 Click “Join the Discussion”
- 3 Install the Webex app or go directly to the Webex space
- 4 Enter messages/questions in the Webex space

Webex spaces will be moderated by the speaker until February 28, 2025.



Fill Out Your Session Surveys



Participants who fill out a minimum of 4 session surveys and the overall event survey will get a unique Cisco Live t-shirt.

(from 11:30 on Thursday, while supplies last)



All surveys can be taken in the Cisco Events mobile app or by logging in to the Session Catalog and clicking the 'Participant Dashboard'



Content Catalog

Continue your education



- Visit the Cisco Showcase for related demos
- Book your one-on-one Meet the Engineer meeting
- Attend the interactive education with DevNet, Capture the Flag, and Walk-in Labs
- Visit the On-Demand Library for more sessions at ciscolive.com/on-demand. Sessions from this event will be available from March 3.



Thank you



CISCO *Live!*

GO BEYOND

The background of the slide features a series of overlapping, teardrop-shaped elements in various shades of blue, ranging from light sky blue to deep navy blue. These shapes are arranged in a way that creates a sense of depth and movement, resembling a stylized mountain range or a series of waves. The overall aesthetic is clean and modern.