

Unifying Operations with Cisco Cloud Control and AI Canvas

Robert Barton
Distinguished Engineer



Webex App

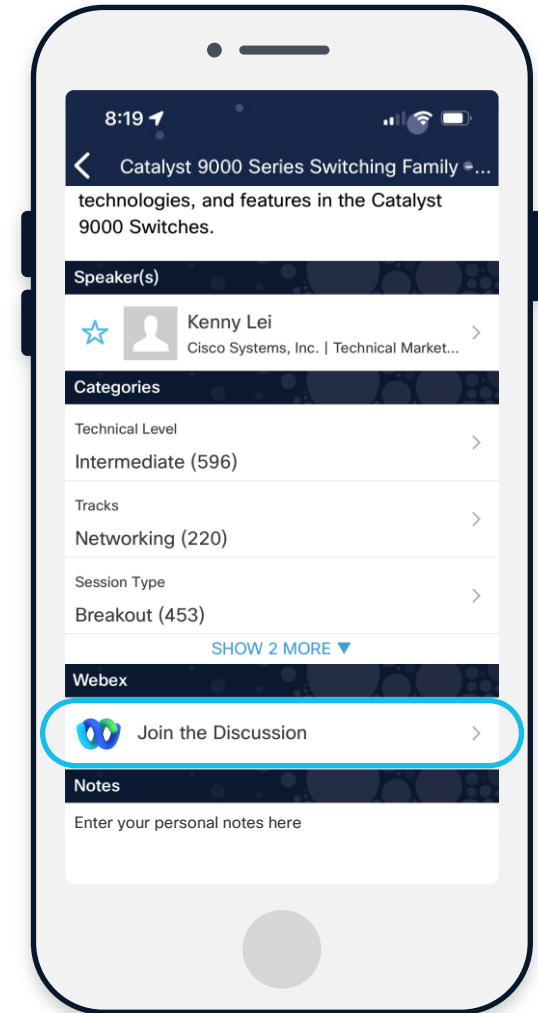
Questions?

Use Webex app to chat with the speaker after the session

How

- 1 Find this session in the Cisco Events app
- 2 Click “Join the Discussion”
- 3 Install the Webex app or go directly to the Webex space
- 4 Enter messages/questions in the Webex space

Webex spaces will be moderated by the speaker until February 27, 2026.



Agentic Operations and the Deep Network Model

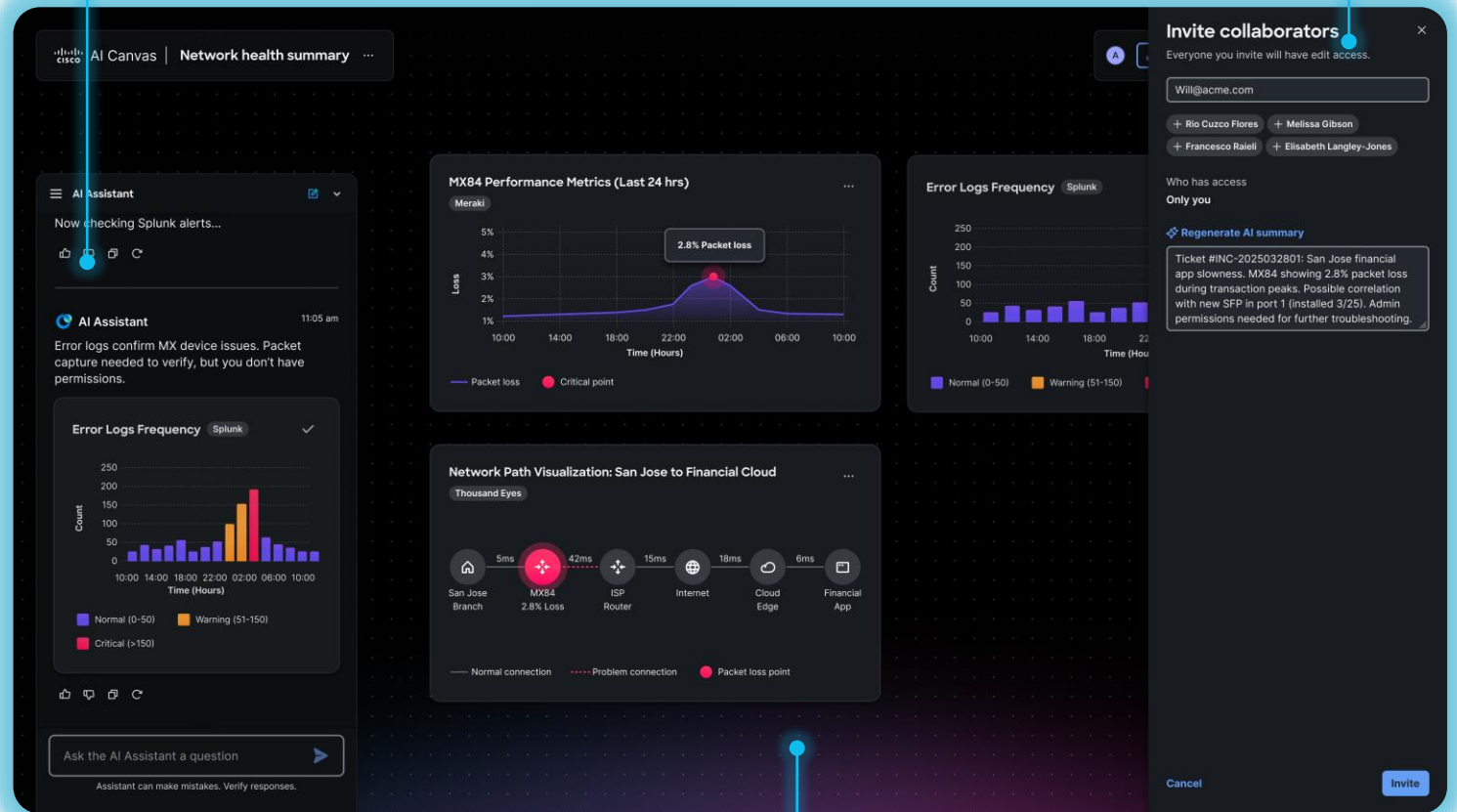
Cisco AI Canvas

A reimagined user interface for human/agent interaction

- Collaboration across multiple users (NetOps, SecOps and execs)
- Built on the intelligence of the Deep Network Model
- Troubleshooting and execution across multiple domains

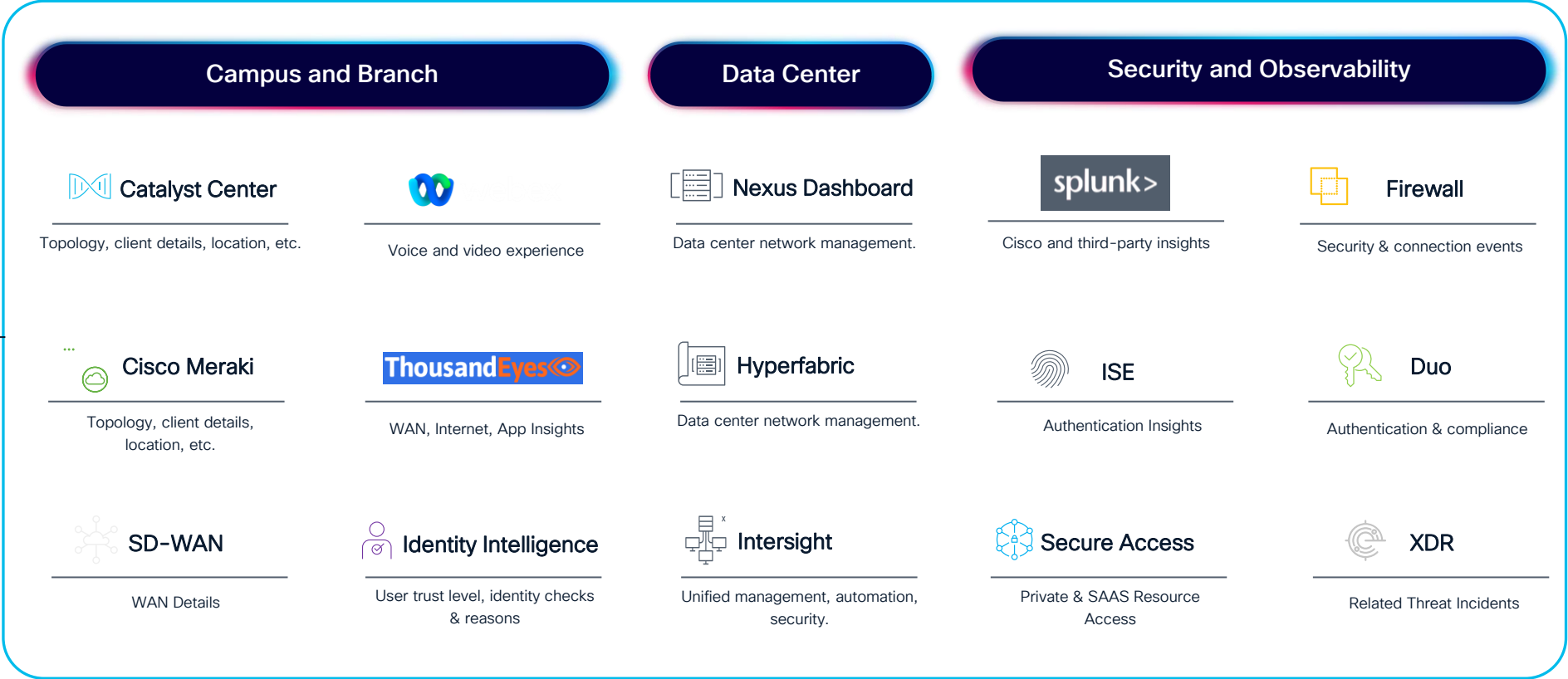
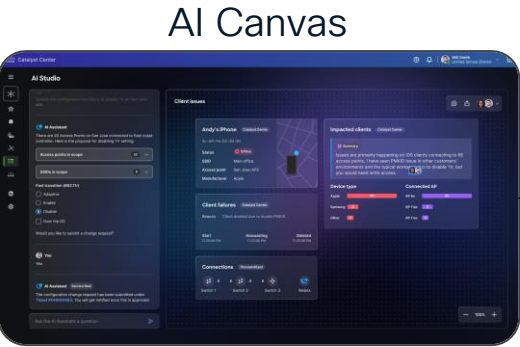
AI Assistant

Users



Shared Workspace

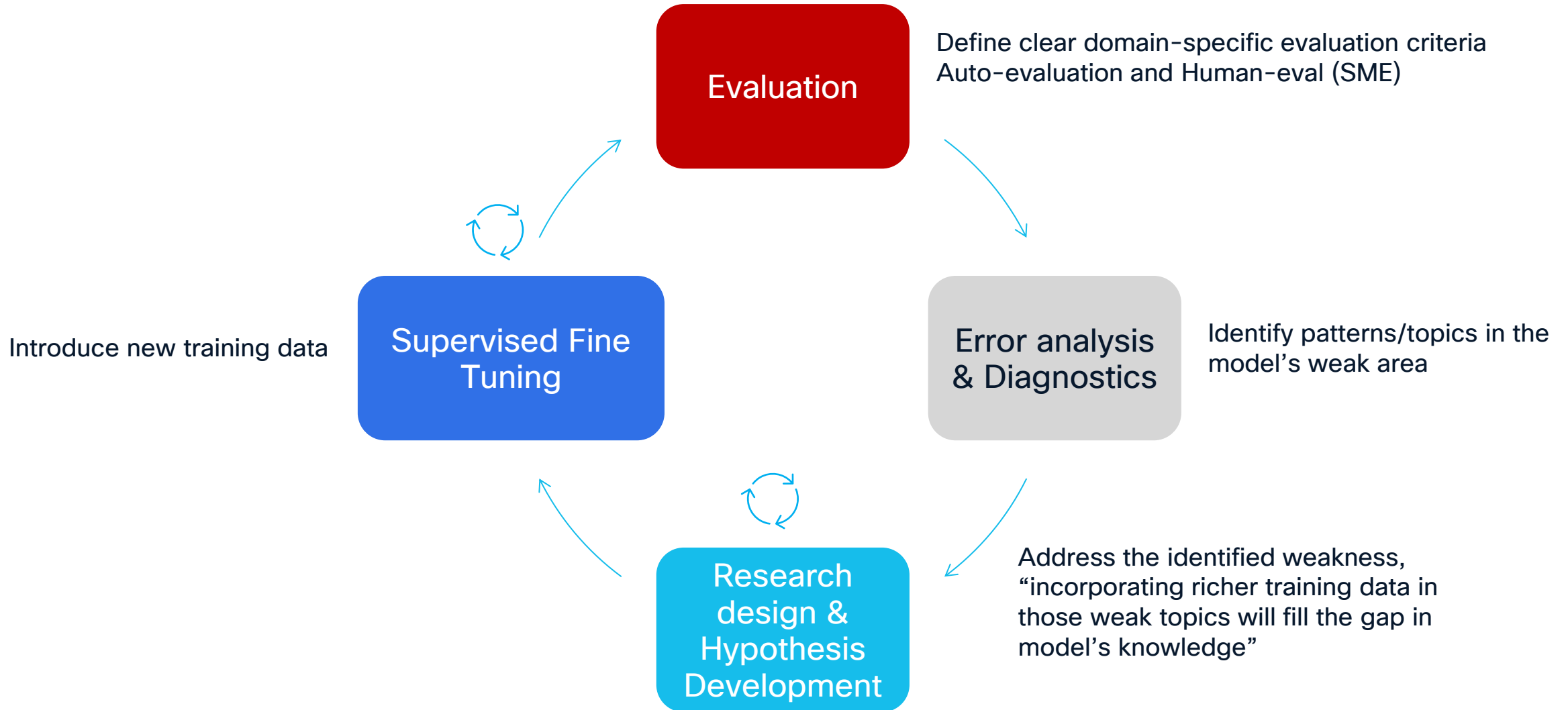
AI Canvas + AgenticOps Across IT



Cisco's Deep Network Model

- Built upon an existing foundation model
- Various models are being used, and this will change over time
- Decision criteria is:
 - Foundation benchmark performance
 - Tunability
 - Model size (bigger isn't always better)

Deep Network Model Fine-Tuning Process

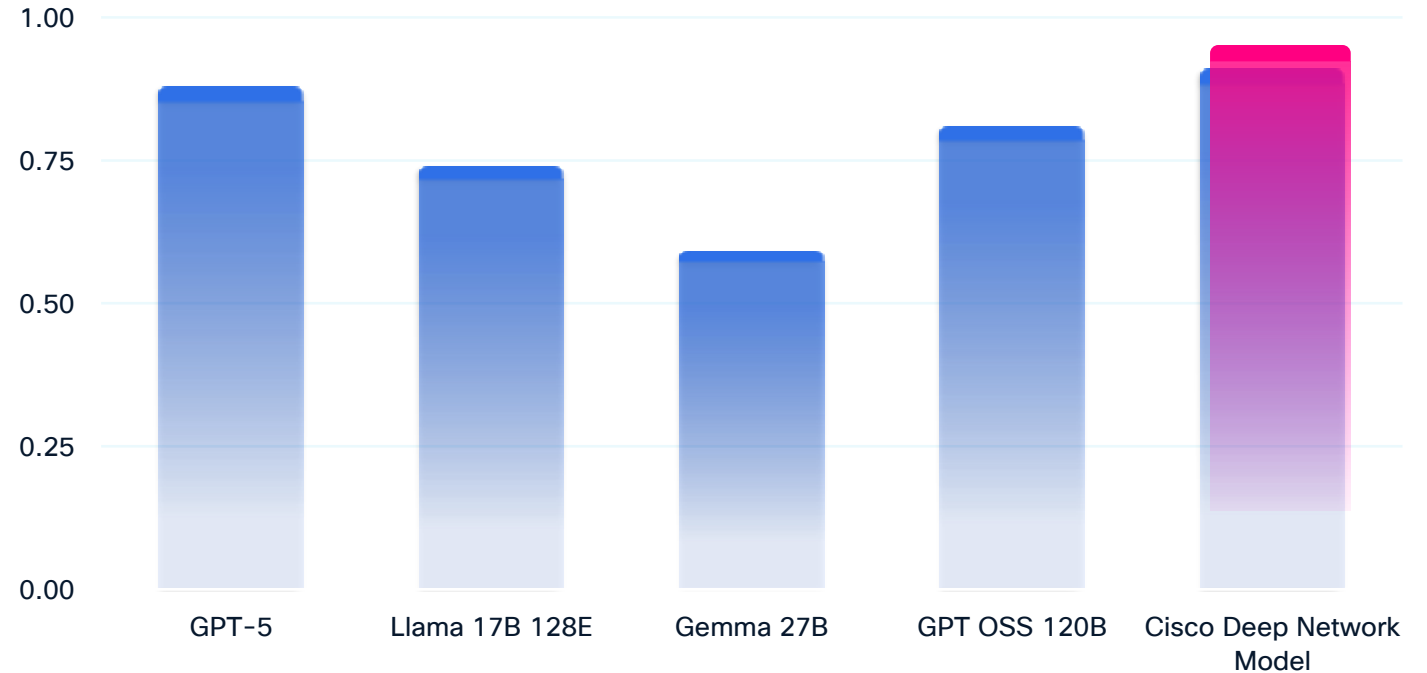


Cisco's Deep Network Model

Purpose-built for networking, expert accuracy

- More precise reasoning for troubleshooting, configuration, and automation
- Fine-tuned on 40+ years of expertise and expert-vetted for accuracy
- Evolves with live telemetry and real-world Cisco TAC and CX insights

Outperforms general-purpose models by ~20%

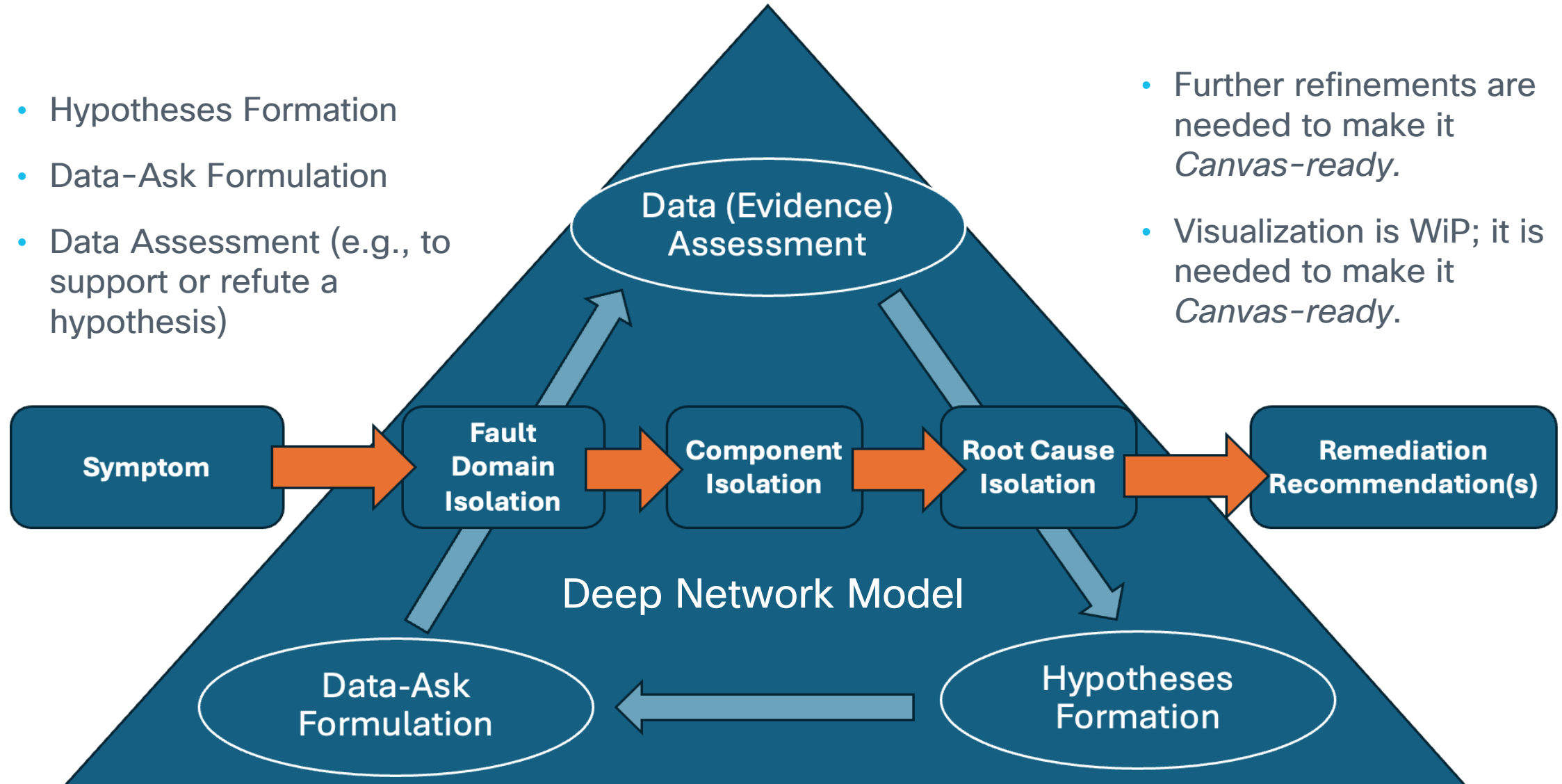


Benchmark Based on CCIE-style multiple choice questions benchmark, October 2025

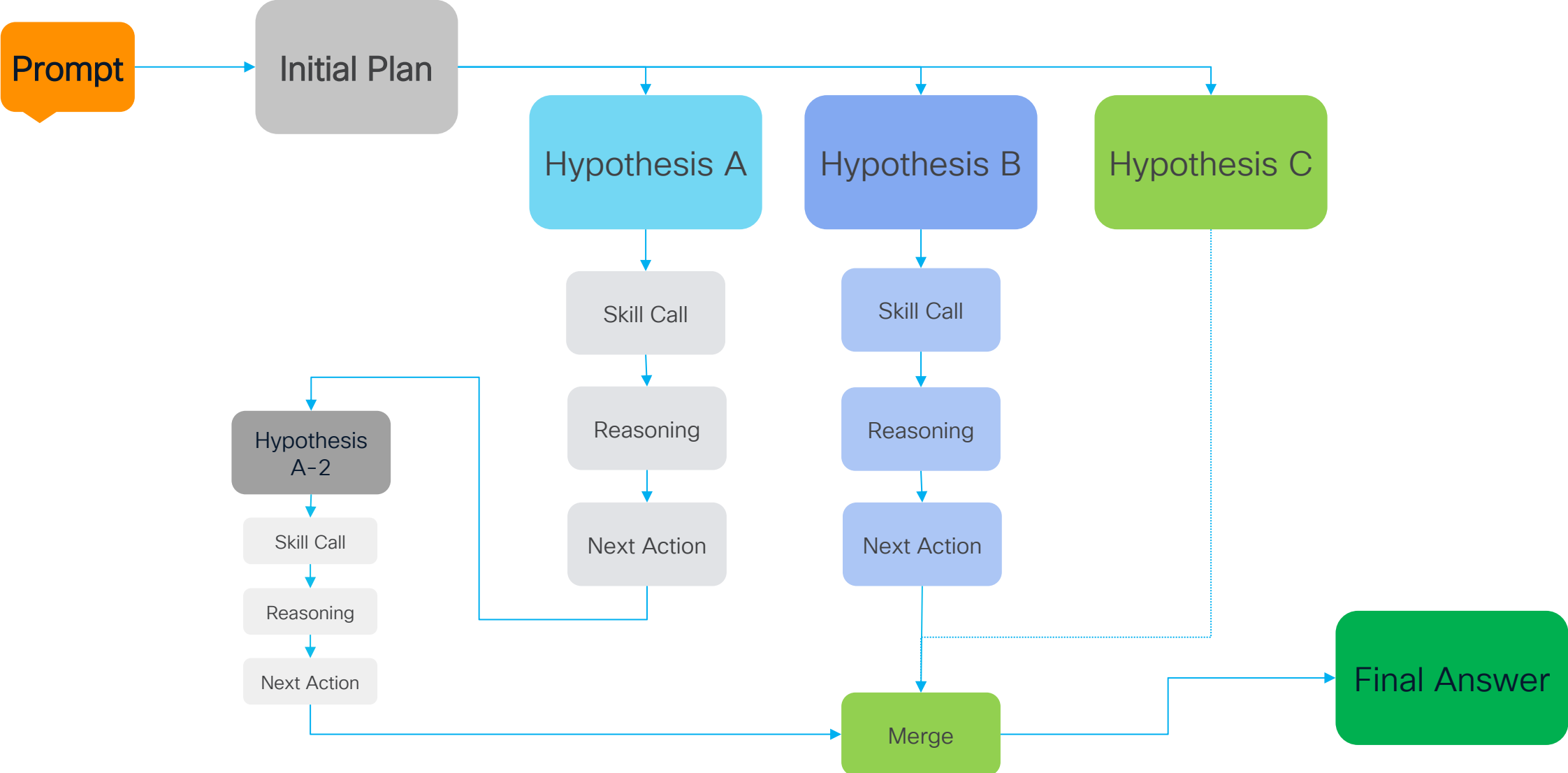
Example: Dynamic Troubleshooting Agent (DTA)

- Hypotheses Formation
- Data-Ask Formulation
- Data Assessment (e.g., to support or refute a hypothesis)

- Further refinements are needed to make it *Canvas-ready*.
- Visualization is WiP; it is needed to make it *Canvas-ready*.

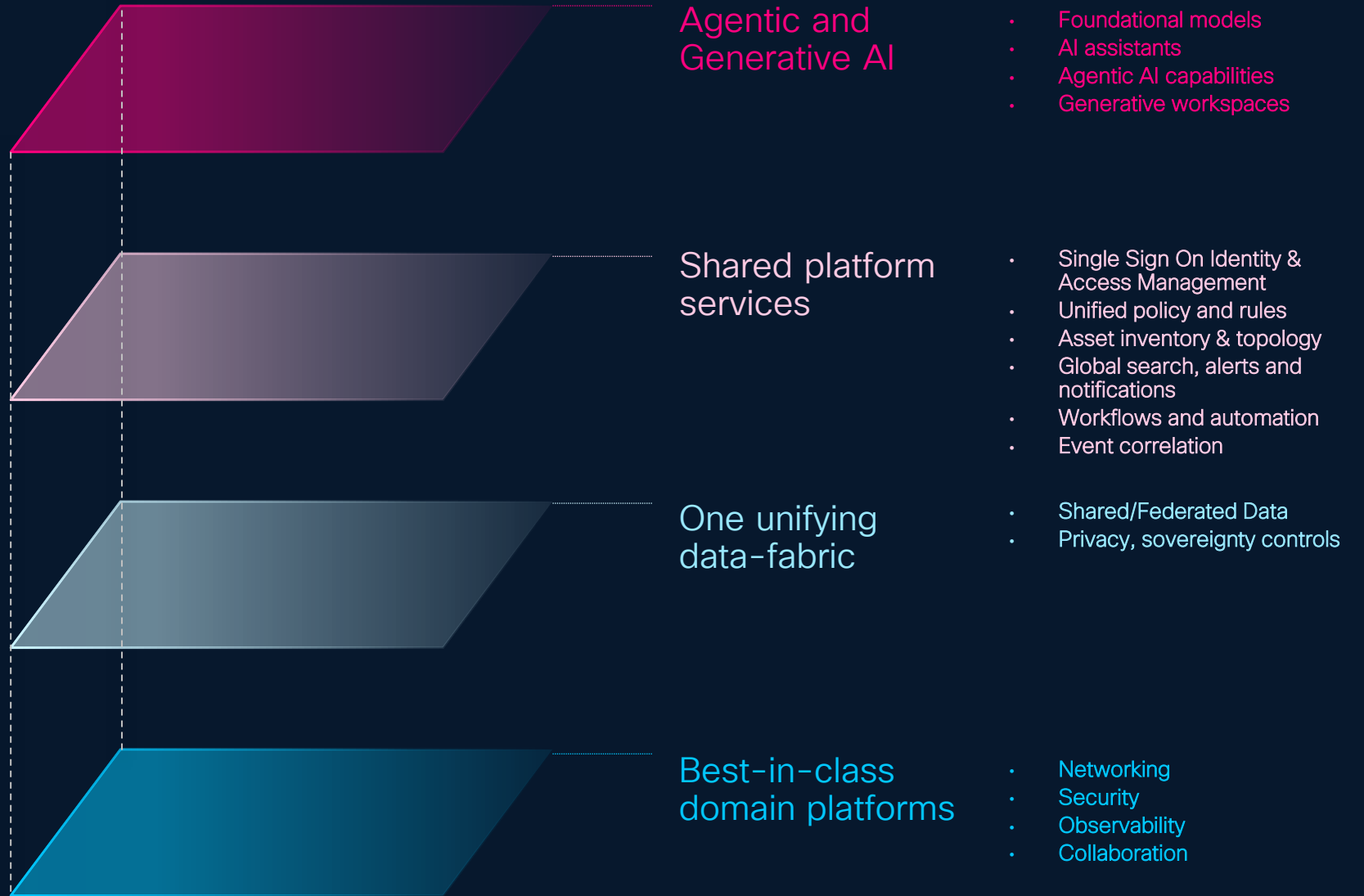


Dynamic Troubleshoot Agent Innerworkings



Cisco Cloud Control

Do more with scalable, layered architecture



Introducing Cisco Cloud Control



Global Topology View

The screenshot displays the Cisco Cloud Control interface for the 'Global Topology View'. The top navigation bar includes 'Acme Corp, Inc' and various system modules like Mission Control, Meraki, Security, ThousandEyes, Webex Control Hub, and Intersight. The main header shows 'Topology' with search and filter options. The filters are set to 'Physical', 'L2', and 'L3'. A 'Global' summary panel on the left shows 'Elevated Latency' with 133 total sites, broken down into 118 Good, 13 Fair, and 2 Poor. A map of the world shows site counts in various regions: 7, 16, 18, 10, 26, 14, 14, 12, and 11. A 'DC-APAC Singapore' label is visible in the Asia-Pacific region. A bottom navigation bar contains 'Mission Control', 'Global Inventory', and 'Topology'. A yellow banner in the bottom right corner reads 'Screen not final Beta 2'.

One place to see everything

Inventory Last day
List view AI insights

104 Assets

13 Critical PSIRT

17 LDOS ≤ 90d

24 Stale (> 60m)

82/22 Mngd / Unmngd

Critical PSIRT vulnerabilities detected Critical

13 Critical PSIRTs on 11 devices, highest in Tokyo Office.

Impact: Security risk - immediate patching required

11 devices 95% confidence

[Filter](#) [Open in AI canvas](#) [More action](#)

High-Risk Device Concentration Critical

3 devices (3%) have risk scores ≥80.

Impact: Concentrated risk exposure across infrastructure

3 devices 88% confidence

[Filter](#) [Open in AI canvas](#) [More action](#)

License Compliance Issues Warning

22 licenses expired (22%), 7 expiring soon.

Impact: Support coverage gaps and compliance risk

19 devices 97% confidence

[Filter](#) [Open in AI canvas](#) [More action](#)

Filter 1 Filter 2
Filters 104 results
[Generate report](#)

<input type="checkbox"/>	Host name	Product family	Product	PID	S/W version	LDOS	EoVSS	PSIRT	Risk score	Site	Owner	License
<input type="checkbox"/>	wireless-058	Wireless	AIR-CAP...	OCAKLX	17.4.23	11/17/2026	4/13/2026	C:2 H:1	91	TYO Office	Wireless Team	Not req
<input type="checkbox"/>	ntw-061	Networking	ISR4000	T8RQG4	17.6.56	4/27/2026	11/13/2028	C:2 H:2	91	SFO HQ	NET Team	Activ
<input type="checkbox"/>	ntw-091	Networking	2960X	UB5DV0	21.8.70	7/8/2025	7/12/2025	C:2	86	SFO HQ	NET Team	Expir
<input type="checkbox"/>	iotedge-059	IoT/Edge	LoRaWAN...	V6TLWO	19.8.75	4/8/2025	5/5/2026	C:1 H:1	69	AUS DC	COL Team	Activ
<input type="checkbox"/>	iotedge-011	IoT/Edge	IR1101	PS3SAD	13.6.64	7/7/2025	2/3/2027	H:2	58	AUS DC	COL Team	Activ
<input type="checkbox"/>	dtc-003	Data center	UCS-C220	L47G30	23.0.83	4/18/2025	8/23/2025	H:3	57	LDN Office	DC Team	Expir
<input type="checkbox"/>	dtc-021	Data center	UCS-C220	7QAE6L	14.3.47	9/19/2026	5/18/2027	H:3	57	LDN Office	DC Team	Activ

Conclusion

Summary

- Agentic AI Architectures are rapidly changing, adopting new protocols and patterns
- Cisco's Deep Network Model is a fine-tuned model optimized to reason on networking tasks, such as troubleshooting
- AI Canvas is a natural language-first AgenticOps platform for working with your network
 - Communicating with your network
 - Troubleshooting / RCA
 - Policy and Compliance
 - Automation / Configuration
 - Much more to come!
- Cisco Cloud Control unifies operations with AI Canvas as the natural language interface

Complete your session surveys



Complete your surveys in the Cisco Events app.



Complete a minimum of 4 session surveys and the overall event survey to receive a unique Cisco Live t-shirt.

(from 11:30 on Thursday, while supplies last)

Continue your education



Visit the Cisco Showcase for related demos



Book your one-on-one Meet the Engineer meeting

Visit the Technical Solutions Clinics to discuss your technical questions



Attend the interactive education with DevNet, Capture the Flag, and Walk-in Labs



Visit the On-Demand Library for more sessions at CiscoLive.com/On-Demand

Contact me at: Insert preferred comms method

Thank you



