

CISCO *Live!*

ALL IN

#CiscoLive



The bridge to possible

Core and Distribution

Catalyst 9000 Series Switching Family

Kenny Lei

Technical Marketing Engineer

BRKARC-2099

CISCO *Live!*

#CiscoLive

Cisco Webex App

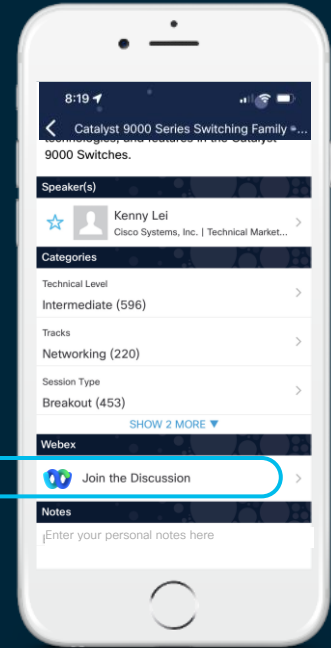
Questions?

Use Cisco Webex App to chat with the speaker after the session

How

- 1 Find this session in the Cisco Live Mobile App
- 2 Click “Join the Discussion”
- 3 Install the Webex App or go directly to the Webex space
- 4 Enter messages/questions in the Webex space

Webex spaces will be moderated by the speaker until June 17, 2022.



<https://ciscolive.ciscoevents.com/ciscolivebot/#BRKARC-2099>



Agenda

- Digital trends
- Cisco ASICs
- Catalyst 9500X / 9500
- Catalyst 9600X / 9600
- Features and Scales
- Summary

Digital trends shaping the future of business



Hybrid work

Work from home | Work from anywhere | Work from office



Industry 4.0

Wireless | Automation | Internet of Things | AI/ML



Hybrid cloud

Private cloud | Hybrid cloud | Public cloud



and the **network** is the core engine of hybrid work

New Access requirements for Future Campus

Distribution/Core/Edge

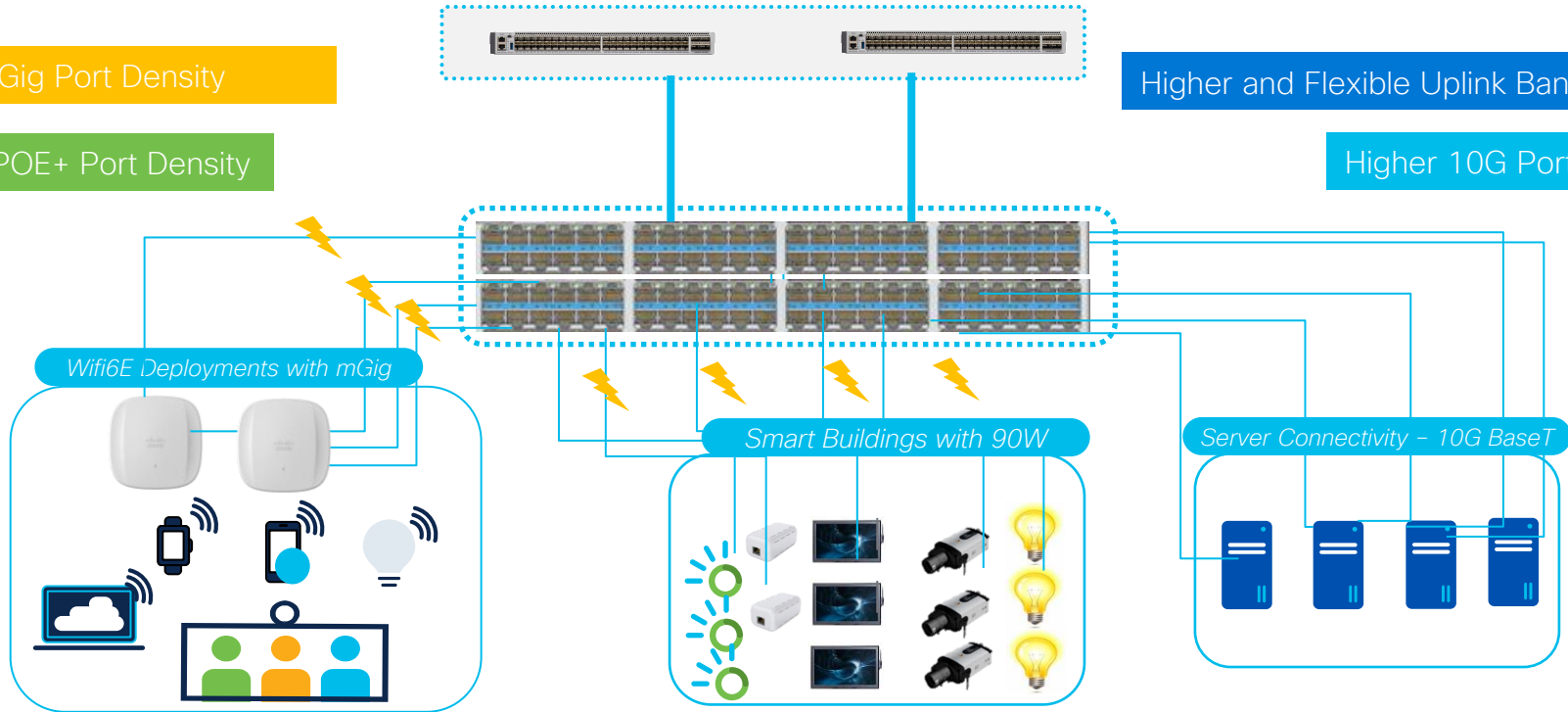
Higher Speeds, Scale, Buffer, etc.

Higher mGig Port Density

Higher UPOE+ Port Density

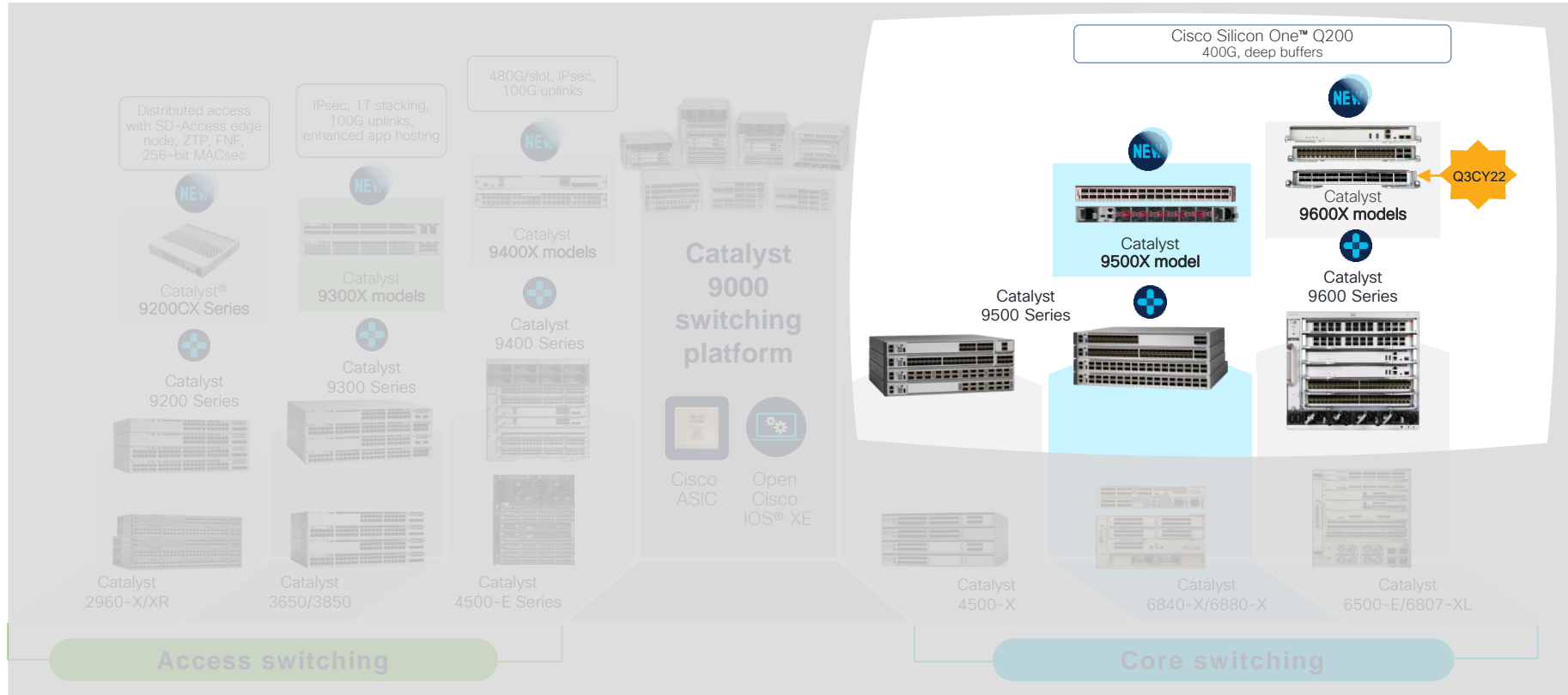
Higher and Flexible Uplink Bandwidth

Higher 10G Port Density



Catalyst 9000X – Expanding industry leadership

Adding the “X factor” to the industry’s leading switching family



Cisco ASICs

Cisco UADPs and Silicon One



Catalyst 9000 Series – Common Building Blocks



Programmable x86
Multi-Core CPU

Application Hosting
Secure Containers



Open IOS XE®
Polaris

Model-Driven APIs
Modular Patching



Cisco ASICs
UADPs and Q200

Programmable Pipeline
Flexible Tables

Same binary image for both UADP and Silicon One C9K platforms*

UADP 3.0



~20B transistors
16-nm technology



Customizable ASIC templates



36-MB unified buffer



Double-width tables



3x more FIB scale



Up to 1.6 TB bandwidth



1G, 10G,
25G, 40G, and 100G speeds




Up to 1000Mpps throughput



Up to 1.6Tbps ASIC Interconnect

UADP 2.0XL and 3.0 ASIC comparison

 Capabilities (per ASIC)	UADP 2.0XL	UADP 3.0
Switching and forwarding capacity	240 Gbps/360 Mpps	1.6 Tbps/1 Bpps
Stack bandwidth	2x 360 Gbps	2x 400 Gbps
Buffer capability	2x 16 MB	36 MB shared buffer
Switch Database Management (SDM) template	Fixed templates	Customizable templates
NetFlow capabilities	Dedicated NetFlow table	Shared NetFlow table
v4 FIB scale	Total 228,000*	Total 412,000*
v4 and v6 scale	v6 reduced by half	v4 and v6 same scale

* Maximum ASIC capability.

Cisco Silicon One™



Switching Silicon

- **High Throughput**
extremely fast hardware-based L2-L4 forwarding and services (measured in Terabits per second)
- **Optimized Scale**
optimized for Campus LAN environments with moderate IP & MAC scale (10s-100s of thousands)
- **Low Latency**
extremely low hardware-based system latency (measured in Nanoseconds & Microseconds)
- **Streamlined Buffering**
shallow buffering systems to reduce latency, with very high throughput



Routing Silicon

- **Flexible Features**
complex, stateful L3-L7 forwarding and services (measured in Gigabits per second)
- **Massive Scale**
optimized for WAN/SP environments with very high IP scale (100s of thousands - millions)
- **Mixed Interfaces**
support for Ethernet, Serial, Cellular and other types and speeds in a single system
- **Deeper Buffering**
deep buffers to accommodate different speeds, bursts and different flow patterns

Cisco Silicon One Bringing Switching and Routing convergence

Cisco Silicon One™ Q200

Industry leading Switching and Routing Silicon



12.8T BW



8.1 Bpps



8G HBM for
deep buffers



2M IPv4
or 1M IPv6
route scale



Fully P4
Programmable
Pipeline



50G PAM4
Serdes



First 7nm ASIC providing
lowest watts/GE power
consumption



Fully P4 programmable enabling
feature velocity



Multi slice architecture for
flexibility and scale

Routing Capabilities with Switching Power and Performance

Extending Cisco Catalyst 9500 & 9600 Series

Powered by Cisco Silicon One™ Q200 ASIC



C9500 & C9600-SUP1 (w/ UADP 3.0)

Optimized for Features

- ✓ **Speed**
 - 1/10 & 25G SFP
 - 40 & 100G QSFP
- ✓ **Scale**
 - Upto 128K MACs
 - Upto 256K Routes
 - 108MB Buffers (3x 36MB)
- ✓ **Services**
 - L2/L3 Routing, MPLS
 - LAN MACsec, Netflow, NAT
 - Custom ASIC Templates
 - Campus Fabric (SDA & EVPN)

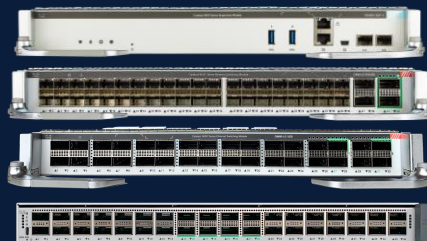
Double Existing Throughput



WAN MACsec,
1588v2 PTP



C9600X-SUP-2
C9600-LC-40YL4CD
C9600X-LC-32CD



10^x

Routing &
MPLS Scale



C9500X-28C8D



50GE, 400GE,
Coherent DWDM

80MB Low-Latency +
8GB High-BW Buffers



C9500X & C9600X-SUP2 (w/ S1 Q200)

Optimized for Scale

- ✓ **Speed**
 - 10/25G & 50G* SFP
 - 40/100G & 200*/400G QSFP
- ✓ **Scale**
 - Upto 256K MACs
 - Upto 2M Routes
 - 80MB + 8GB Buffers
- ✓ **Services**
 - L2/L3 Routing, MPLS/TE
 - LAN & WAN-MACSec, Netflow, NAT*
 - Custom ASIC Templates
 - Campus Fabric (SDA & EVPN*)

Maximum Investment Protection

400G Leadership in Campus

Unmatched Flexibility

* Hardware capable



Catalyst 9500X/9500



Cisco Catalyst 9500 Series

Purpose-built fixed core/aggregation switches

UADP 2.0XL



UADP 3.0



Silicon One Q200

- 40G at the price of 10G
- Industry's first 40G enterprise switch
- Optimized 10G switch for midsize backbone



- Up-to 48x 25 GE Ports
- Industry's first 100G enterprise switch
- Flexible templates



- Reversible Bi-directional Airflow
- Ultra Deep 8GB Buffers
- High route scale (2M) and Mac scale (256K)



Catalyst® 9500X – Extending Cisco® Catalyst® 4500-X and 6800 Series leadership in fixed core

Up to 6 Tbps

Up to 8 Bpps

No oversubscription

8x 400GE Density

Pluggable SSD storage

USB 3.0

8x memory and 4x flash

8 core CPU

Customizable templates

Cisco StackWise® Virtual*



Modular fans



Modular uplinks



Modular power supplies



Storage for application hosting

Catalyst 9500 Series

Extending the Catalyst 9500 High-Performance Fixed Core

Non-XL Scale

Catalyst 9500 High Perf.
(UADP 3.0)



C9500-32C / C9500-32QC



C9500-48Y4C / C9500-24Y4C

Total Capacity

3.2 Tbps

32 x 100G or
48 x 25G + 4 x 100G

XL Scale

Catalyst 9500X
(S1 Q200)



C9500X-28C8D

Core
+
Edge

Total Capacity

6.0 Tbps

36 x 100G or
28 x 100G + 8 x 400G

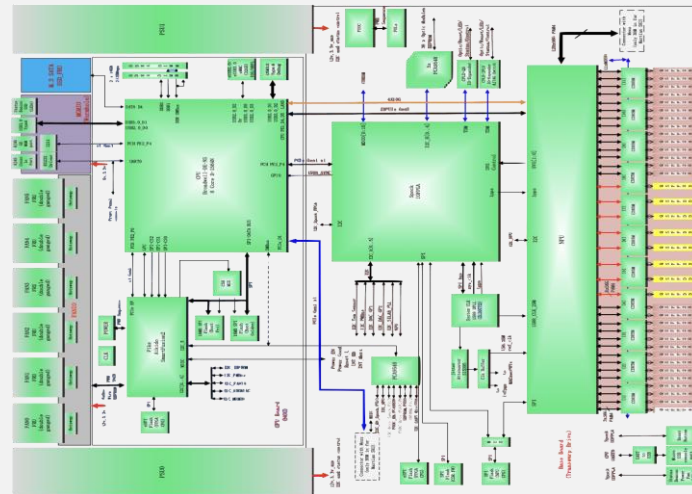
2x

6.0 Tbps

C9500X-28C8D

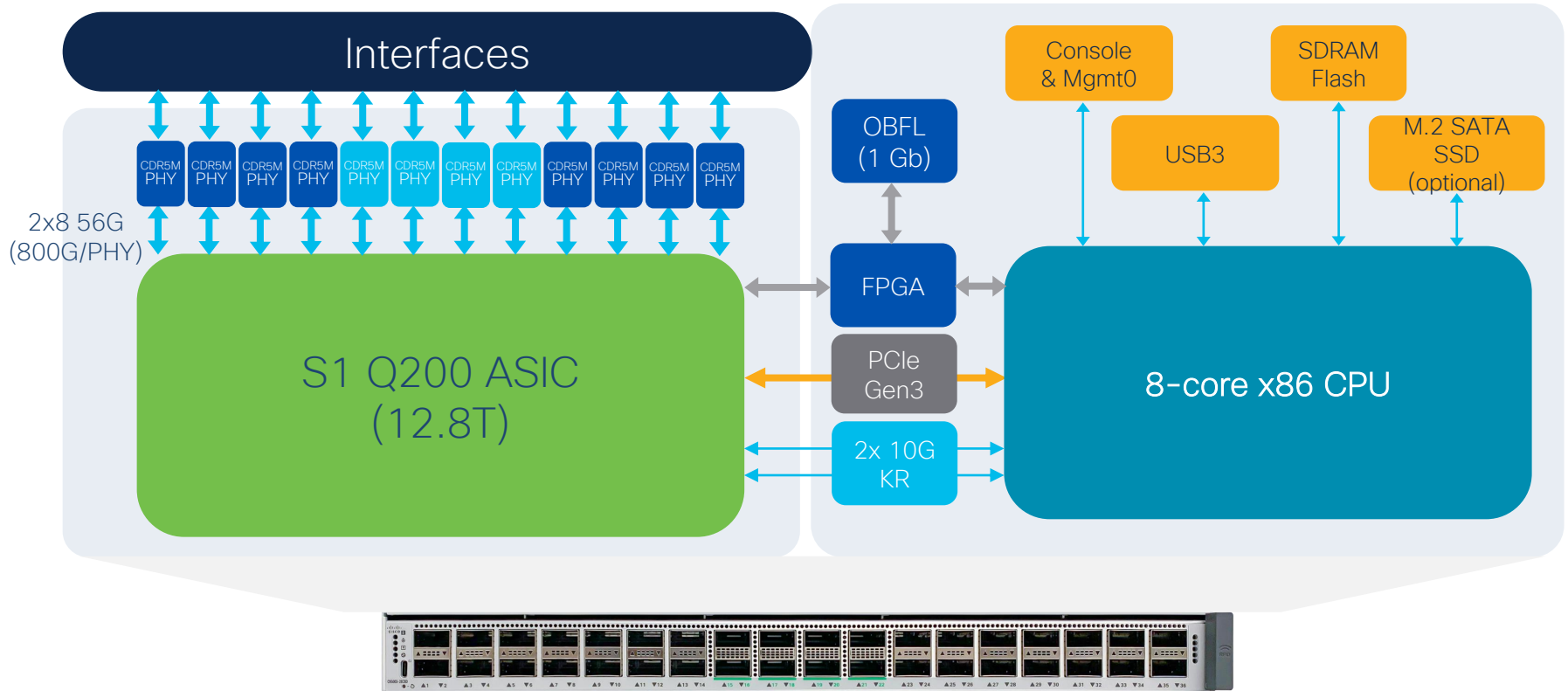
Gen2 Fixed 1RU QSFP Switch - 36x 100G / 28x 100G + 8x 400G

- 1x **Cisco SiliconOne Q200** ASIC
 - **6.0 Tbps** System Throughput
 - **28x QSFP28** ports - 40/100GE
 - **8x QSFPDD** ports - 100/200*/400GE
- 1x **8C 2.4GHz x86** CPU with 2x **16GB (32GB) DDR4** DRAM
- **16GB Flash; Optional SSD (Up to 960G)**
- 12x **CDR5M** PHYs
 - MACSec, WAN-MACSec, ClearTag v3.4
 - IEEE 1588 & PTPv2*
- Various SFP Breakout & QSA support*



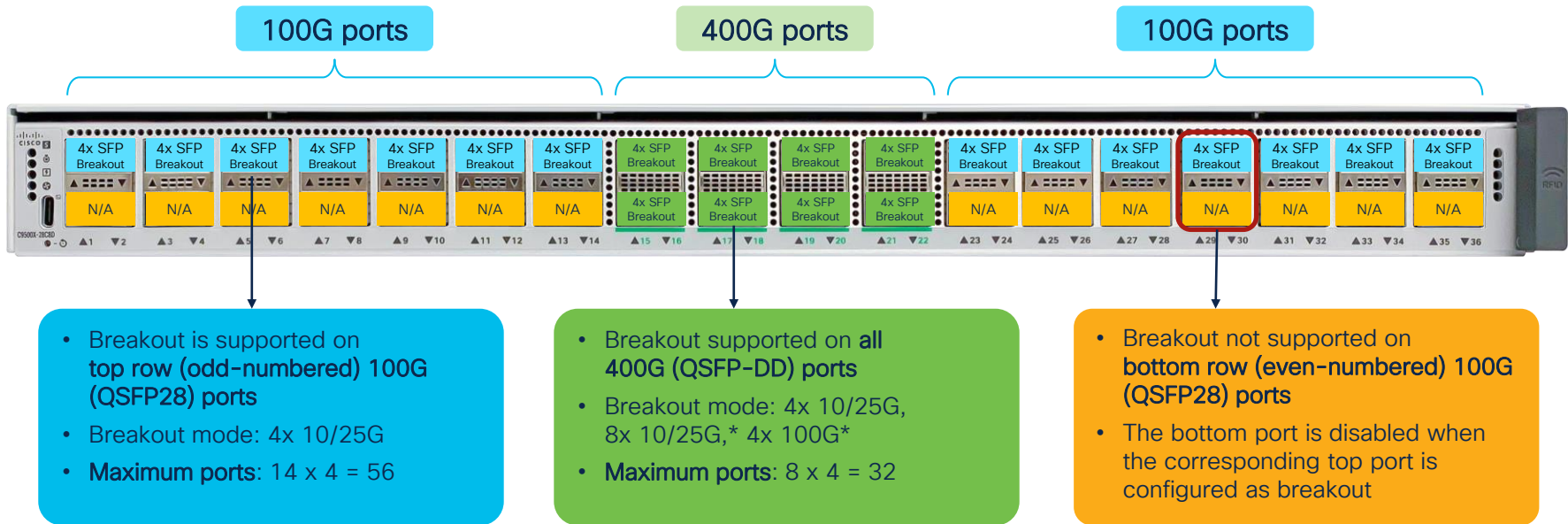
*Hardware capable

C9500X-28C8D Block Diagram



C9500X-28C8D

SFP breakout and QSA* support



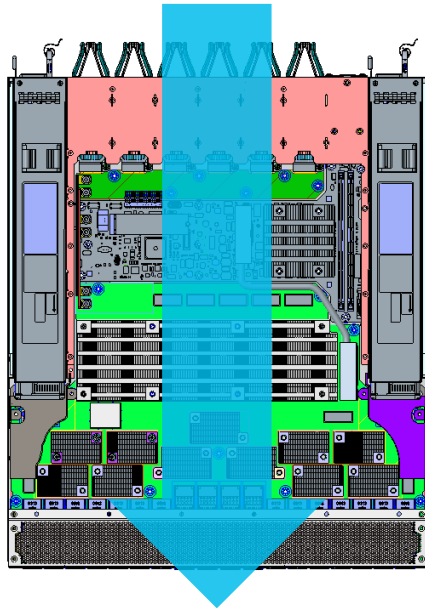
Maximum ports with breakout at FCS: 88 (56 +32)

* Hardware capable. System can support up to 120x 10/25G.

C9500X – Reversible Airflow

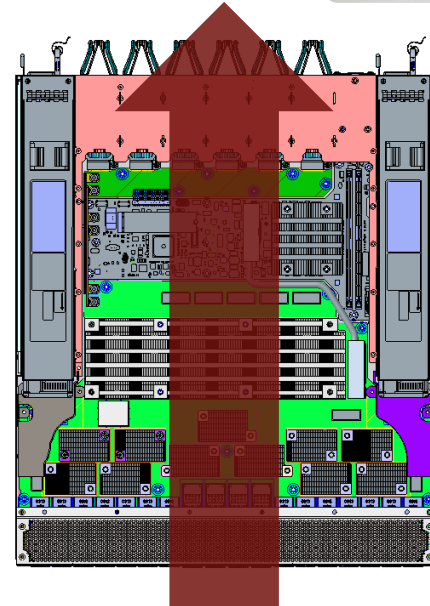


Back to Front
Port-side Exhaust



- Color of Fan Unit handle/latch represents direction of airflow
- Different Fan PIDs for different airflow directions
 - **Royal Blue** – Back to Front
 - **Burgundy** – Front to Back
- All Fans must be the same color (direction) to work correctly

Front to Back
Port-side Intake

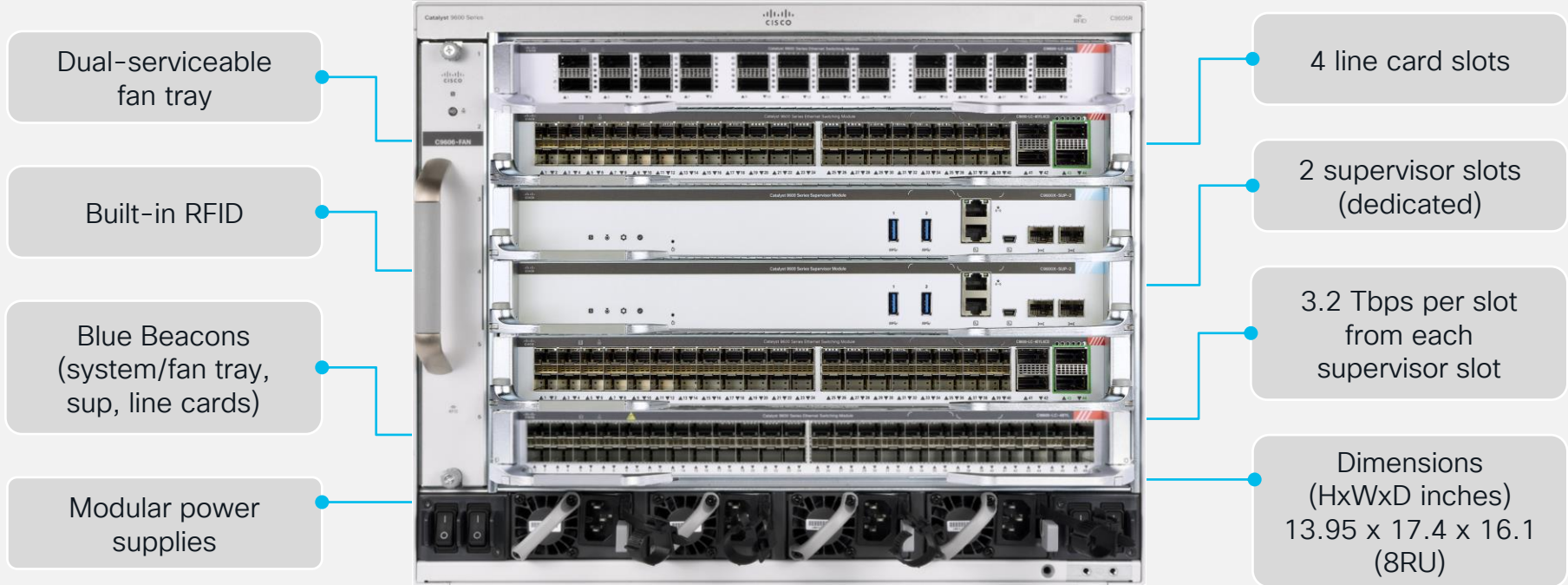


Single 1500W AC/DC PSU
with Cisco Grey latch
for both airflow directions

Catalyst 9600X/9600



Cisco Catalyst 9600 Series Chassis



Catalyst 9600 Series

Extending Modular Core with a Performance-Optimized Supervisor 2



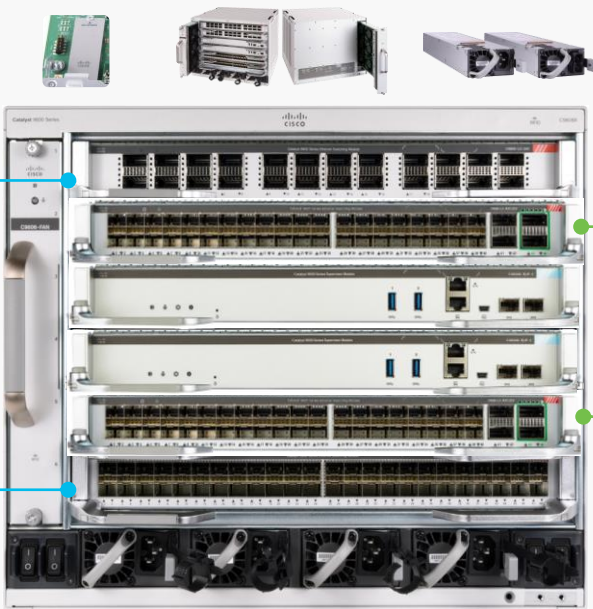
Supervisor 1

Total Capacity

4.8 Tbps

Slot B/W

1.2 Tbps



Gen1
1.2T /slot

Gen2
3.2T /slot

Gen2
3.2T /slot

Gen1
1.2T /slot



Supervisor 2

Total Capacity

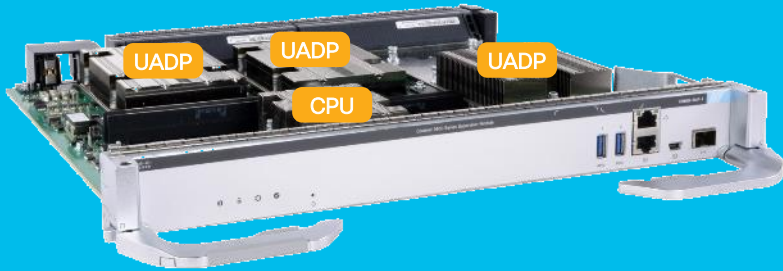
12.8 Tbps

Slot B/W

3.2 Tbps



Cisco Catalyst 9600 Series Supervisor 1



4.8 Tbps (full duplex)

1.2 Tbps per slot

3x UADP 3.0 ASIC

8 core X86 CPU
@2.0 Ghz

M.2 SATA SSD
(optional: up to 960G)

16G DDR4 memory

Built-in RFID

Mgmt ports: copper
and fiber

Blue Beacon

2x USB3
1x mini-B USB console

Cisco Catalyst 9600 Series Supervisor 2



12.8 Tbps (full duplex)

3.2 Tbps per slot

1x Silicon One™ Q200
ASIC

8 core X86 CPU
@2.7 Ghz

M.2 SATA SSD
(optional: up to 960G)

32G DDR4 memory

Built-in RFID

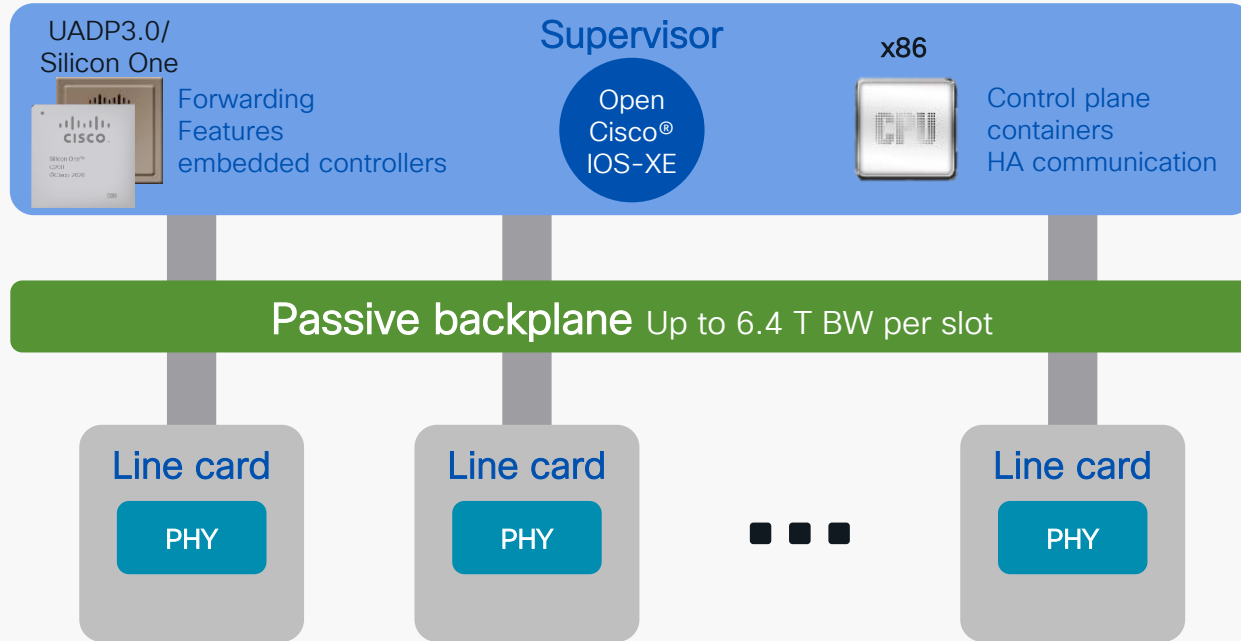
Mgmt ports: copper
and 2x10G fiber

Blue Beacon

2x USB3
1x mini-B USB console

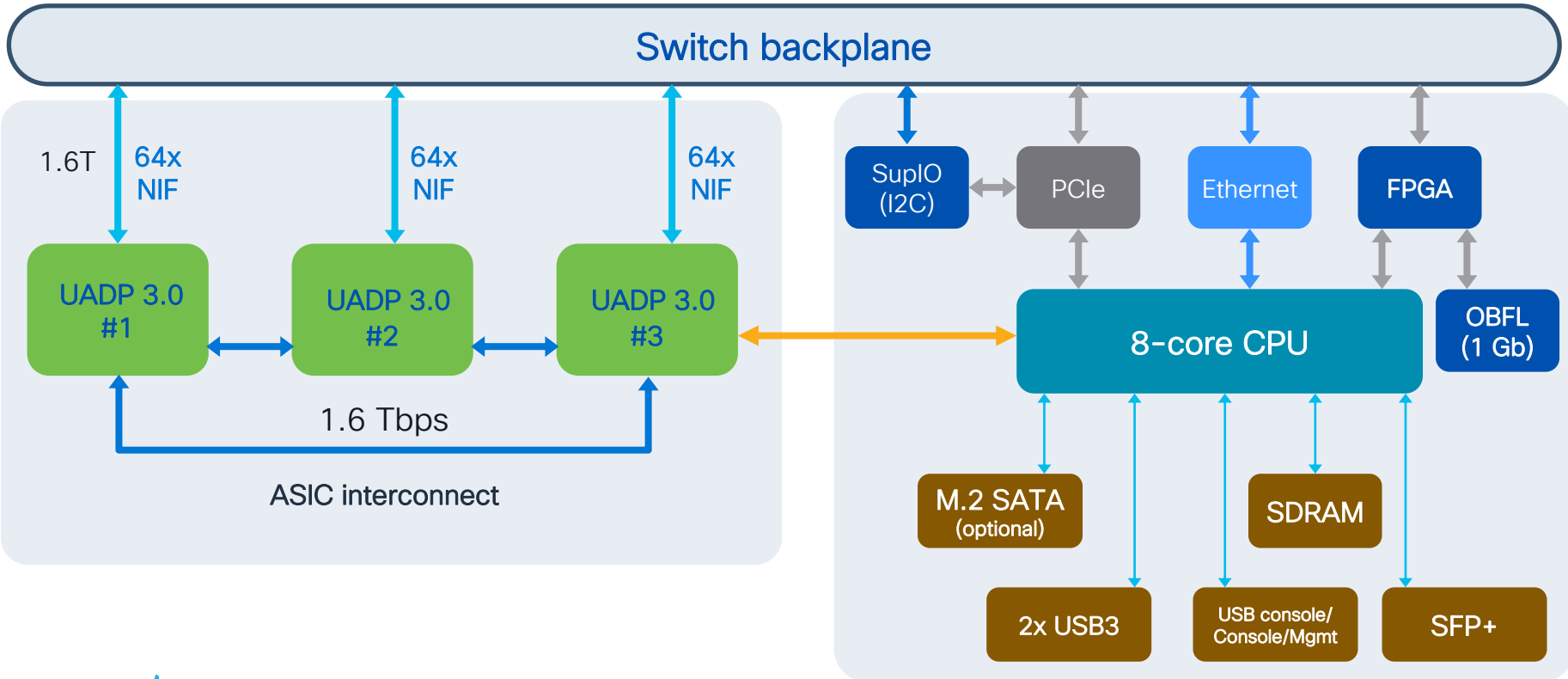
Architecture

Centralized architecture

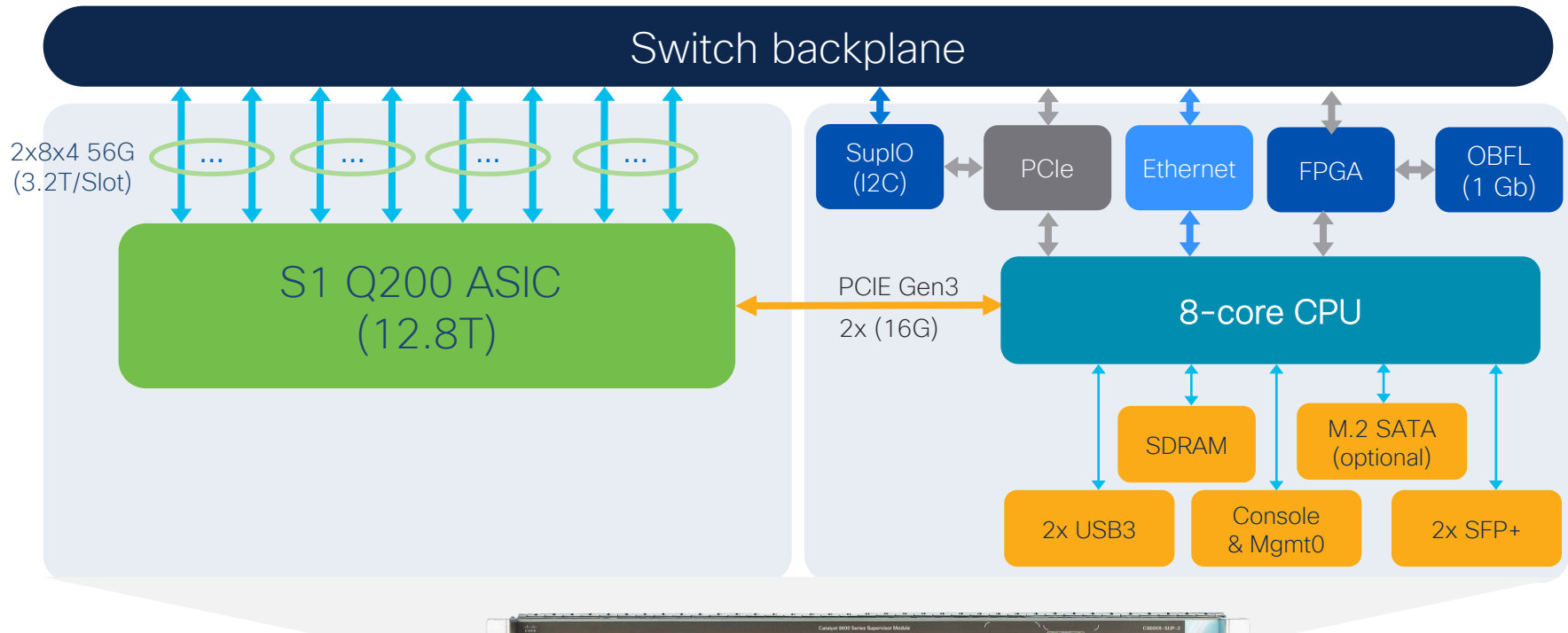


- Centralized architecture => **Uninterrupted supervisor switchover**
- Centralized architecture (Forwarding, queuing, and security are done on the supervisor) => **Unlock new capability** with a supervisor upgrade
- Transparent line cards => **Compatible** with new sup
- Passive backplane => **High MTBF**
- x86 CPU + storage => **App hosting**

Supervisor engine 1 - Block diagram



C9600X-SUP-2 Block Diagram



Catalyst 9600/X: Introducing the first 400G line cards in campus

Shipping

Catalyst® 9606R



C9600-LC-24C



C9600-LC-48YL



C9600-LC-48S



C9600-LC-48TX
(Multigigabit)



Combo line cards

C9600-LC-40YL4CD



NEW

3.2 Tbps with SUP-2
1.2 Tbps with SUP-1

C9600X-LC-32CD



Q3CY22

With SUP-2 only (3.2Tbps)

Provides for uplink
requirement without using
additional slot



Dual-personality
line card



Flexible speed
support



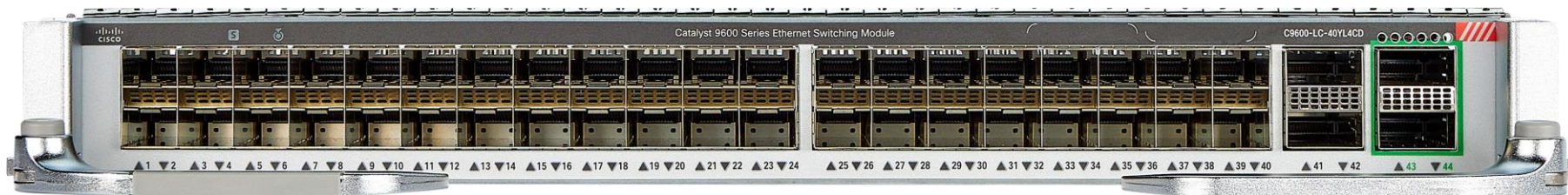
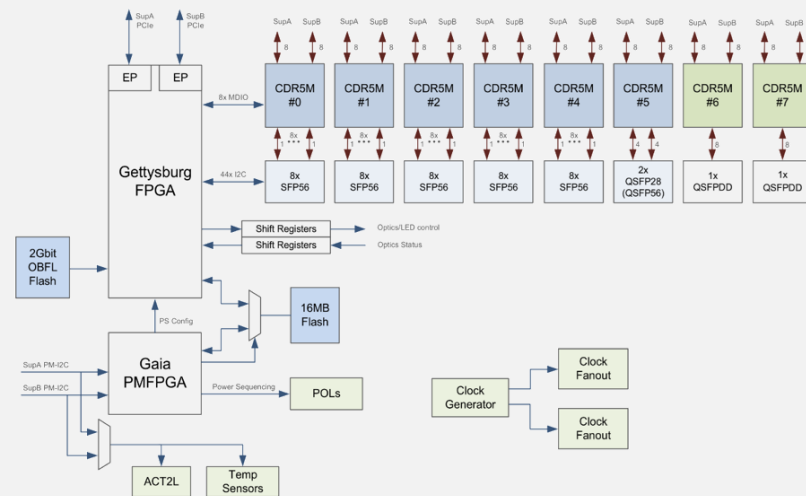
Lower total BoM
cost, save on
additional line
cards

C9600-LC-40YL4CD

Gen2 Combo Line-Card – 40xSFP56 + 2xQSFP56 + 2xQSFPDD

3.2 Tbps

- **3.2 Tbps** With Gen2 Sup
 - 40x SFP56 ports - 10/25/50*GE
 - 2x QSFP56 ports - 40/100/200*GE
 - 2x QSFPDD ports - 40/100/200*/400GE
- **1.2 Tbps** With Gen1 Sup
 - 40x SFP28 ports - 1/10/25GE
 - 2x QSFP28 ports - 40/100GE
- 8x **CDR5M** PHYs
 - MACSec, WAN-MACSec, ClearTag v3.4
 - IEEE 1588 & PTPv2*
 - Hitless MUX (HMUX)
- Various Breakout & QSA support (QSFP ports)*



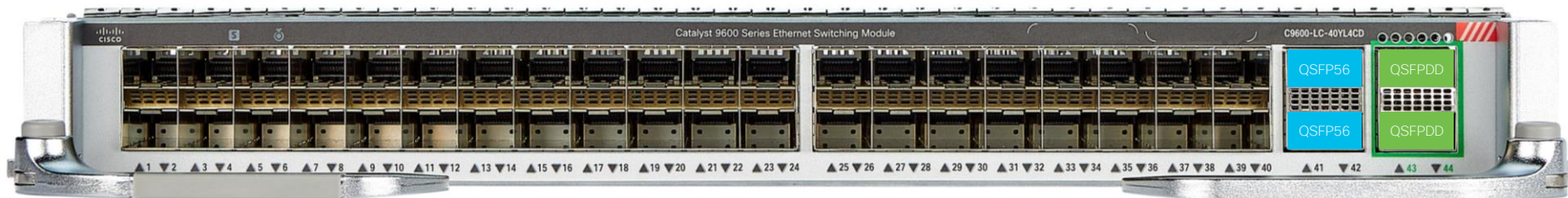
* Hardware capable

C9600-LC-40YL4CD Ports and Speeds Support

with Sup2: 3.2Tbps

40x 10/25/50*GE + 2x 40/100/200*GE + 2x 40/100/200*/400GE

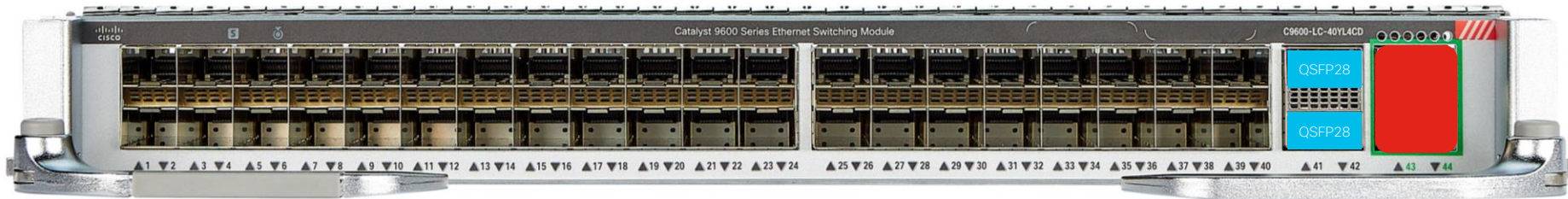
IOS-XE 17.7.1



with Sup1: 1.2Tbps

40x 1/10/25GE + 2x 40/100GE

IOS-XE 17.8.1



* Hardware capable

C9600X-LC-32CD

Gen2 Module - 30 x QSFP28 + 2 x QSFP-DD

3.2
Tbps

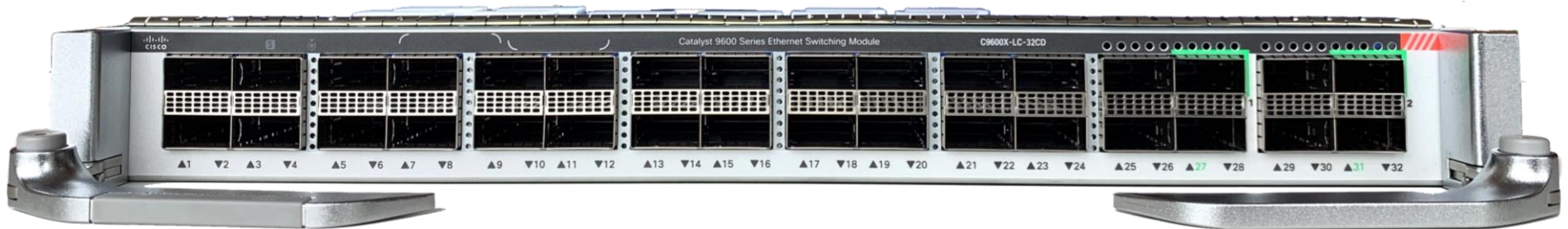
- **3.2Tbps with Supervisor 2 Only**
 - 30 x QSFP28 ports, 40/100GE
 - 2 x QSFP-DD ports, 40/100/200*/400GE
- **NOT supported with Supervisor 1**
- **8 x CDR5M + 2 x CDR5L PHYs**
 - MACSec, WAN-MACSec, ClearTag v3.4
 - IEEE 1588 & PTPv2 (Precision Time Protocol)
 - Hitless MUX (HMUX)



Supervisor 2



Supervisor 1

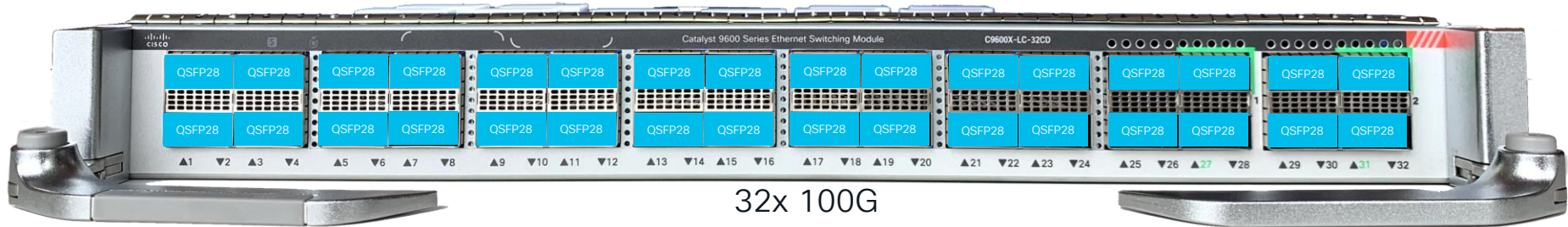


* Hardware capable

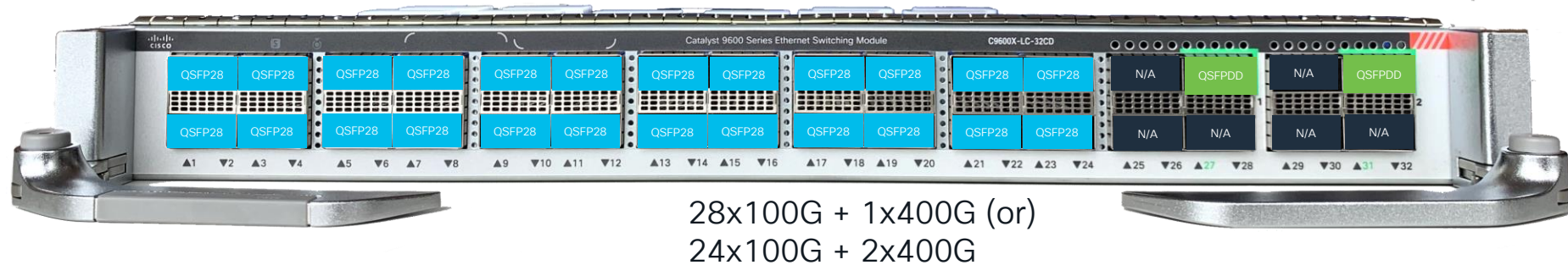
C9600X-LC-32CD

100G / 400G Port Modes

All 100G (QSFP28) Mode (Default):



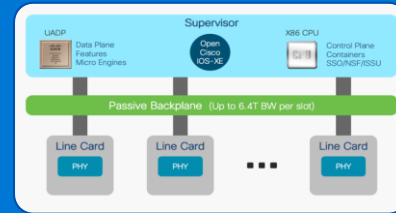
Two 400G (QSFP-DD) Mode:



Gen1 Line-Cards Support with SUP2

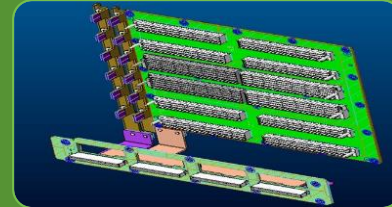
Centralized Architecture

- Gen1 Line-Cards supported*
- Only PHYs on the Line-Cards
- All forwarding on the Supervisor (ASIC)



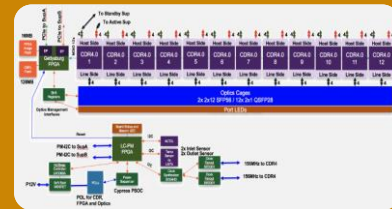
Additional Bandwidth ☺

- C9606 backplane traces support up to 56G PAM4
- Gen1 Line Cards now support up to 2.4T per Slot
 - 24 x 100G QSFP on LC-24C
 - 48 x 50G** SFP on LC-48YL



No MACsec support ☹

- Q200 does not have onboard Crypto engine
 - Gen2 LCs use newer CDR5M PHY for MACsec
- UADP has onboard MACsec engine
 - Gen1 LCs use older CDR4 PHY (not MACsec capable)



* C9600-LC-48S is not supported with Sup2

** Hardware capable

Catalyst 9600 Line Card Support Matrix



	C9606 Chassis	
	C9600-SUP-1	C9600X-SUP-2
C9600-LC-24C	✓ 24x 40G or 12x 100G	✓ 24x 40G/100G (No MACsec)
C9600-LC-48YL	✓ 48x 1/10G and 25G	✓ 48x 10/25G and 50G* (No MACsec, no 1G)
C9600-LC-48TX	✓ 48x 1/2.5/5G and 10G (Multigigabit)	✓ 48x 10G (No MACsec, no 1/2.5/5G)
C9600-LC-48S	✓ 48x 1G SFP	✗
C9600-LC-40YL4CD	✓ 40x 1/10G and 25G + 2x 40G and 100G	✓ 40x 10/25G and 50G* + 2x 40/100G and 200G* + 2x 40/100/200G* and 400G MACsec and WAN MACsec (no 1G)
C9600-LC-32CD	✗	✓ 30x 40/100G + 2x 40/100/200G* and 400G MACsec and WAN MACsec (no 1G)



SUP2 hardware does not support 1GE or below speeds natively

If 1GE downlinks are required, use SUP1



Features and Scales



Features and Scales

Silicon One Q200

UADP 3.0

	Default	Maximum (Custom)	Default	Maximum (Custom)
MAC Addresses	128K	256K	80K	128K
IP Host Routes	128K	256K	80K	128K
Multicast L2 groups	16K	64K*	16K	48K
Multicast L3 routes	32K	64K*	32K	48K
IP LPM Routes	2M	2M	212K	256K
MPLS Labels	256K	512K	32K	64K
SGT/OG Labels	32K	64K	32K	64K
NAT* Sessions	16K*	128K*	3K	16K
Sec ACL Entries	8K	10K*	12K	27K
QoS ACL Entries	8K	10K*	8K	21K
PBR* ACL Entries	8K*	10K*	3K	16K

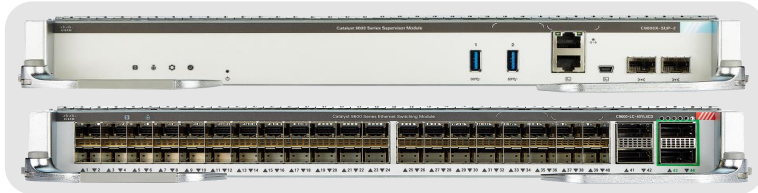
* Hardware capable on Q200



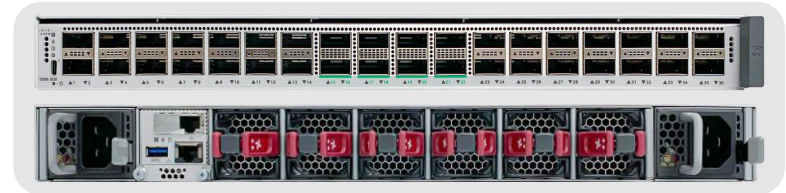
Catalyst 9500X & 9600X – Things to know

Next Generation Core + Edge Switching with Silicon One™ Q200

C9600X-SUP-2 + LC-40YL4CD



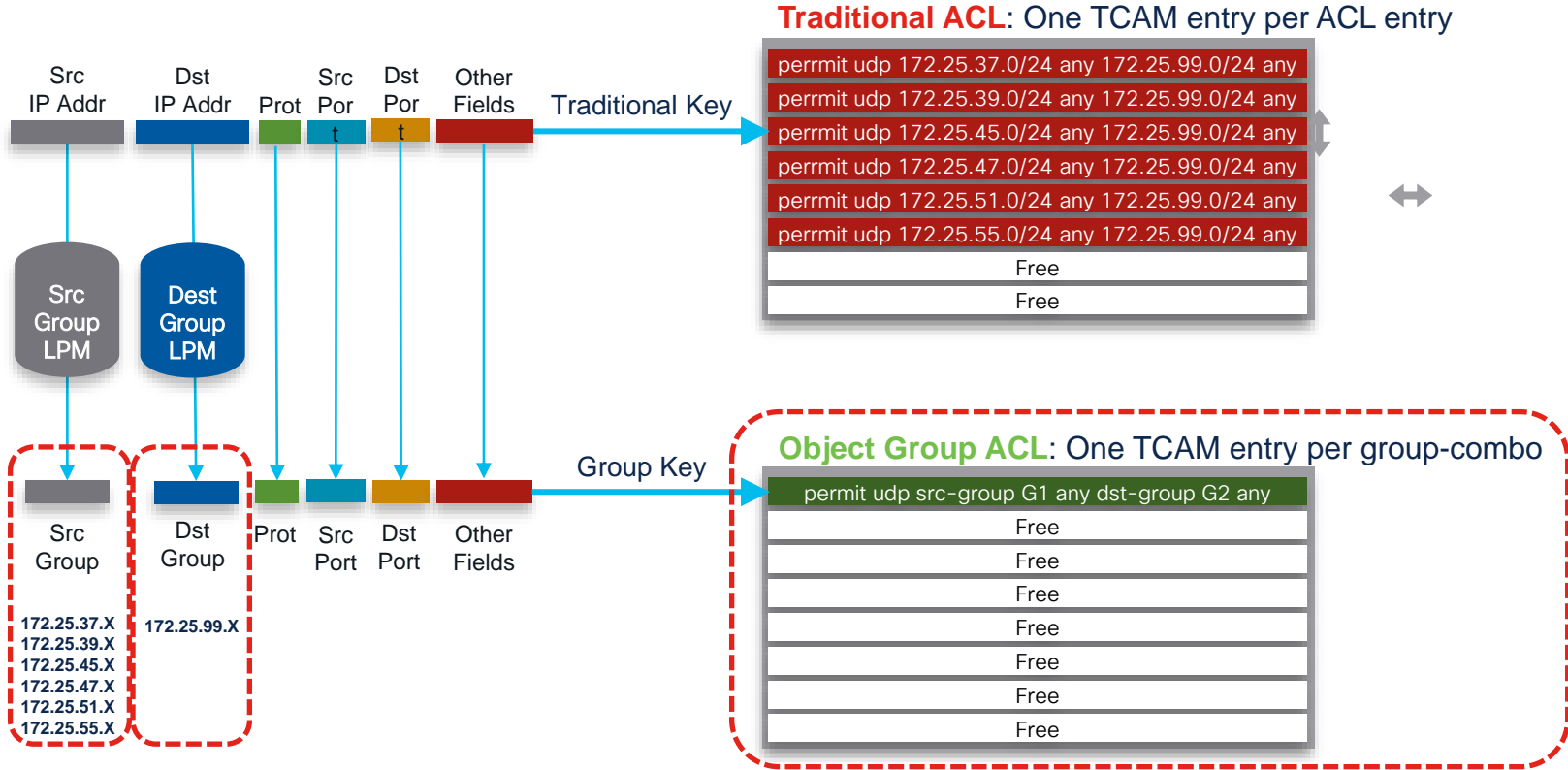
C9500X-28C8D



Technology	Brief Description	Diffs from UADP 3.0
✔ Large LPM Table	<ul style="list-style-type: none"> Up to 2M IPv4 or 1M IPv6 (hash efficiency is about 80%) Dedicated Memory for LPM 	<ul style="list-style-type: none"> Up to 256K IPv4/IPv6 with Custom SDM template LPM and other features share 416K ASIC memory
✔ Large MAC Table	<ul style="list-style-type: none"> Up to 256K MAC entries Custom SDM template. Shared with other features 	<ul style="list-style-type: none"> Up to 128K MAC entries with Custom SDM template MAC shared with LPM, etc. in same 416K ASIC memory
✔ VoQ QoS + HBM	<ul style="list-style-type: none"> Q200 has 80MB local (low-latency) + 8GB HBM (High Bandwidth Memory) buffer memory. Q200 uses a Virtual Output Queue (VoQ) architecture. All queuing and policing policies applied on Ingress. 	<ul style="list-style-type: none"> Max 36MB unified buffer memory per ASIC Supports both Ingress/Egress queuing & policing
✔ OGACL & SGACL	<ul style="list-style-type: none"> 8K IPv4, 4K IPv6 ACL TCAM entries. Object-Group & Security-Group ACLs use CEM to map IP-to-Group label, TCAM only uses L4 ACEs. (OG/SG ACL design is optimal for layer 3 environment). 	<ul style="list-style-type: none"> 64K ACL TCAM entries per ASIC Object-group expand into the TCAM space
✔ LAN & WAN-MACsec	<ul style="list-style-type: none"> Q200 does not have built-in crypto engine. C9500X & C9600X-LC uses new CDR5M PHY (400Gbps Full-Duplex). CDR5M provides line-rate (8x 400G = 3.2T) 802.1ae (LAN) MACsec and WAN-MACsec. 	<ul style="list-style-type: none"> UADP3 has built-in MACsec crypto (speed of ASIC) UADP3 only supports LAN MACsec (no WAN-MACsec)
✔ Flexible NetFlow*	<ul style="list-style-type: none"> Q200 does not have built-in Flow Cache memory (no hardware-based Netflow). C9500X & C9600X uses new Software-based FNF (≤ 2M entries), with a dedicated CPU core (~2Mpps). FNF sampler rate 1:1000, ~10Tbps of 512-Byte packets = ~2Mpps. 	<ul style="list-style-type: none"> UADP3 has built-in (HW) FNF, max 64K entries per ASIC FNF shared with LPM, etc. in same 416K ASIC memory

* Roadmap

Traditional ACL vs Group-Based ACL

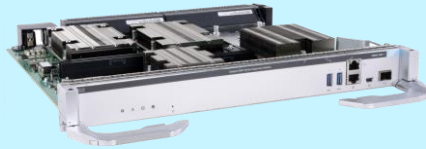


Catalyst 9500/X & 9600/X Series Core Positioning

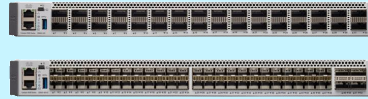
Next Generation Core + Edge Switching with Silicon One™ Q200



Feature Optimized C9500 & C9600-SUP-1



C9600-SUP-1



C9500

- ✓ Best-in-class Enterprise Core feature set
- ✓ Low speeds (1G – 40G) and port density
- ✓ Comprehensive MPLS, EVPN and SDA
- ✓ Ideal for Campus Core, Collapsed Core + Agg

Ideal for **C6K non-XL** deployment migration



Performance Optimized C9500X & C9600X-SUP-2



C9600X-SUP-2



C9500X

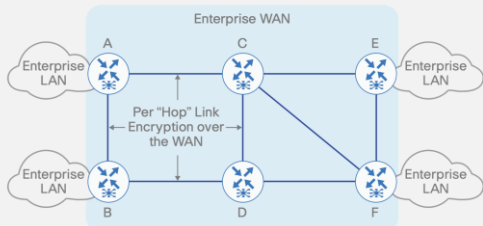
- ✓ Unmatched forwarding scale and performance
- ✓ High speeds (10G – 400G) and port density
- ✓ Scaled MPLS and SDA, WAN-MACsec
- ✓ Ideal for Campus Core + Edge, or Centralized WLC

Ideal for **C6K XL** deployment migration

WAN MACsec overview and use cases

Enabled in hardware on Catalyst 9000 Switches

MACsec

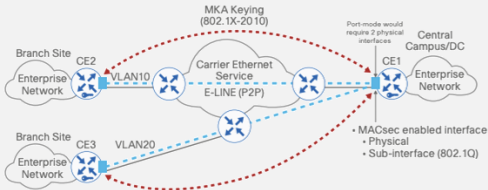


- Hop-by-hop encryption
- Directly connected Layer 2 links **only**
- Secure any direct link in campus/
WAN, including DWDM
- 256/128-bit AES encryption



Supported on **all Catalyst® 9000** models
All ports and speeds simultaneously

WAN MACsec



- End-to-end encryption across Layer 2 Ethernet WAN service
- EoMPLS/VPLS, Q-in-Q
- Point-to-point or point-to-multipoint
- Applications include secure site interconnect, DCI, storage replication
- 256/128-bit AES encryption



Catalyst 9600X



Catalyst 9500X

Supported on **Silicon One™** platforms*
All ports/speeds (up to 400G) simultaneously

App Hosting on C9K Switches

Existing Hardware

Managed via CLI or Cisco DNA Center

Real Time Processing

Lower Latency

Save Bandwidth



IT Operations and Monitoring Tools

Consolidate Physical Infrastructure



Security Agents and Functions

Enhance Visibility & Security Enforcement



Cloud Gateways with Serverless Edge Compute

Reduce App Latency & Optimize App Traffic



Customer Specific Applications

3rd Party App Hosting

Rich ecosystem partnership with 25+ certified apps and 200+ active customer

App Hosting

Hidden

	Resource type	Catalyst 9500 High Perf	Catalyst 9500-X	Catalyst 9600	Catalyst 9600-X
Networking	AppGig Port	Mgmt Port*	2x10G	Mgmt Port*	Mgmt Port* (2x10G CPU ports)
Resources	Memory	8GB	8GB	8GB	8GB
	CPU	1 core	1 core	1 core	1 core
	Storage	Up to 960GB (SATA)	Up to 960GB (SATA)	Up to 960GB (SATA)	Up to 960GB (SATA)

* Using loopback with any external ports



Catalyst 9500-High Perf/X

M2 SATA
Up to 90GB



Back panel



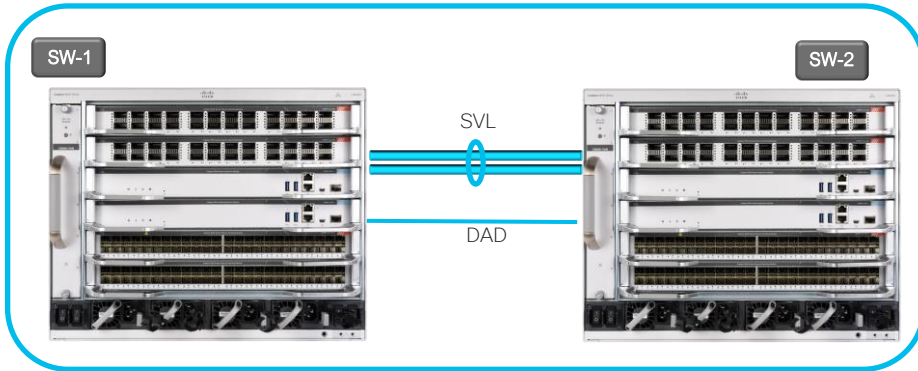
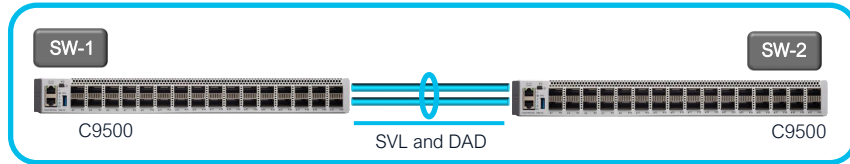
Catalyst 9600/X

M2 SATA
Up to 960GB



Plug into removable SUP

StackWise Virtual



- Supported on all the UADP base platform today
- Roadmap for the Silicon One ASIC platforms

- Simplify Operations by Eliminating STP, FHRP and Multiple Touch-Points
- Double Bandwidth & Reduce Latency with Active-Active Multi-chassis EtherChannel (MEC)
- Minimizes Convergence with Sub-second Stateful and Graceful Recovery (SSO/NSF)

Summary



The Catalyst 9000 Core and Dist Switches

Powering the cloud scale world

Cat 9500 / 9500X
Powered by UADP 3.0 / S1 Q200

NEW

Catalyst 9500X
Powered by S1



100G/400G SKU's

Catalyst 9500
Powered by UADP 3.0



25G/100G SKU's

Catalyst 9600 / 9600X
Supervisor-1 Powered by UADP 3.0
Supervisor-2 Powered by S1 Q200



2.4Tbps Per Slot

NEW



6.4Tbps per Slot

NEW

Combo line cards



Fiber line cards

400G/100G/200G/50G/25G/10G/1G

- 40 x 50G/25G/10G/1G + 2 x 200G/100G + 2 x 400G
- 32x 100G; or 28x 100G + 400G; or 24x 100G + 2x 400G
- 24 x 100G / 40G
- 48 x 50G/25G/10G/1G
- 48 x 1G

Copper line card

- 48 x Mjg (Non-PoE)

Extending Core Leadership with Catalyst X Series

- 2.6x Bandwidth
- WAN MacSec Support
- 400G Uplinks
- 2M Route Scale
- Deep Buffers

Cisco Catalyst 9000 Core Series leadership

- SD-Access
- MACsec-256 link encryption
- High Availability (SSO/ISSU)
- Application Hosting
- Model-driven programmability
- Patching and GIR
- Streaming telemetry



Simplicity with Open IOS-XE



Backward compatible for investment protection



Secure

Technical Session Surveys

- Attendees who fill out a minimum of four session surveys and the overall event survey will get Cisco Live branded socks!
- Attendees will also earn 100 points in the Cisco Live Game for every survey completed.
- These points help you get on the leaderboard and increase your chances of winning daily and grand prizes.



Cisco Learning and Certifications

From technology training and team development to Cisco certifications and learning plans, let us help you empower your business and career. www.cisco.com/go/certs

Pay for Learning with
Cisco Learning Credits

(CLCs) are prepaid training
vouchers redeemed directly
with Cisco.



Learn



Cisco U.

IT learning hub that guides teams and learners toward their goals

Cisco Digital Learning

Subscription-based product, technology, and certification training

Cisco Modeling Labs

Network simulation platform for design, testing, and troubleshooting

Cisco Learning Network

Resource community portal for certifications and learning



Train



Cisco Training Bootcamps

Intensive team & individual automation and technology training programs

Cisco Learning Partner Program

Authorized training partners supporting Cisco technology and career certifications

Cisco Instructor-led and Virtual Instructor-led training

Accelerated curriculum of product, technology, and certification courses



Certify



Cisco Certifications and Specialist Certifications

Award-winning certification program empowers students and IT Professionals to advance their technical careers

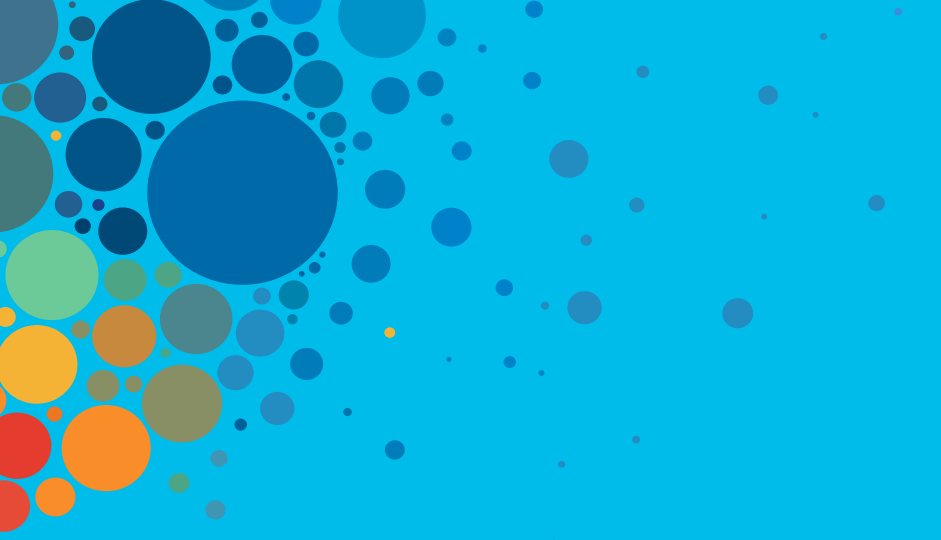
Cisco Guided Study Groups

180-day certification prep program with learning and support

Cisco Continuing Education Program

Recertification training options for Cisco certified individuals

Here at the event? Visit us at **The Learning and Certifications lounge at the World of Solutions**



Continue your education

- Visit the Cisco Showcase for related demos
- Book your one-on-one Meet the Engineer meeting
- Attend the interactive education with DevNet, Capture the Flag, and Walk-in Labs
- Visit the On-Demand Library for more sessions at www.CiscoLive.com/on-demand



The bridge to possible

Thank you

CISCO *Live!*

#CiscoLive

CISCO *Live!*

ALL IN

#CiscoLive