

CISCO *Live!*

ALL IN

#CiscoLive



The bridge to possible

Cisco+ Secure Connect Now

Deploy & Scale SASE for Secure Remote Worker in the Cloud

Eric Eddy

Principal Technical Marketing Engineer, Cisco Security

<https://ericeddy.blog>

BRKSEC-2129

CISCO *Live!*

#CiscoLive

Cisco Webex App

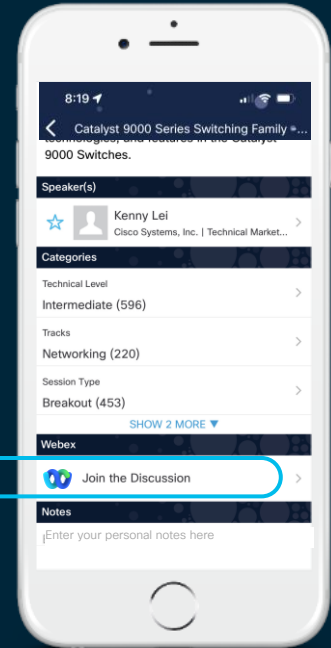
Questions?

Use Cisco Webex App to chat with the speaker after the session

How

- 1 Find this session in the Cisco Live Mobile App
- 2 Click “Join the Discussion”
- 3 Install the Webex App or go directly to the Webex space
- 4 Enter messages/questions in the Webex space

Webex spaces will be moderated by the speaker until June 17, 2022.

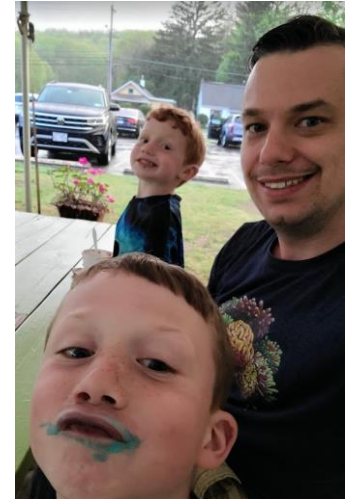
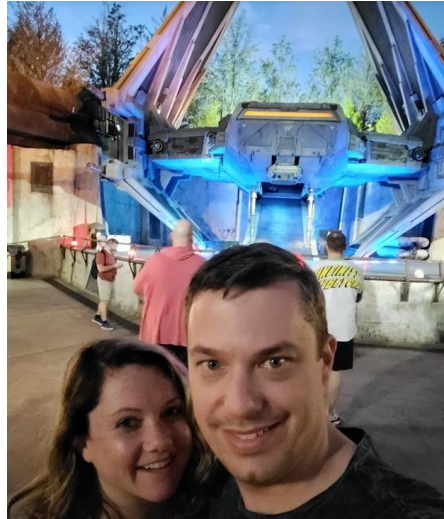


<https://cicolive.ciscoevents.com/cicolivebot/#BRKSEC-2129>

About Me

Eric Eddy

- erieddy@cisco.com
- Blog: www.ericeddy.blog
- Principal TME, CloudSec
- 12 years @ Cisco
- CCIE Sec #47300
- Husband + Father (5 & 6)
- Reef keeper & avid gamer

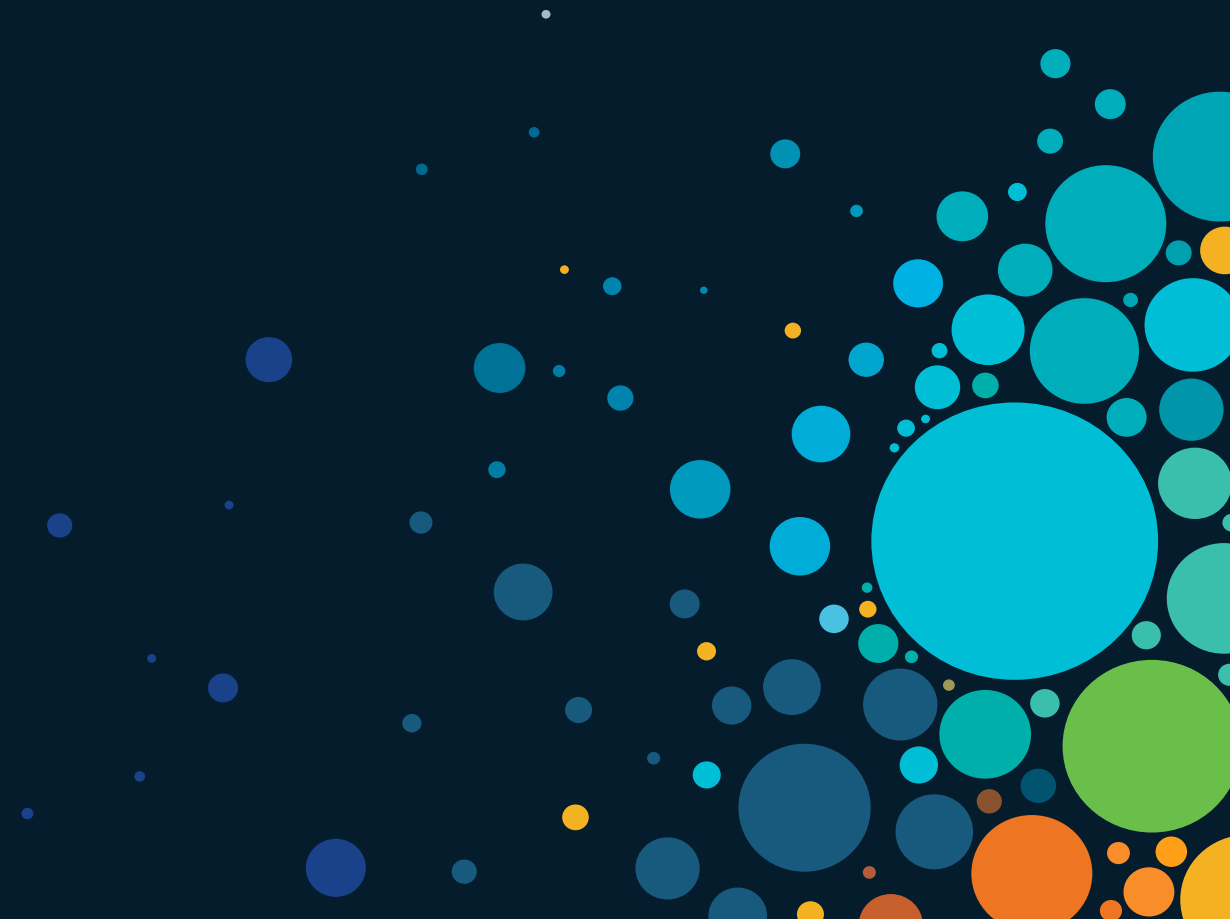




Agenda

- Industry trends and SASE
- Cisco+ Secure Connect Now
- Use Cases
- Capabilities and Architecture
- Demo Browser-based Access (ZTNA)
- Demo Remote Access
- Wrap-up & Call to Action

Introduction



Changes that led to SASE

Cloud revolution and hybrid work

Cloud applications exploded, but traffic was still routed through the central firewall at the data center.

Branch security was redesigned differently at each site, leading to inconsistent security policies.

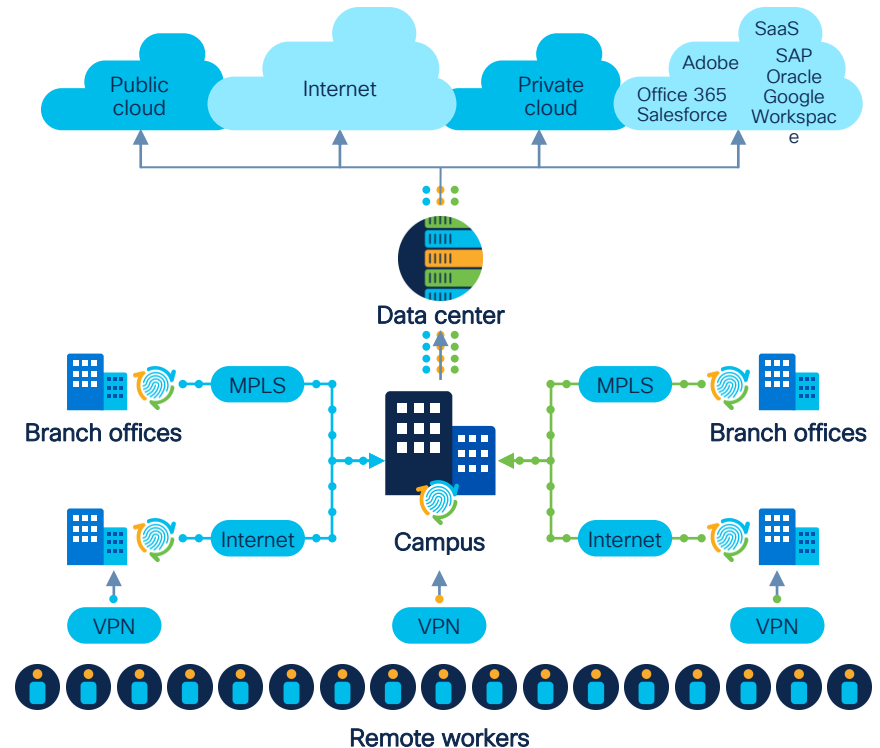
Remote workers connecting through regional VPNs introduced stress points, resulting in poor user experience.

45%



of business respondents cited **reliable network performance as the #1 challenge** for hybrid work adoption.¹

1: Gartner survey of 500 Enterprise businesses. Gartner Market Guide for Digital Experience Monitoring, August 2020



SASE is enabling a hybrid workforce model

SASE can provide **anywhere connectivity**, always-on **cloud security**, and an **improved worker experience** no matter where you work.

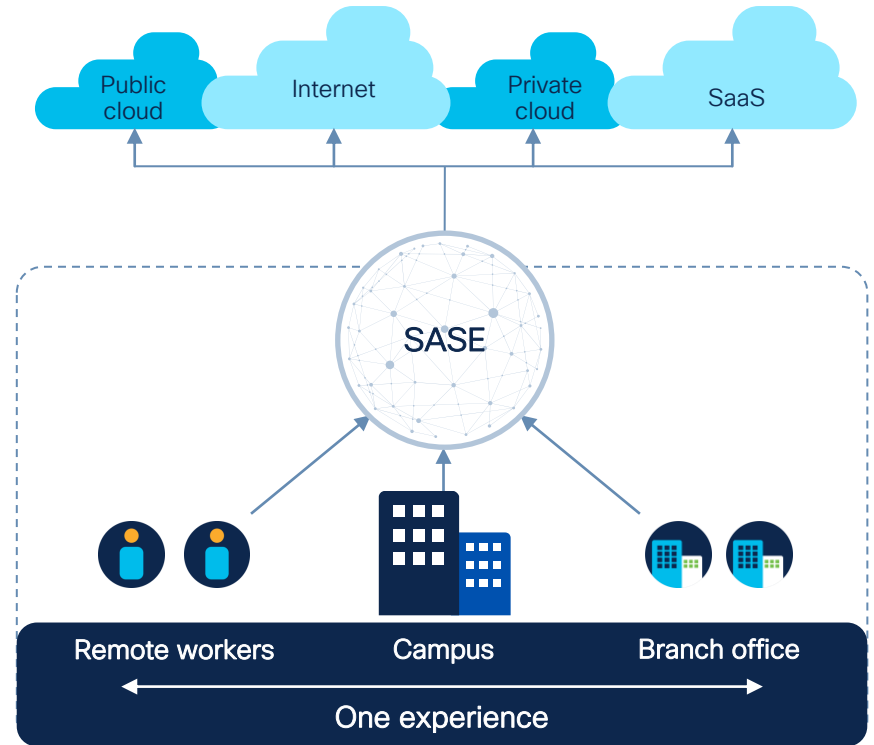
Cisco can provide a solution beyond SASE...

Ensure user endpoints are safe to connect to the network or operate offline

Meet or exceed application SLAs for the best in worker experience

Address the latest security threats with industry-leading Talos® intelligence

Have faster time to value of the newest technology innovations deployed effortlessly at the pace of your business



Cisco+ Secure Connect Now



Cisco+ Secure Connect Now

Speed and simplify your SASE with a Unified Solution

Securely connect people, applications and things from anywhere

Simple

Turn-key SASE solution with easy to onboard and consume as-a-service subscription

Secure

Protect every point of service, including those closest to threats - user, device, application

Intelligent

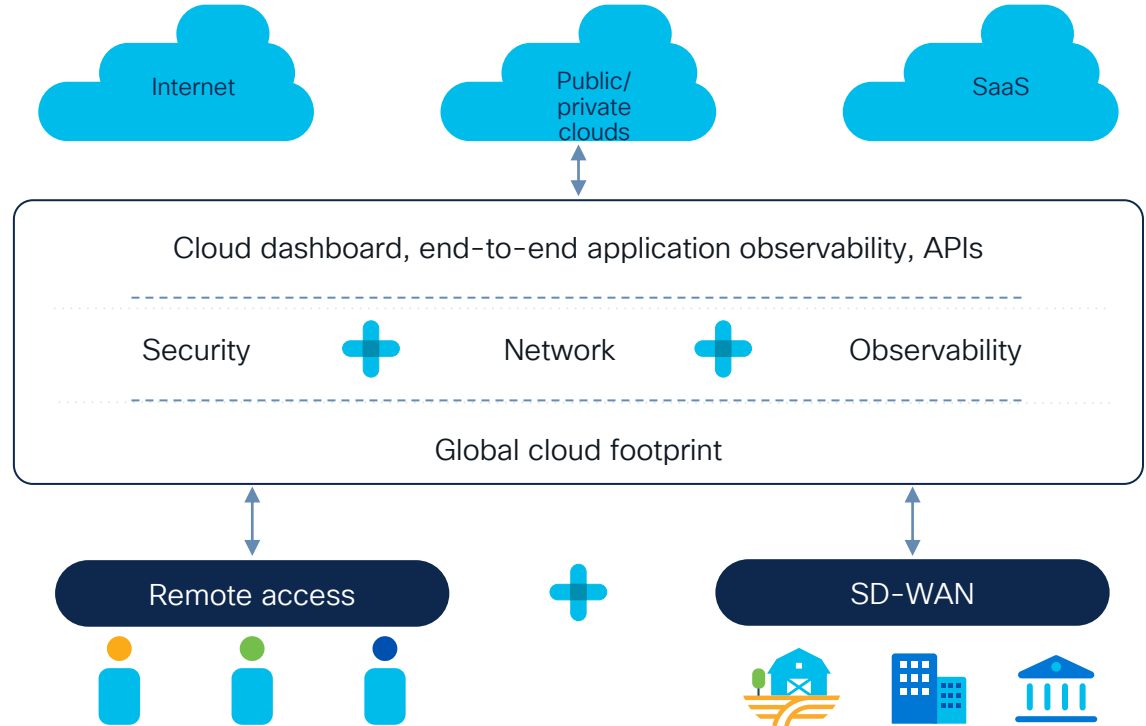
Translate insights into action to predict and remediate the application experience



Optimize your hybrid work experience with a unified turn-key SASE solution that is quick to deploy and easy to manage

Cisco+ Secure Connect Now delivers!

- Seamless, secure access to any application, from any device or location
- Single subscription adaptable to business needs
- Cloud-delivered, streamlined security and network capabilities with unified visibility
- Global cloud footprint with rock-solid reliability and lightning-fast performance
- Future: premium services and extensibility to full network-as-a-service stack



Cisco+ Secure Connect Now

Secure internet access

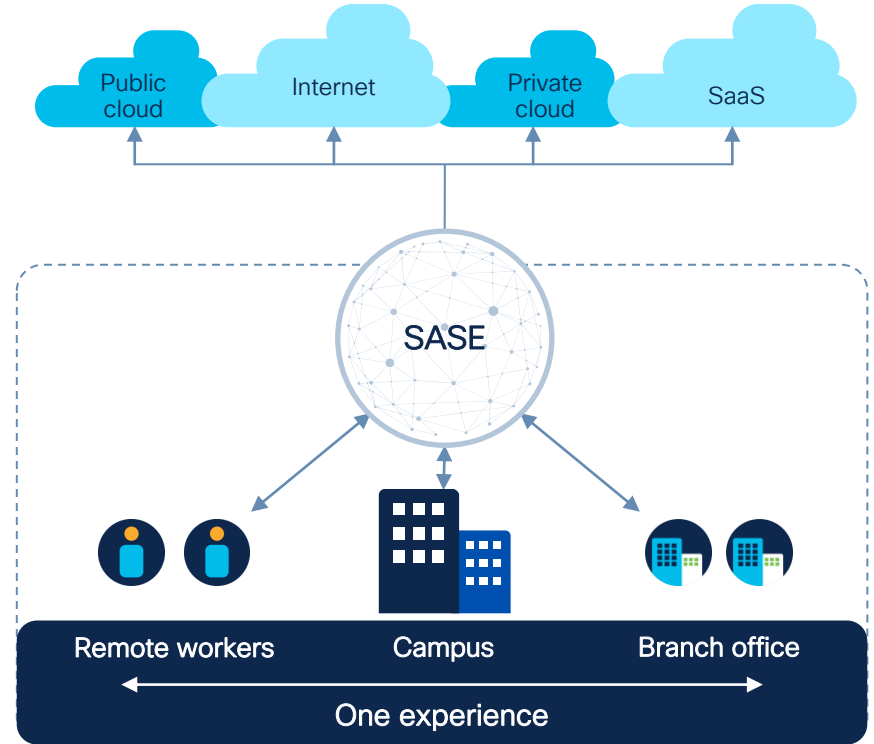
Provide users with safe access to the internet and cloud applications from any location and block malicious activity and threats

Secure private access

Deliver secure connections to company assets in private data centers or in the private cloud.

Interconnect

Dramatically simplify architecture and configuration by inherently interconnecting anything you connect to the SASE Fabric



Cisco+ Secure Connect Now

for a hybrid workforce



Enable a hybrid workforce with a turn-key solution for consistent access and user experience

Increase worker productivity with anywhere connectivity and improved application performance



Outcomes



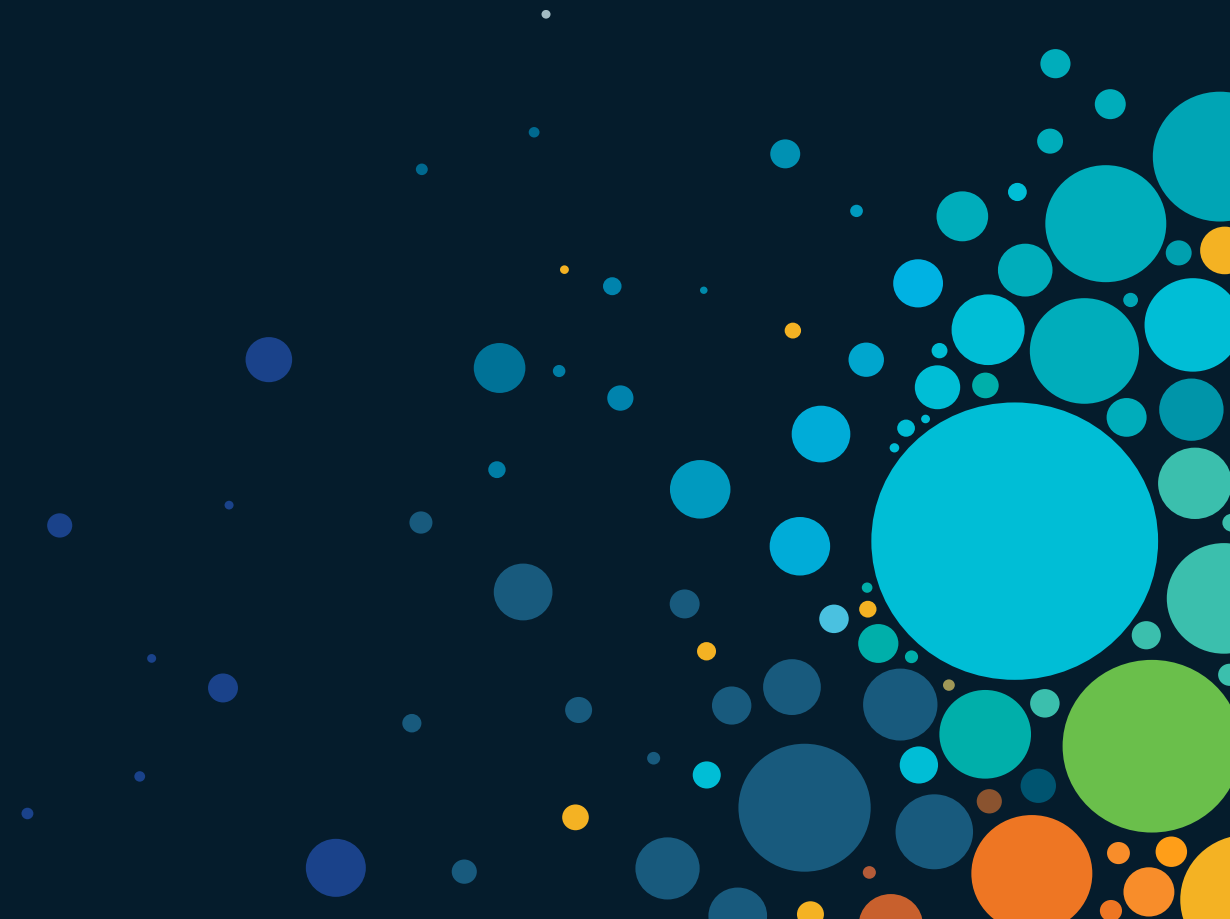
Lower overall IT spend with a simple consumption model and pay as you grow for SASE at your pace

Reduce security risk and maintain your **security compliance** requirements



What challenges do we face in achieving these outcomes?

Use cases

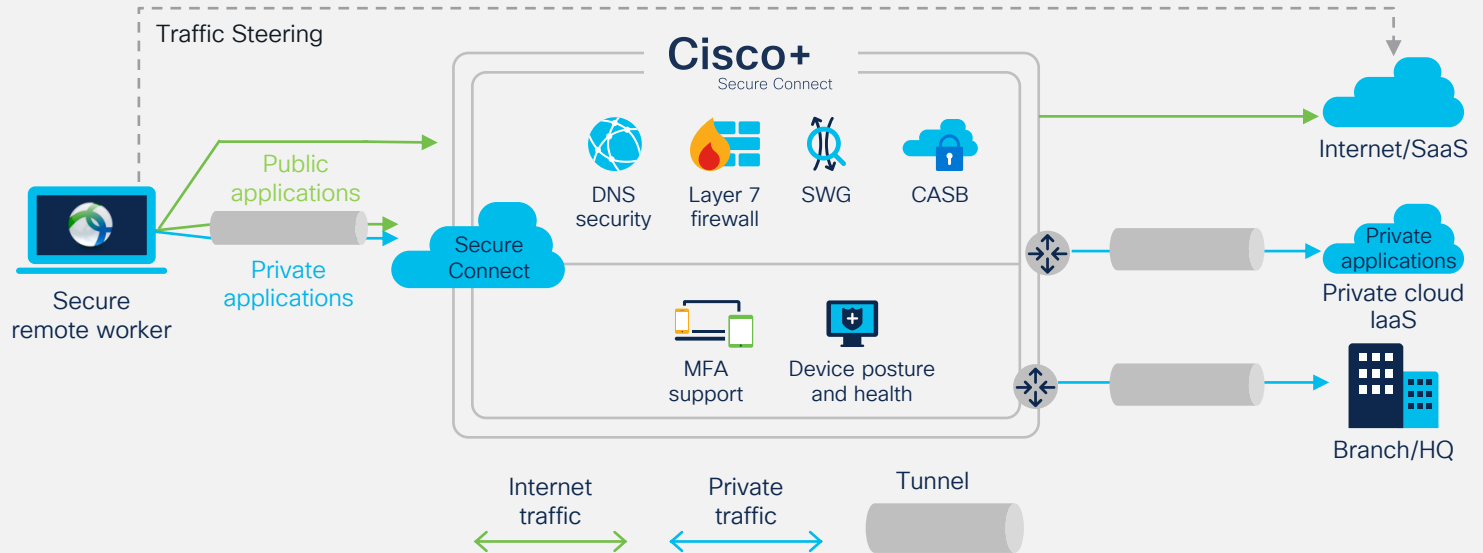


Cisco+ Secure Connect Now

Secure Remote Worker

Core elements

- Internet Security
 - DNS-Layer Sec
 - SWG Proxy
 - CASB
 - DLP
 - Cloud Firewall
- Private access
 - Device posture
 - SAML Auth
 - Access control



Browser-Based Access

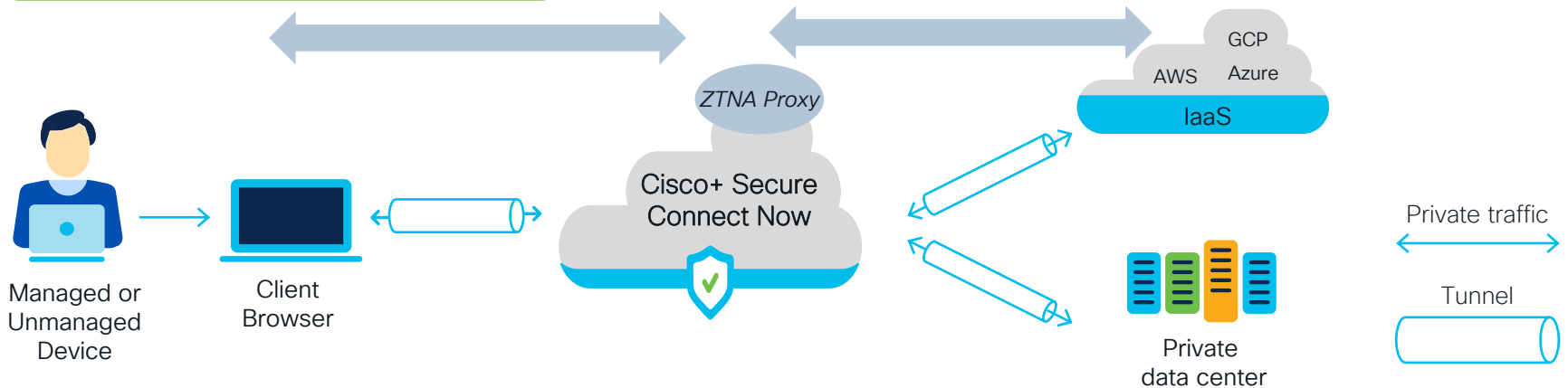
Clientless ZTNA connectivity

Simple Turnkey Solution:

- Frictionless end user experience
- Cisco provided certificates
- Auto-generated external FQDN

Least Privileged Access to Private Apps:

- User identity-based authentication
- Endpoint posture based authorization
- Application specific access policies



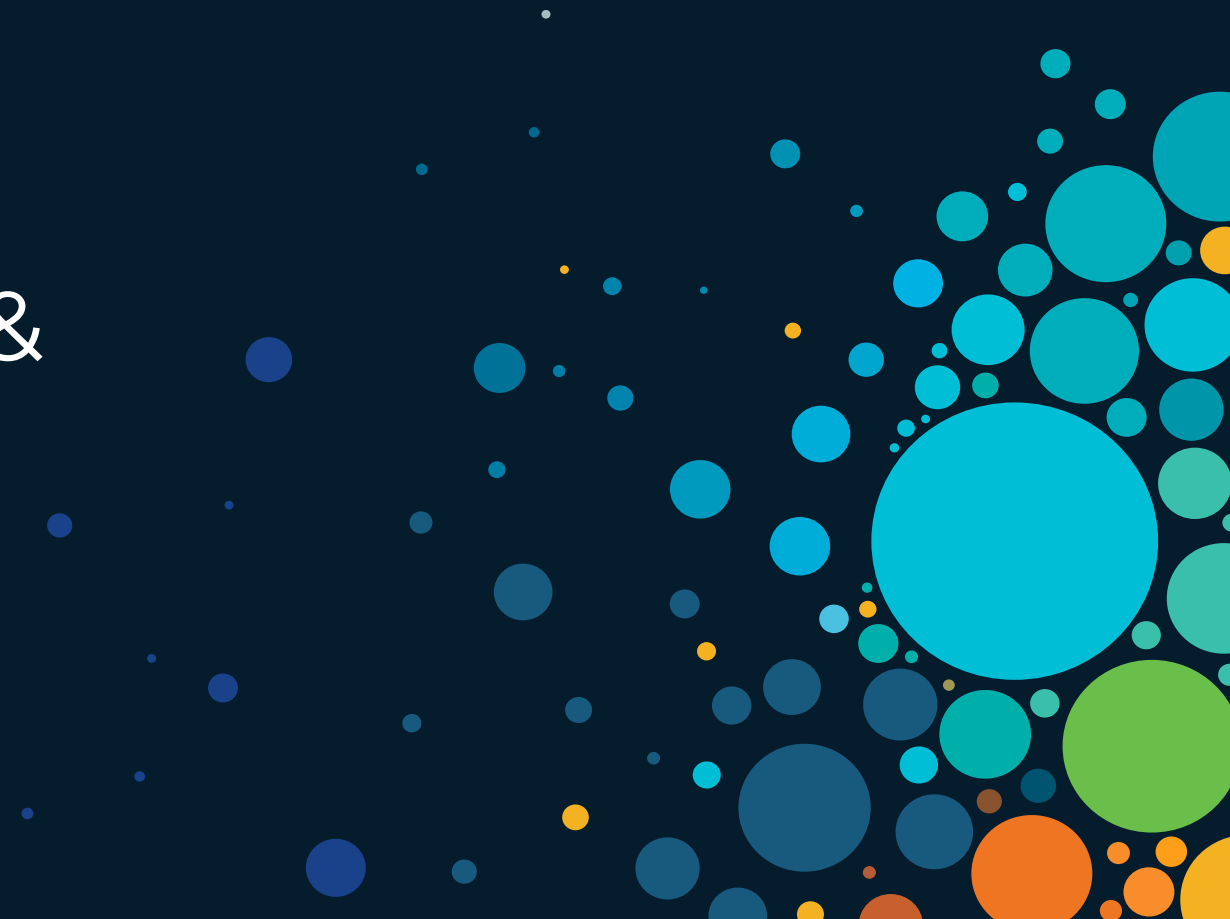
Identity & posture, access control

No client/agent required

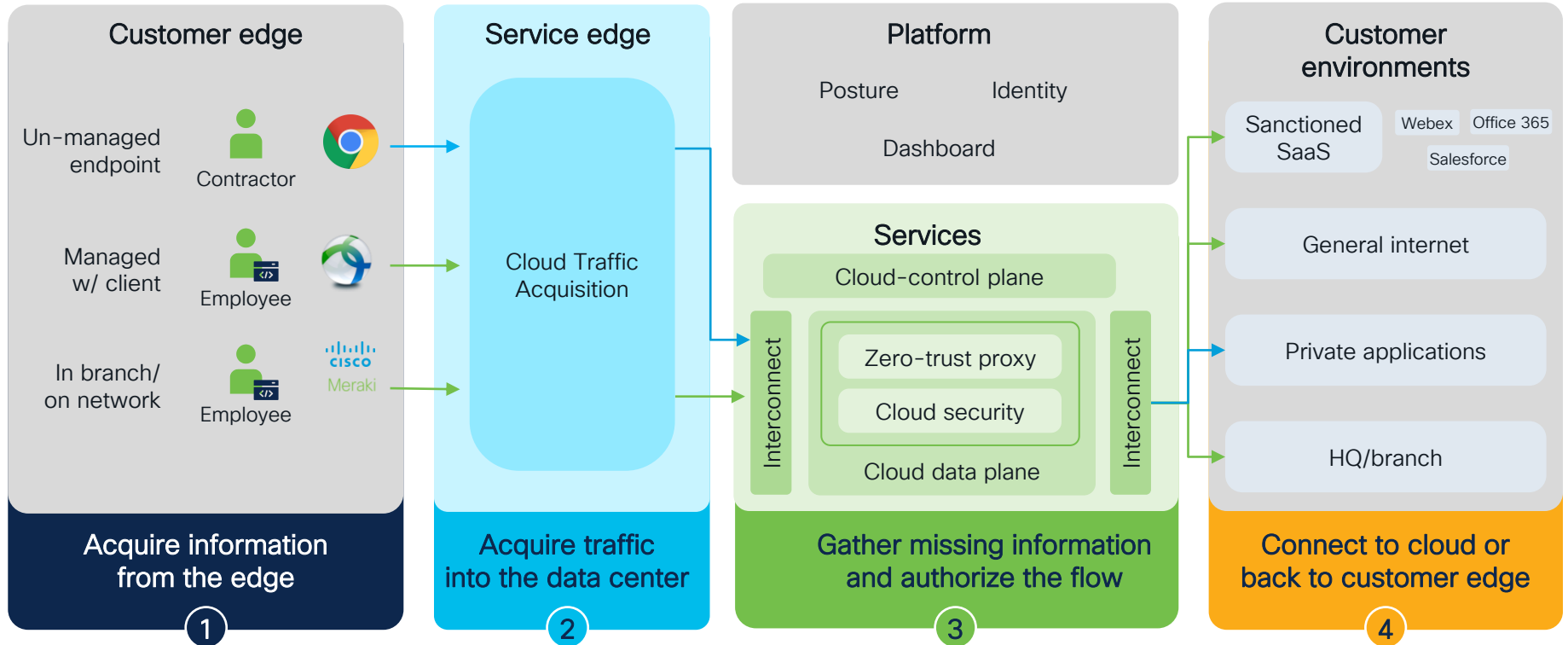
Certificate & DNS
Cisco managed

SAML authentication

Architecture & Capabilities



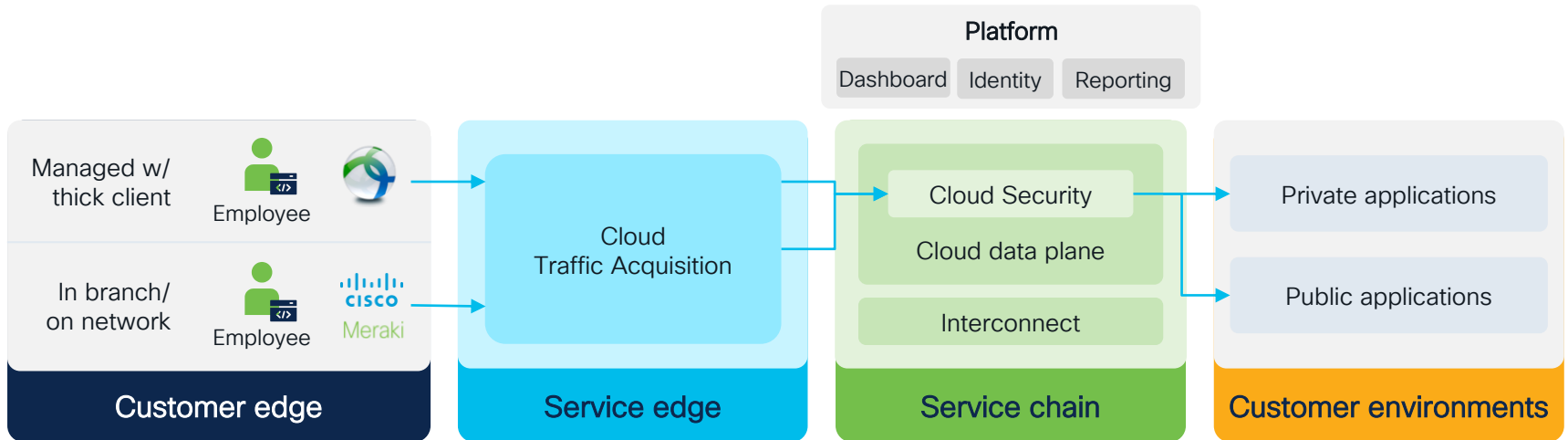
High-level architecture



Identity-based access control

Identity-based access control allows customers to

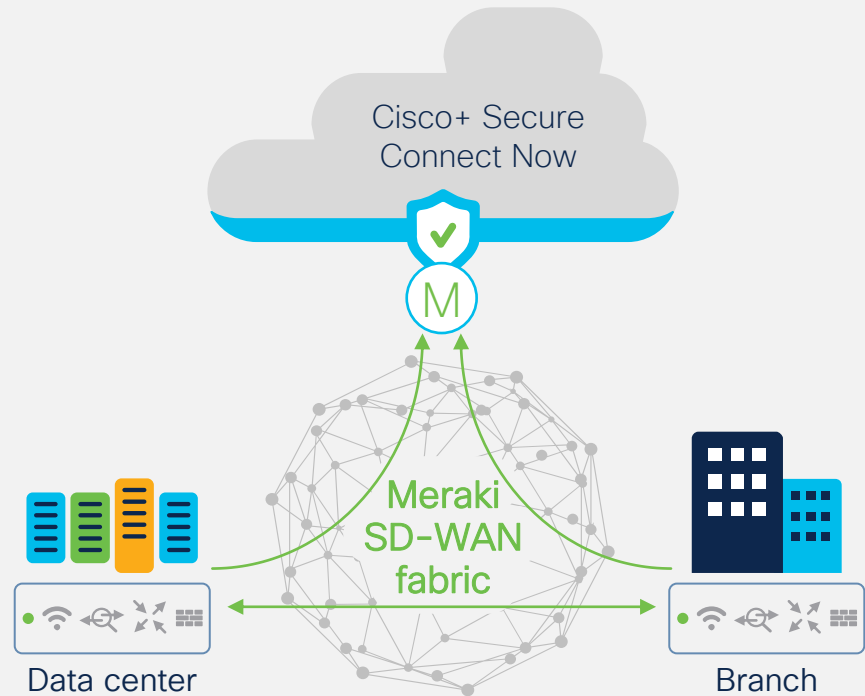
- Define and manage applications for use in access policies
- Control applications with access policies so only authorized users can access them
- Have identity-based access control for remote access users to public and private applications
- Have network IP-based access control for branch traffic to public and private applications



Meraki branch interconnect

Simple and easy setup to connect Meraki branches

- Meraki® SD-WAN direct connection to Secure Connect with Auto VPN
- Advanced security capabilities for branch sites
- High Availability via SD-WAN Fabric
- Private applications access by remote users via SD-WAN fabric
- Easy addition and removal of sites from Cisco+ Secure Connect Now



Edge Security Services

► Visit our website to learn more
www.cisco.com/go/secureconnect



Cisco+ Secure Connect Now



DNS-layer security



Secure web gateway



Cloud-delivered firewall (w/ IPS)



Cloud access security broker



Remote Access



Interactive threat intelligence



File Sandboxing



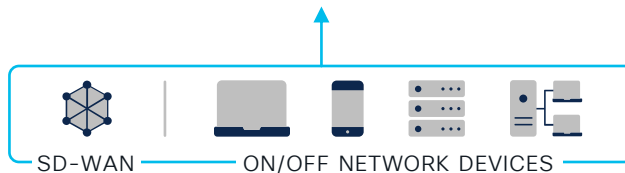
Data loss prevention



Cloud malware detection



ZTNA Browser-based access

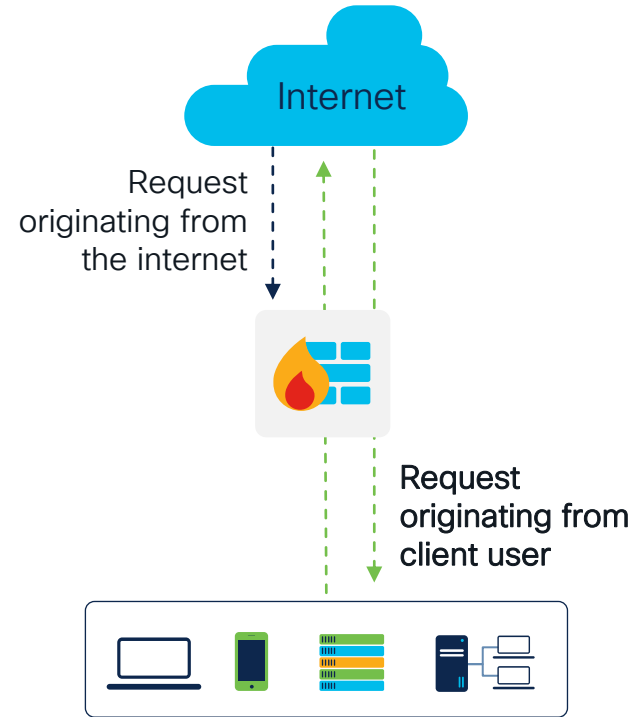


SecureX

Integrated security platform

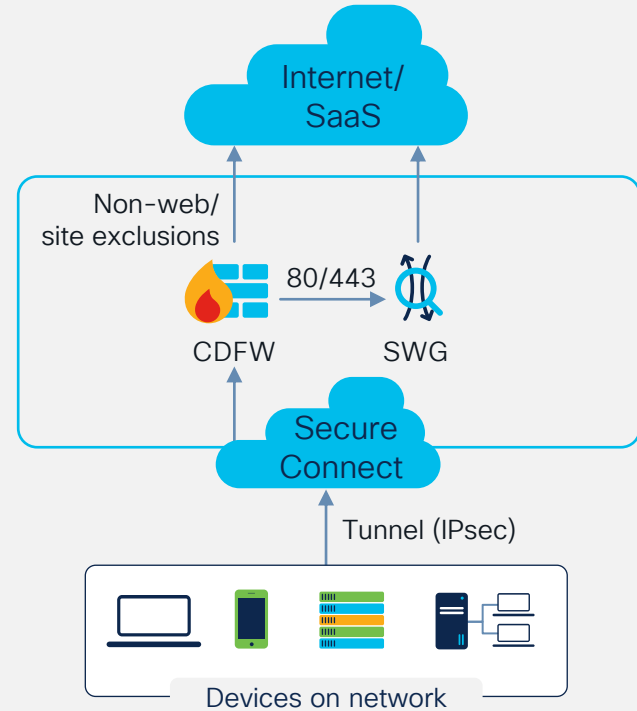
Outbound Layer 7 Cloud-delivered firewall

- Internet bound firewall for traffic filtering
- Globally distributed cloud firewall with a single cloud managed policy
- Layer 7 App visibility and rules (Control app usage)
- Cloud IPS powered by Snort



Layer 7 application visibility and control

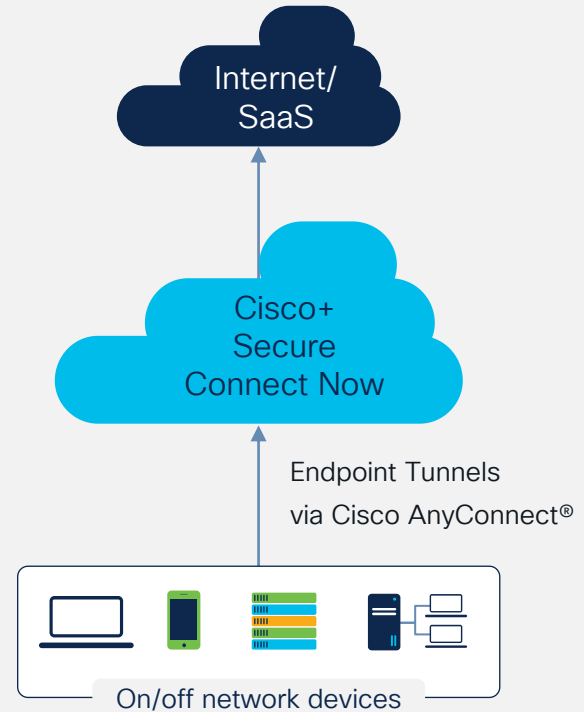
- Tunnel all client-driven traffic to Cisco+ Secure Connect
- Block high-risk applications and protocols (layer-7 application visibility and control)
- Centrally manage IP, port, protocol, and application rules (layers 3, 4, and 7 with Cisco IOS® IPS)
- Forward web traffic (ports 80/443) to secure web gateway
- Tunnel termination required



Secure web gateway (SWG)

Multiple functions and aggregated reporting

- Malware scanning includes two anti-virus engines and secure endpoint (Cisco® SD-WAN AMP) lookup
- File type controls
- Full or selective SSL decryption
- Category or URL filtering for content control
- Secure Malware Analytics (formerly Threat Grid) file sandboxing
- Application visibility and granular controls
- Full URL-level reporting



Content categories

- Apply policy to many sites
 - Content categories are used for “acceptable use policies”
 - Security categories are used for security policies
- Talos® categories are used for both content and security
- Over 100+ categories
- Dynamic cloud updates (full dataset)

Add New Content Setting

Setting Name
New Category Setting

This content list is applied to:
Web Policies

Copy From Existing
None

Categories [SELECT ALL](#)

<input type="checkbox"/> Academic Fraud	<input type="checkbox"/> Mobile Phones
<input type="checkbox"/> Adult	<input type="checkbox"/> Nature
<input type="checkbox"/> Advertisements	<input type="checkbox"/> News / Media
<input type="checkbox"/> Alcohol	<input type="checkbox"/> Non-Profits
<input type="checkbox"/> Arts	<input type="checkbox"/> Nudity
<input type="checkbox"/> Astrology	<input type="checkbox"/> Online Communities
<input type="checkbox"/> Auctions	<input type="checkbox"/> Online Meetings
<input type="checkbox"/> Automotive	<input type="checkbox"/> Online Trading

Inline data loss prevention

Cloud-native proxy DLP

Leverages SWG for connectivity, routing, and SSL decryption

Robust DLP classification

- 80+ built-in data classifiers
- Custom keywords

Flexible DLP policy

- Apply to specific identities and destinations with defined data classifications

Robust reporting

- Includes identity, file name, destination, classification, pattern match, excerpt, triggered rule, and more

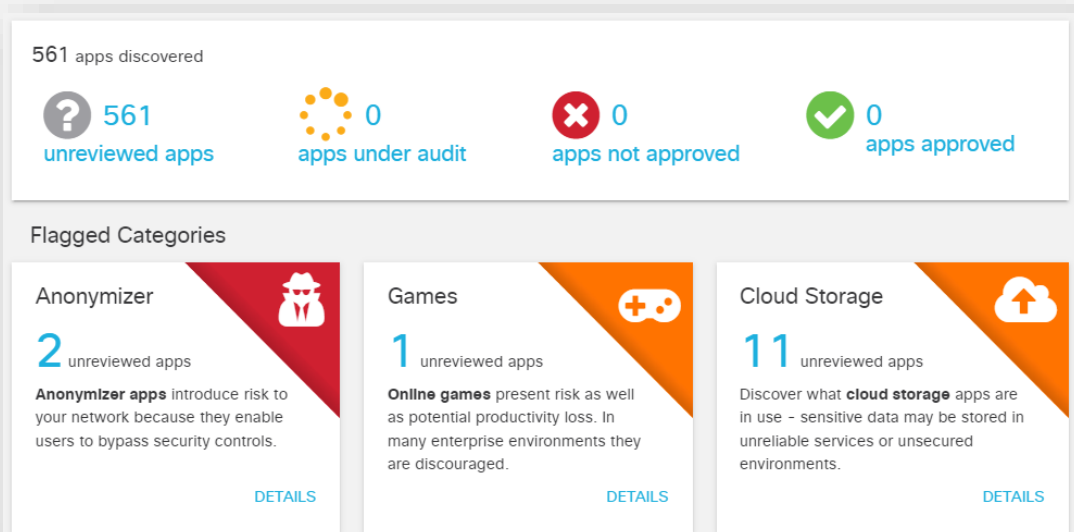
The screenshot shows the Cisco Umbrella 'Data Loss Prevention Policy' management page. At the top, it says 'Policies / Management' and 'Data Loss Prevention Policy'. Below this is a descriptive text: 'When enabled through its rules, the Data Loss Prevention policy can monitor or block data being uploaded to the web. Data to monitor and block is set through Umbrella's data classifications. For more information about the Data Loss Prevention policy, see Umbrella's [Help](#).' There is an 'ADD RULE' button on the right. Below the text, it indicates '4 Total Rules'. A table lists the rules with columns for Name, Severity, Action, Identity, Destination, Data Classification File Label, and Last Modified.

Name	Severity	Action	Identity	Destination	Data Classification File Label	Last Modified
Block Credit Card Uploads - ...	Low	Block	5 Identities	Inclusion 18 Applications	Data Classifications Credit Cards	Dec 29, 2021
Block SSN VB	Low	Block	1 Identity	Inclusion 18 Applications	Data Classifications social security	Oct 20, 2021

Application discovery and controls

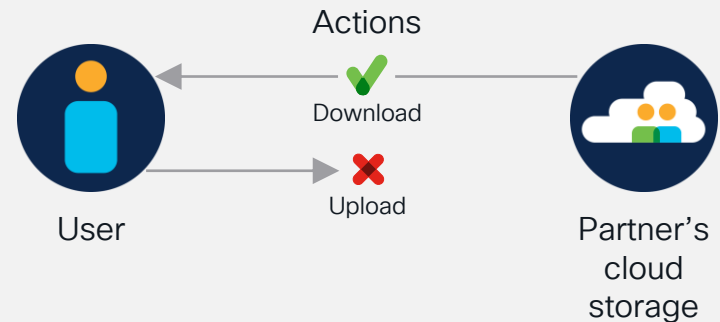
Visibility into shadow IT and control of cloud applications

- Full list of cloud applications in use
- Reports by category and risk level
- Number of users and amount of incoming and outgoing traffic
- Blocking of high-risk categories or individual applications



Granular controls for over 40 popular SaaS applications (CASB)

- **Block posts/shares** to social media applications
- **Block attachments** to webmail applications
- **Block uploads** to cloud storage, collaboration, office productivity, content management, and media applications



Box

Twitter

Dropbox

Pinterest

Messenger

Gmail

Facebook

LinkedIn

Slack

Instagram

Google
Drive

SlideShare

YouTube

Vimeo

WhatsApp

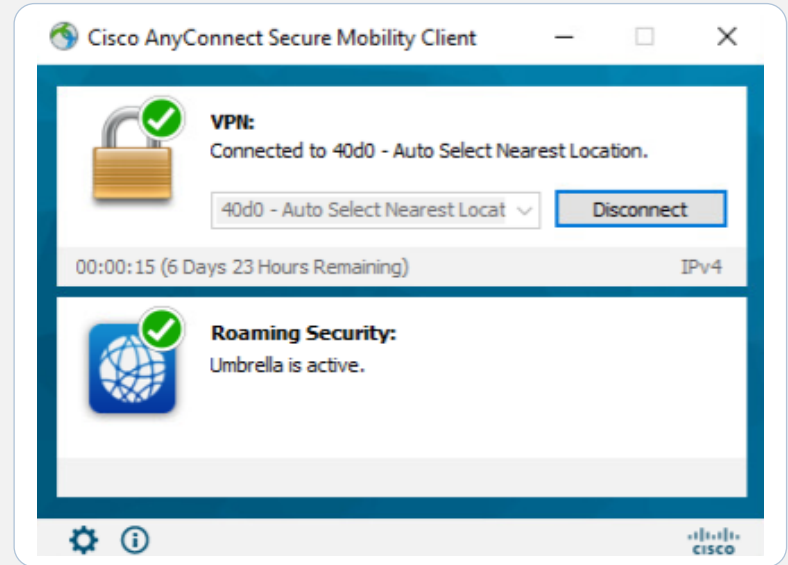
Smartsheet

Pastebin

Cisco AnyConnect (Cisco Secure Client)

Entitlement is included for use with subscription

- Cisco AnyConnect® can be used across an entire enterprise.
- Both remote access and secure web gateway services coexist.
- Protect assets on or off network.
- Roaming security offers always on protection (Web & DNS)
- OS Support: Win, MacOS, Linux, iOS, Android*



* Roaming security module support limited to Win and MacOS

Cisco Secure Client – Coming Soon

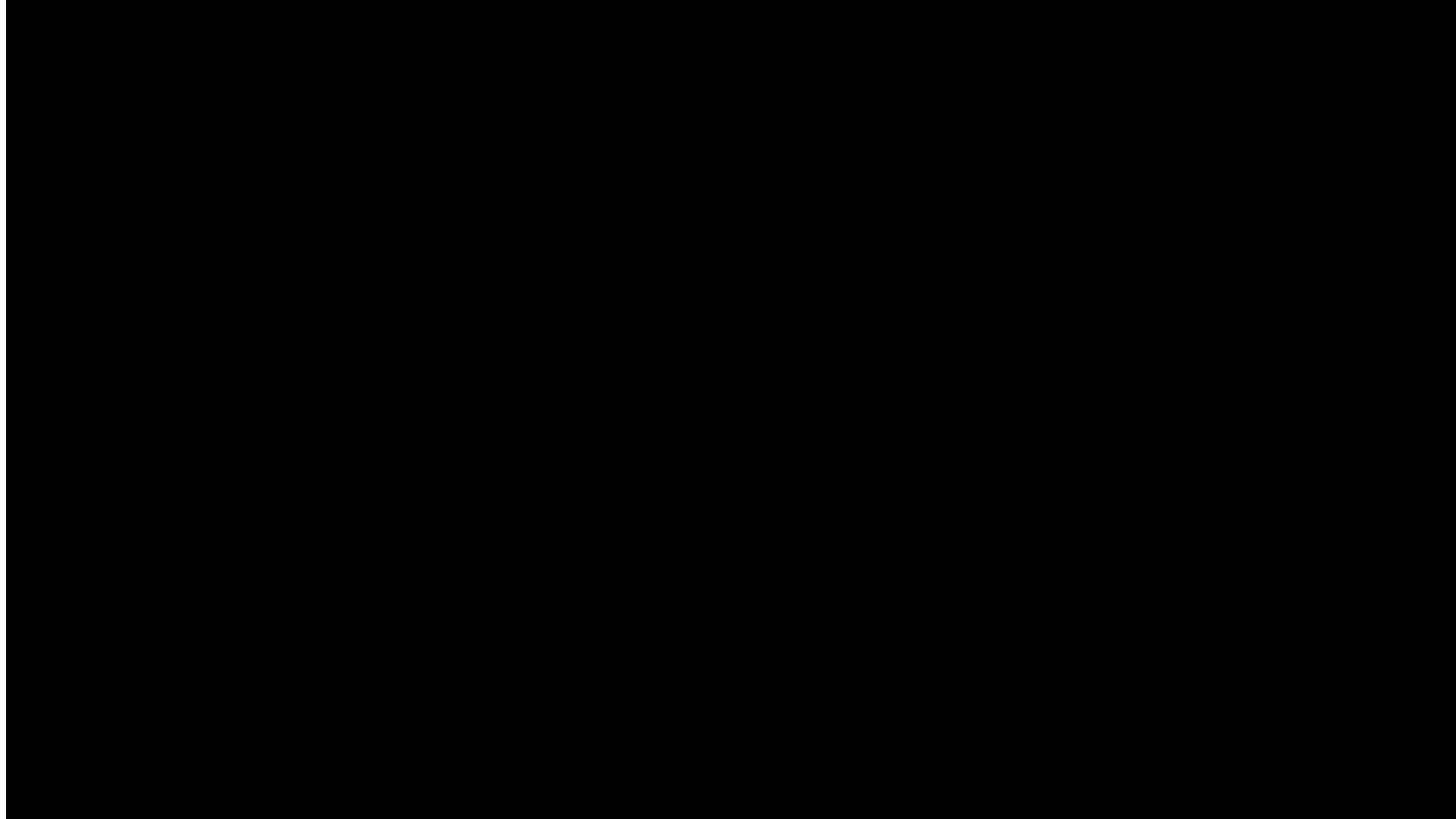
- Cloud Managed Endpoint
- Unified client AnyConnect + AMP4E
- Group based endpoint policies
- Included with Cisco+ Secure Connect Now

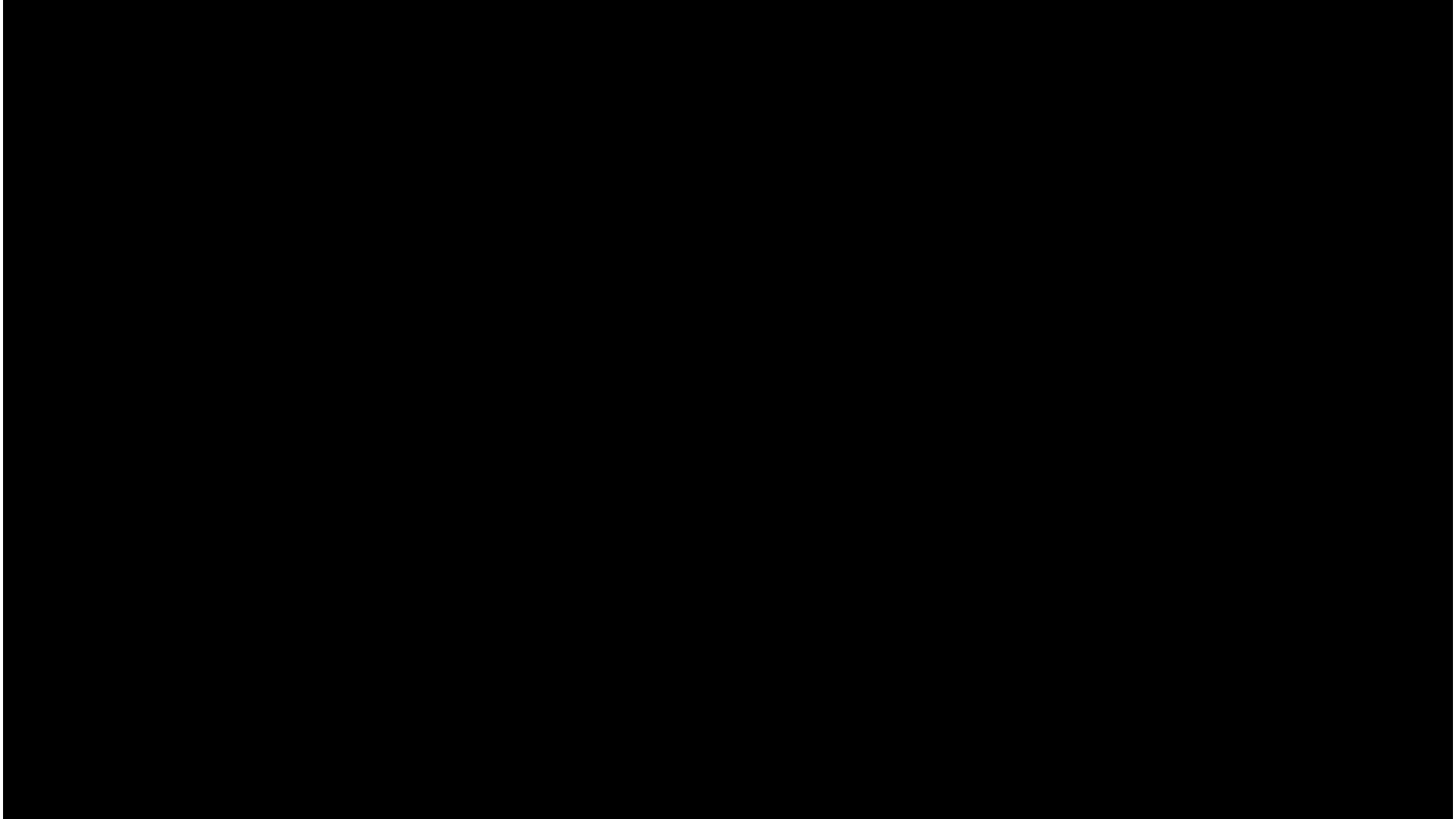
The screenshot displays the Cisco SecureX web interface, specifically the 'Deployment Management' section. The top navigation bar includes 'Dashboard', 'Integration Modules', 'Orchestration', 'Insights', and 'Administration'. The left sidebar lists various management areas: 'Device Insights', 'Inventory Overview', 'Sources', 'Source Settings', 'Secure Client', 'Deployment Management' (highlighted), 'Audit Logs', 'Profiles', 'Cloud Management', 'Customer Experience Feedb...', 'ISE Posture', 'Local Policy', 'Network Access Manager', 'Network Visibility Module', 'Umbrella', 'VPN', 'VPN Management Tunnel', and 'Device Events'. The main content area is titled 'Deployment Management' and features a '+ Create New' button. Below this, there are two dropdown menus for IP addresses: '1.0.1.389' and '8.0.1.21083'. A 'Cloud Management' section includes a 'Create Profile' button. The bottom section contains several toggle switches and 'Create Profile' buttons for: 'AnyConnect VPN', 'Start Before Logon', 'Umbrella', 'Diagnostics and Reporting Tool', 'ISE Posture', 'Secure Firewall Posture', 'Network Access Manager', and 'Network Visibility Module'.

Demo: Browser-based access (ZTNA)

Recorded Demos Links

- Recorded demos with narration are available on my blog at www.ericeddy.blog





Demo: Remote Access

Map Satellite Address, zip code, etc. Go

Networks

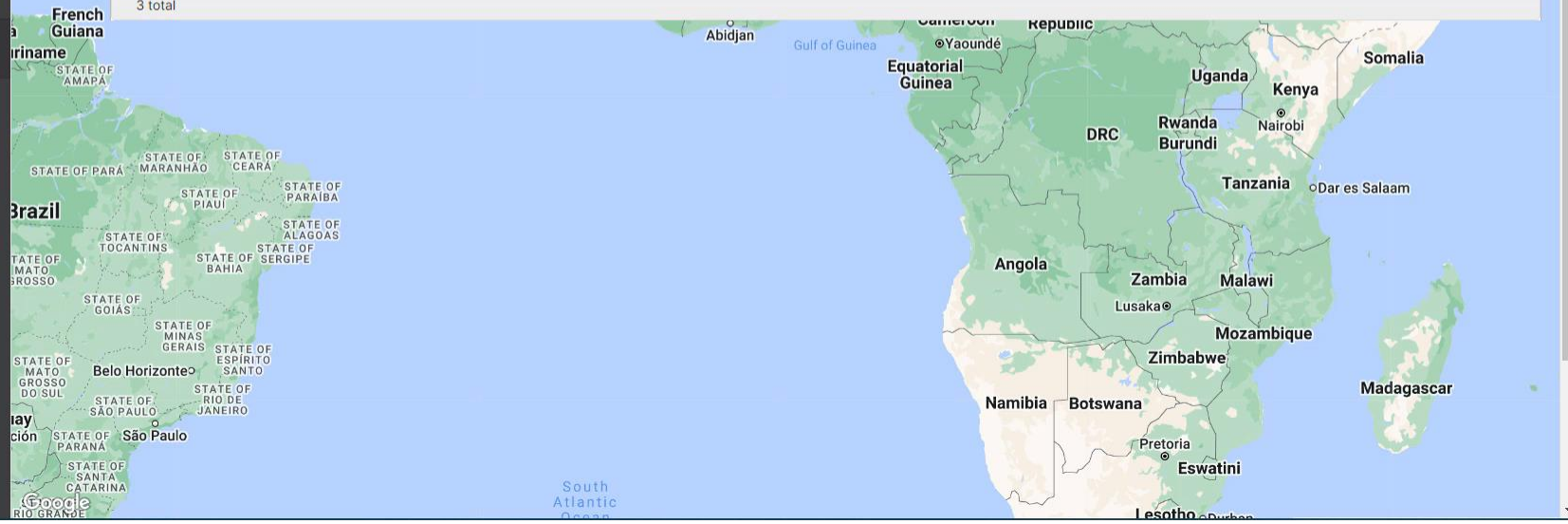
Network tags Devices

Tag Combine Delete Search... 3 networks Over the last week: 1 client, 1.3 MB CSV +

<input type="checkbox"/>	Name	Usage	Clients	Tags	Network type	Devices	Offline devices
<input type="checkbox"/>	Azure Branch	None	0		Appliance	1	0
<input type="checkbox"/>	Cloud Hub-London	1.3 MB	1		Appliance	1	0
<input type="checkbox"/>	Cloud Hub-Frankfurt	None	0		Appliance	1	0

3 total

- ORGANIZATION
- SCDemoTME2
- NETWORK
- Azure Branch
- Network-wide
- Security & SD-WAN
- Organization
- Secure Connect



Wrap up & Call to Action

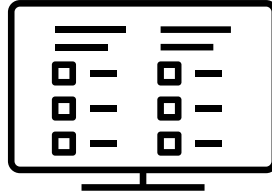


Summary Cisco+ Secure Connect Now

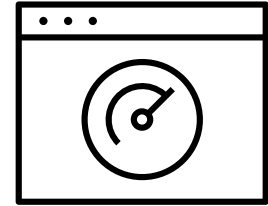
A unified, turn-key SASE solution for driving better IT outcomes



Broad security controls:
ZTNA, RA-VPN, SWG & DLP



Simplified & centralized
visibility and management



Unified networking & Security
with traffic optimization

Complete SASE solution in a single subscription

The Cisco advantage

Cisco+ Secure Connect Now



Easy to consume



Fast deployment,
simple management



Uncompromised
user and administrator
experience



Best security
protection

Only Cisco leads in bringing together security and networking through a unified approach that empowers businesses to easily and securely connect users and things to applications.

Call to Action



Visit the Cisco SASE Showcase for additional demos.



Talk to your sales rep about a proof of value



Come ask me questions and speak with our UX team



Visit the product page at www.cisco.com/go/secureconnect

Technical Session Surveys

- Attendees who fill out a minimum of four session surveys and the overall event survey will get Cisco Live branded socks!
- Attendees will also earn 100 points in the Cisco Live Game for every survey completed.
- These points help you get on the leaderboard and increase your chances of winning daily and grand prizes.



Cisco Learning and Certifications

From technology training and team development to Cisco certifications and learning plans, let us help you empower your business and career. www.cisco.com/go/certs

Pay for Learning with Cisco Learning Credits

(CLCs) are prepaid training vouchers redeemed directly with Cisco.

Learn



Cisco U.

IT learning hub that guides teams and learners toward their goals

Cisco Digital Learning

Subscription-based product, technology, and certification training

Cisco Modeling Labs

Network simulation platform for design, testing, and troubleshooting

Cisco Learning Network

Resource community portal for certifications and learning



Train

Cisco Training Bootcamps

Intensive team & individual automation and technology training programs

Cisco Learning Partner Program

Authorized training partners supporting Cisco technology and career certifications

Cisco Instructor-led and Virtual Instructor-led training

Accelerated curriculum of product, technology, and certification courses



Certify

Cisco Certifications and Specialist Certifications

Award-winning certification program empowers students and IT Professionals to advance their technical careers

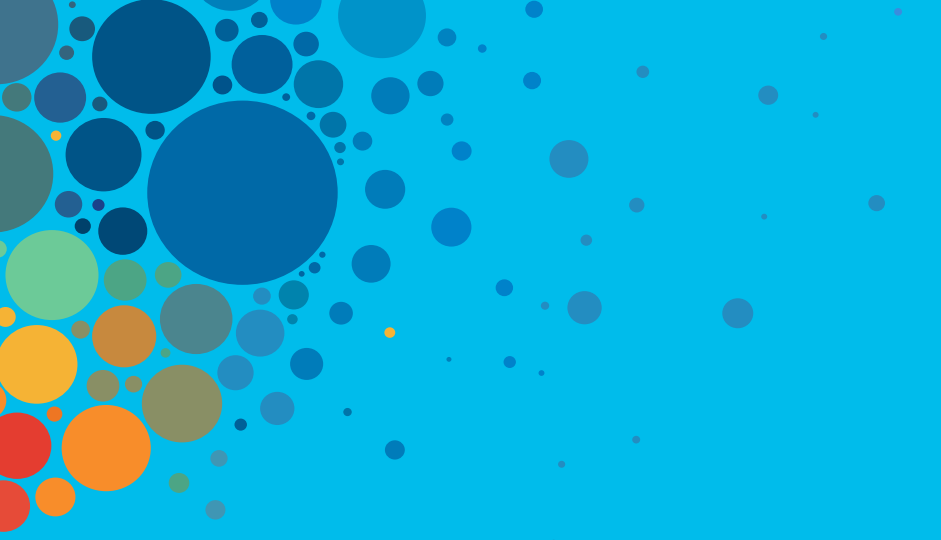
Cisco Guided Study Groups

180-day certification prep program with learning and support

Cisco Continuing Education Program

Recertification training options for Cisco certified individuals

Here at the event? Visit us at **The Learning and Certifications lounge at the World of Solutions**



Continue your education

- Visit the Cisco Showcase for related demos
- Book your one-on-one Meet the Engineer meeting
- Attend the interactive education with DevNet, Capture the Flag, and Walk-in Labs
- Visit the On-Demand Library for more sessions at www.CiscoLive.com/on-demand



The bridge to possible

Thank you

CISCO *Live!*

#CiscoLive

CISCO *Live!*

ALL IN

#CiscoLive