

CISCO *Live!*



#CiscoLive



The bridge to possible

Eliminate Congestion Surprises and Fire Drills Forever with Crosswork Cloud

Traffic Analysis as a Service

Dan Backman, Principal Engineer, MIG Architecture
BRKSPG-2250



#CiscoLive

Cisco Webex App

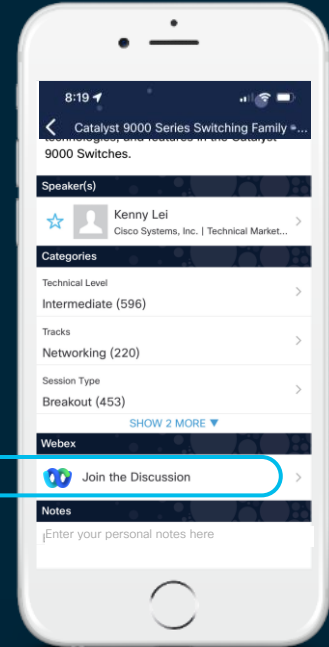
Questions?

Use Cisco Webex App to chat with the speaker after the session

How

- 1 Find this session in the Cisco Live Mobile App
- 2 Click “Join the Discussion”
- 3 Install the Webex App or go directly to the Webex space
- 4 Enter messages/questions in the Webex space

Webex spaces will be moderated by the speaker until June 17, 2022.



<https://ciscolive.ciscoevents.com/ciscolivebot/#BRKSPG-2250>



Agenda

- Cloud as a new services platform
- Network Insights BGP monitoring
- Traffic Analysis as-a-Service
- Cloud-to-Ground: Data Gateway
- Trust Insights and XR Operational Intelligence
- Conclusion



Automation vision

Automate processes by bringing together visibility, insights and actions in a closed loop



Visibility

Verify and monitor customer experience



Insights

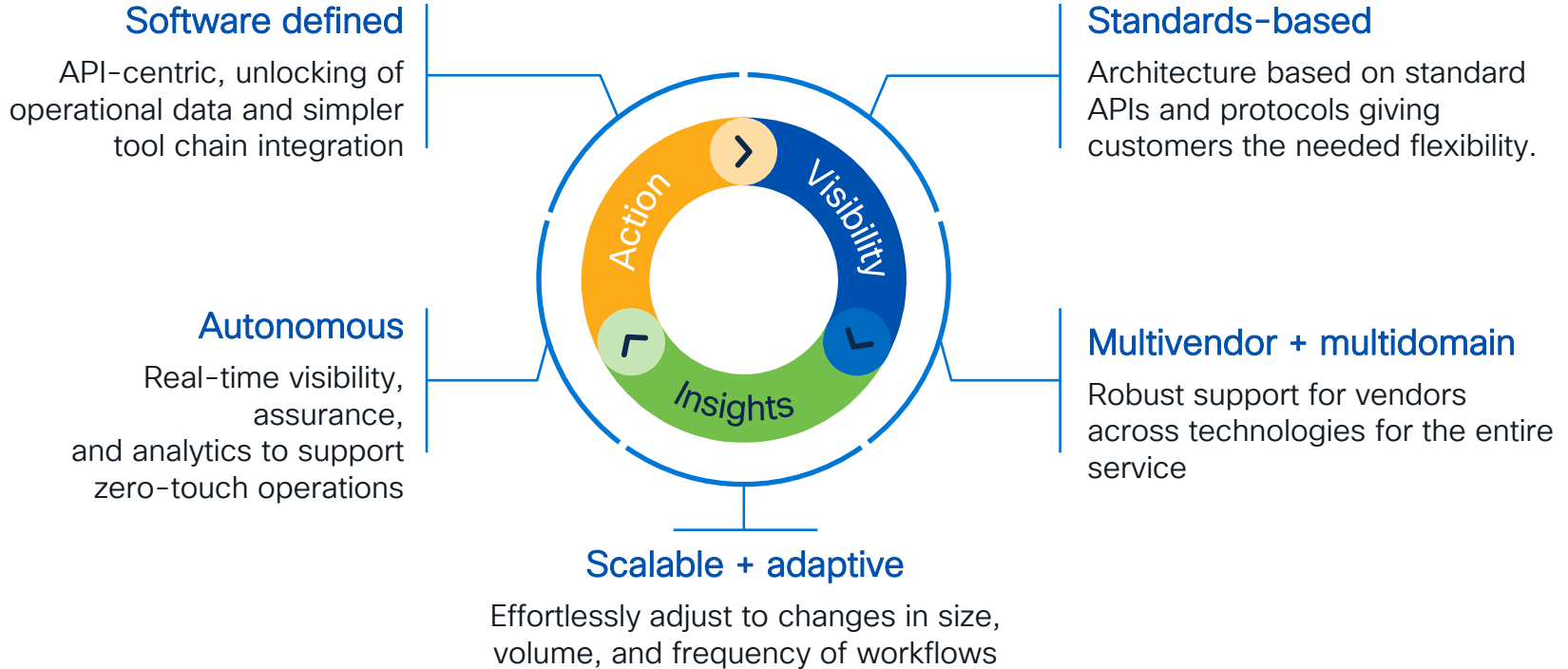
Correlate data, identify trends and patterns



Action

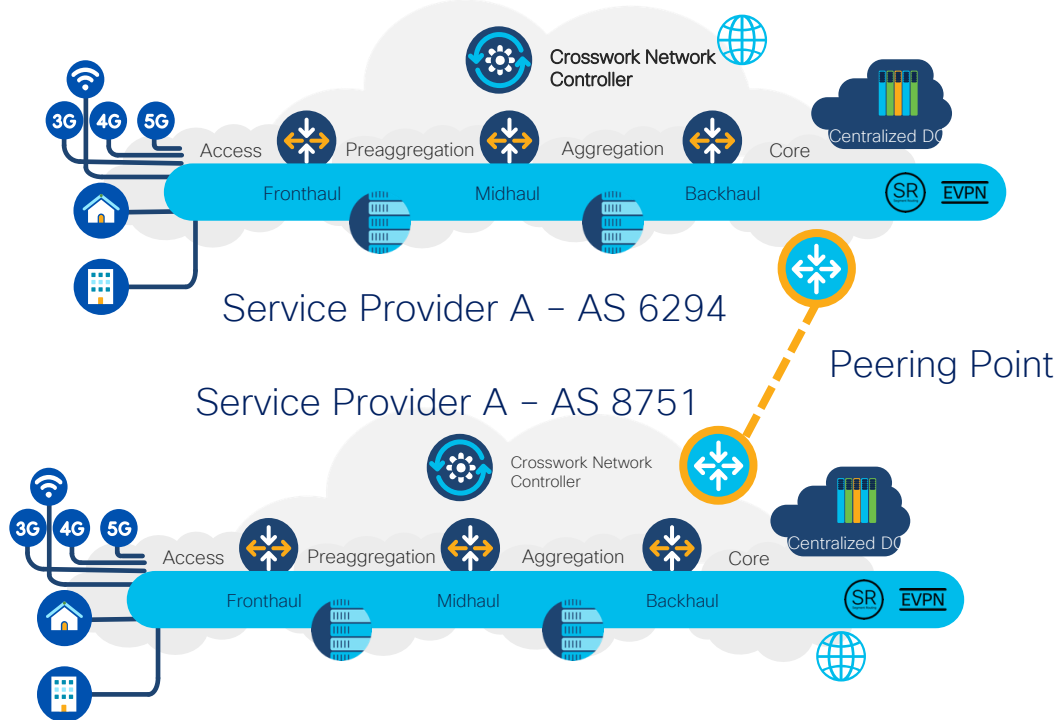
Automate processes to drive agility

Tenets of Cisco Crosswork Automation



Crosswork Cloud – Traffic Analysis

- What's the challenge?



Business Outcomes

Improve Customer Experience
Peering recommendations to improve traffic
Identify hijacks & route leaks

Increase Provider Profitability
Dashboard of my top talkers
Identify remediations before issues occur

Operational Simplicity
Analytics translation into automatable actions
Visibility of network that's easy to understand

Operational Intelligence as a Service



Cloud SaaS: Always-On, Immediate Time-to-Value, Always Advancing



No software to deploy and maintain



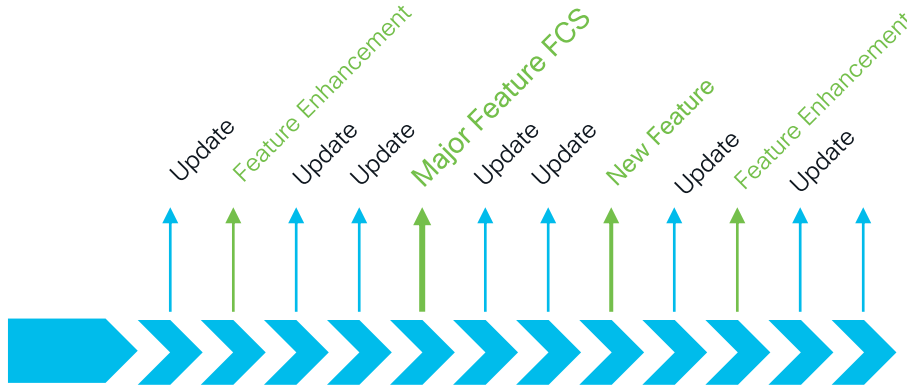
Cloud Scale and scale-out CDG for on-prem support



Reduced Operational Cost and Seamless Scalability



A new way to consume software as a service

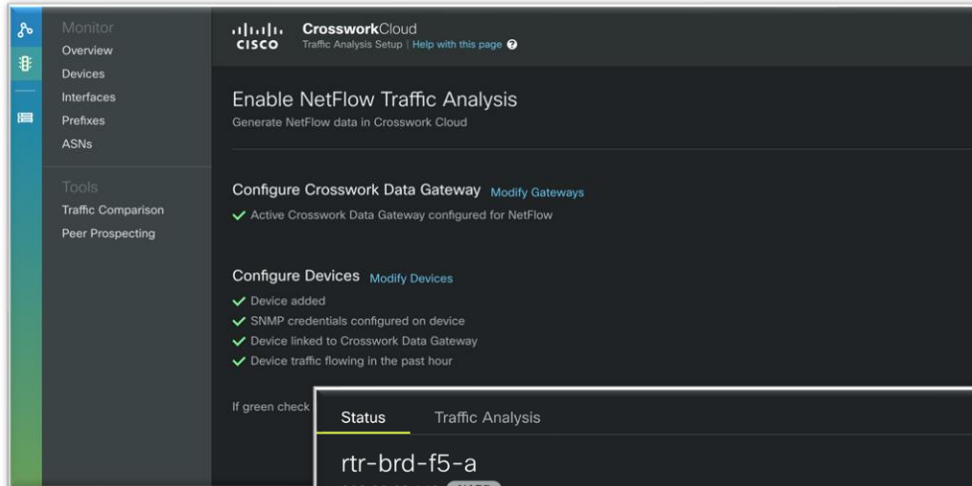


Continuous delivery of new features and software updates to the production cloud service.

No user testing or software maintenance required.

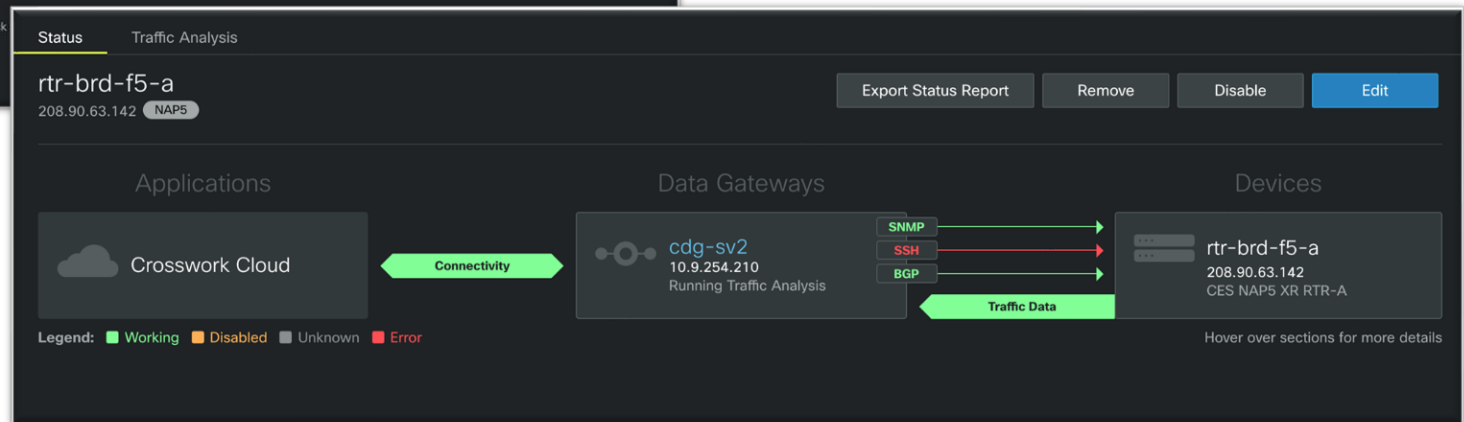
- Software delivered and maintained by Cisco
- Continuous (Weekly) delivery pipeline to production service
- Continuous pipeline for new features and fixes
- No customer action required for ongoing maintenance or upgrades

Designed for Ease of Use and Supportability



Designed for fast time-to-value

- Self-Guided Deployment
- Built-in connectivity diagnostics



ABCs of Crosswork Cloud: AS monitoring, Border Netflow Analytics, Compliance

Key Points

- SaaS Delivered
- Immediate Deployment
- Always up-to-date
- Minimal Support OpEx
- Weekly Updates
- Dynamic Scalable Workloads
- Continuous New Features
- Task & Process Automation
- Focus on Analytics
- Give Answers not Questions

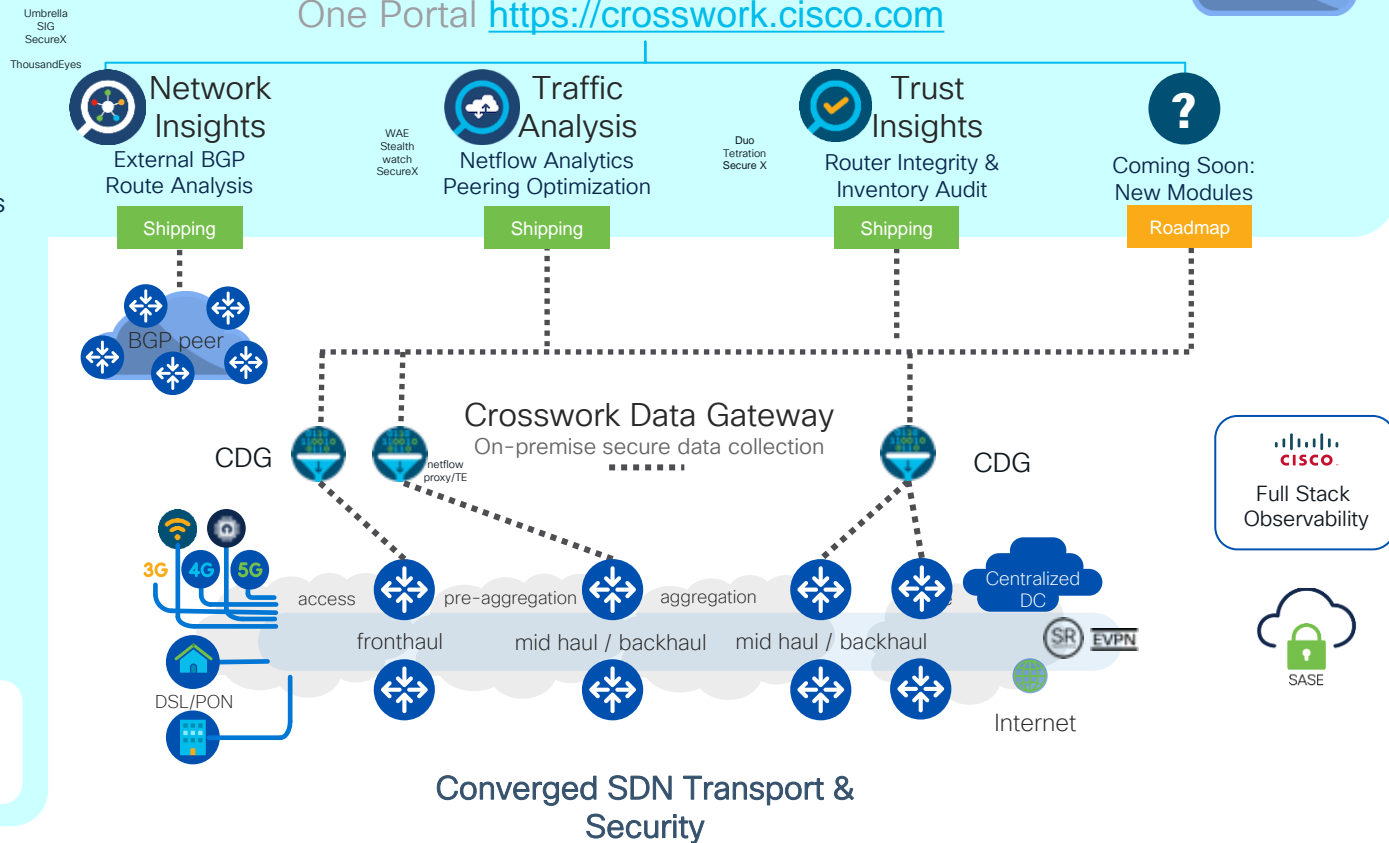
Operational Intelligence

- Multivendor & Multidomain
- Multiplatform Traffic Analytics
- Network security focused
- IOS XR7 device posturing
- REST API integration

Integrated Collaboration tools



One Portal <https://crosswork.cisco.com>



Network Insights External BGP Analysis

Network Insights monitors hundreds of peers world-wide



Using Network Insights

- (Always-On) Continuous monitoring and alerting for your BGP advertisements
 - Define policies to automatically alert on unexpected changes or anomalies
 - Detect common BGP issues: route leaks, prefix hijack events, withdrawals
- (Right now) Global BGP Looking Glass
 - Global view of how your BGP advertisements are received
 - Consolidated view of all global looking-glasses
- (History) BGP Update Log (Global BGP History)
 - Forensic view of all observed BGP updates with history

Crosswork Network Insights – Route Analysis

Unlimited Peer
Route Tracking

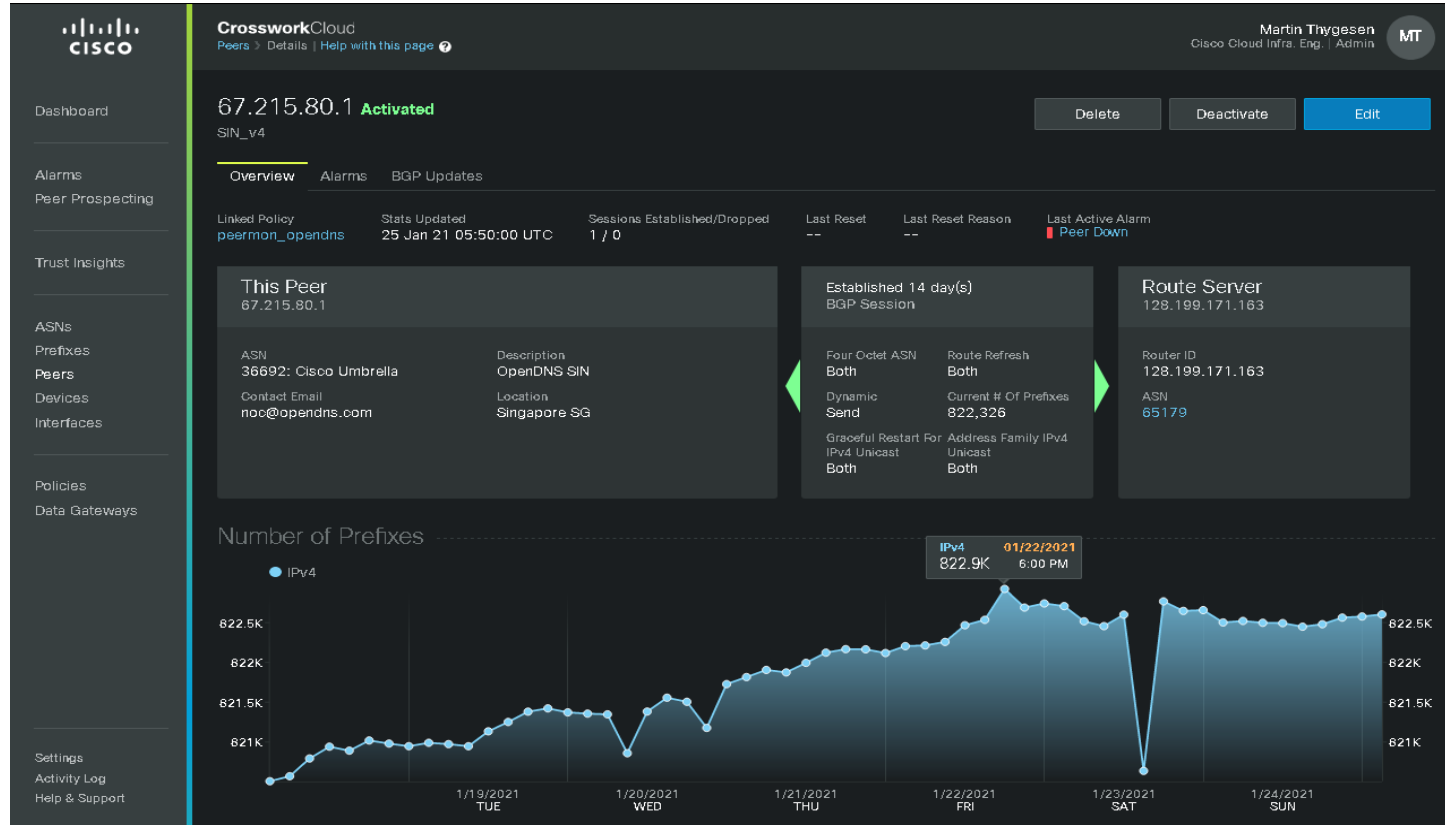
Peer Alarms

A large routing
sensor network

Correlate BGP
with other events

Free Access

Paid monitoring
options



Crosswork Network Insights – Route Analysis

3 months of
Route Updates
history

Peer ID
Information kept
private

No cost views
of what your
routers are
advertising



Dashboard

Alarms

Peer Prospecting

Trust Insights

ASNs

Prefixes

Peers

Devices

Interfaces

Policies

Data Gateways

Settings

Activity Log

Help & Support

CrossworkCloud

Peers > Details | Help with this page

Martin Thygesen
Cisco Cloud Infra. Eng. | Admin

MT

67.215.80.1 **Activated**

SIN_v4

Delete Deactivate Edit

Overview Alarms **BGP Updates**

Time Range
25 Jan 21 05:03 UTC – 25 Jan 21 06:03 UTC

Peer AS	Prefix	AS Path	Communities	Update Type	Last Updated	
36692	185.175.100.0/24	36692 ◀ 4637 ◀ 47562	4637:500 4637:30024 4637:303	Add	25 Jan 21 06:00:00 UTC	1
36692	103.94.12.0/22	36692 ◀ 2914 ◀ 6453 ◀ 4538 ◀ 131578	2914:420 2914:1405 2914:2406	Add	25 Jan 21 06:00:00 UTC	2
36692	99.194.200.0/22	36692 ◀ 2914 ◀ 3356 ◀ 209 ◀ 22561	2914:420 2914:1405 2914:2406	Add	25 Jan 21 05:59:58 UTC	3
36692	41.202.229.0/24	36692 ◀ 3257 ◀ 174 ◀ 16637 ◀ 20294 ◀ 36991	3257:8029 3257:8856 3257:304	Add	25 Jan 21 05:59:57 UTC	4
36692	177.124.99.0/24	36692 ◀ 3257 ◀ 3356 ◀ 267469 ◀ 28642 ◀ 2...	3257:8784 3257:30147 3257:50	Add	25 Jan 21 05:59:55 UTC	5
36692	192.206.204.0/24	36692 ◀ 2914 ◀ 3356 ◀ 209 ◀ 53853	2914:420 2914:1005 2914:2000	Add	25 Jan 21 05:59:47 UTC	6
36692	185.137.56.0/22	36692 ◀ 2914 ◀ 29119	2914:410 2914:1204 2914:2205	Add	25 Jan 21 05:59:45 UTC	7
36692	45.251.48.0/22	--	--	Delete	25 Jan 21 05:59:44 UTC	8
36692	67.201.98.0/24	36692 ◀ 2914 ◀ 701	2914:420 2914:1005 2914:2000	Add	25 Jan 21 05:59:42 UTC	9
36692	62.201.195.0/24	36692 ◀ 2914 ◀ 3356 ◀ 44217	2914:420 2914:1405 2914:2406	Add	25 Jan 21 05:59:41 UTC	10
36692	130.137.81.0/24	36692 ◀ 2914 ◀ 174 ◀ 16509	2914:420 2914:1005 2914:2000	Add	25 Jan 21 05:59:40 UTC	11
36692	103.161.104.0/24	36692 ◀ 4637 ◀ 6461 ◀ 2914 ◀ 10075 ◀ 137...	4637:33052 4637:33314 4637:3	Add	25 Jan 21 05:59:40 UTC	12
36692	68.142.0.0/19	36692 ◀ 2914 ◀ 174 ◀ 11280	2914:420 2914:1005 2914:2000	Add	25 Jan 21 05:59:39 UTC	13

Viewing 1 – 14 of 114 Records

The background of the slide is decorated with a pattern of circles of various sizes and colors. On the right side, there is a dense cluster of circles in shades of blue, green, orange, and red. On the left side, there are fewer, more sparsely distributed circles in light blue and grey.

Demo

Network Insights
External BGP Monitoring

Traffic Analysis



Crosswork Traffic Analysis



Monitor

Overview

Devices

Interfaces

Prefixes

ASNs

Tools

Traffic Comparison

Peer Prospecting

Configure

Devices

Data Gateways

Credentials

Device Groups

Removed Devices

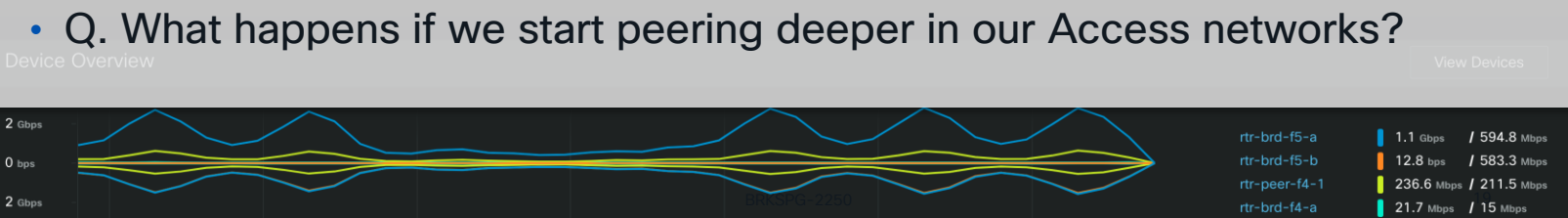
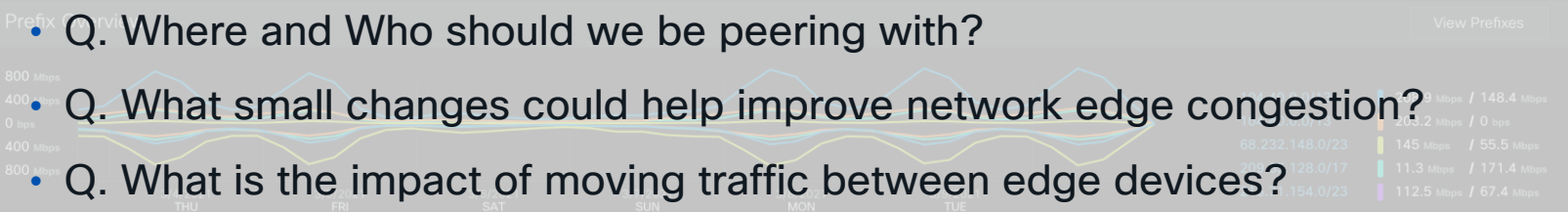
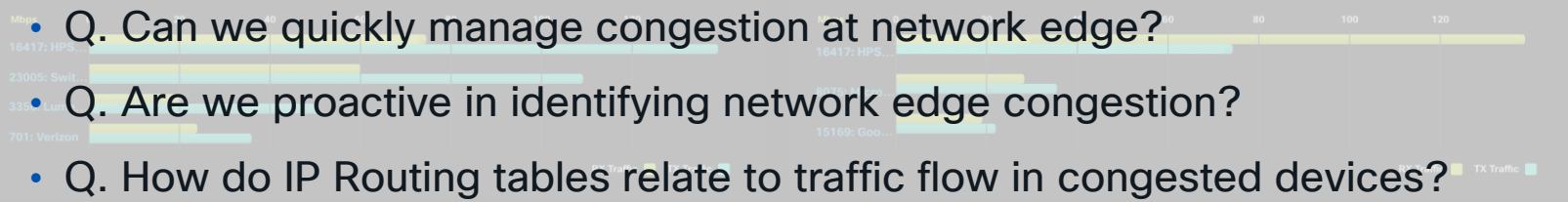


CrossworkCloud
Traffic Analysis | Help with this page

Dan Backman DB
HPS-CIE | Read Write

Time Last Week Updated 7:08 PM

Cloud-Delivered NetFlow Traffic Analytics

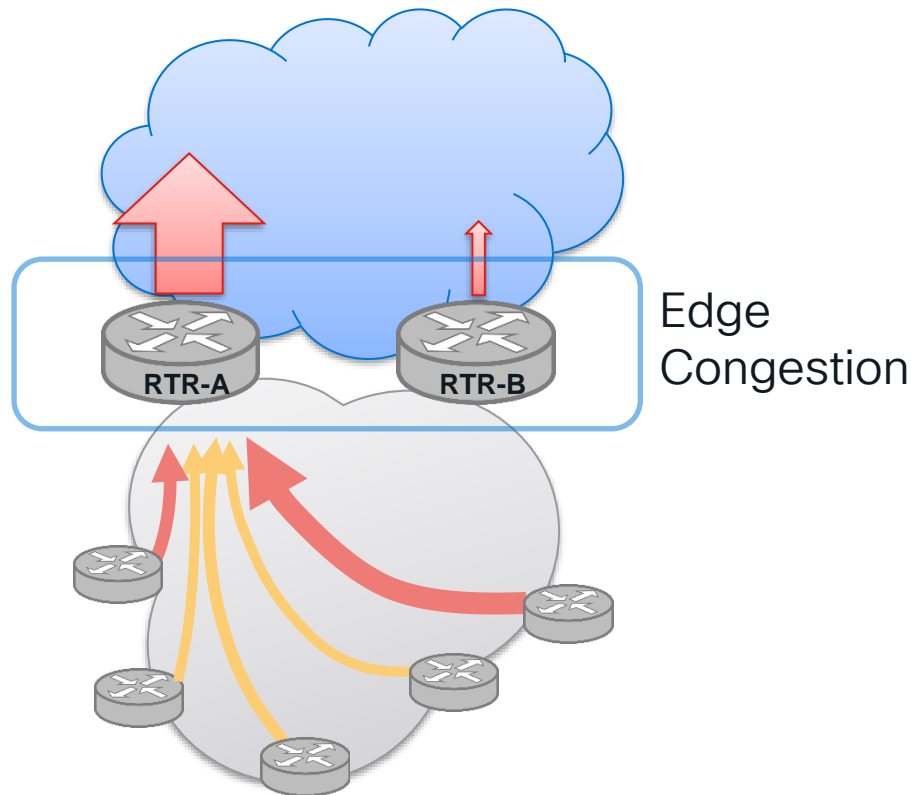




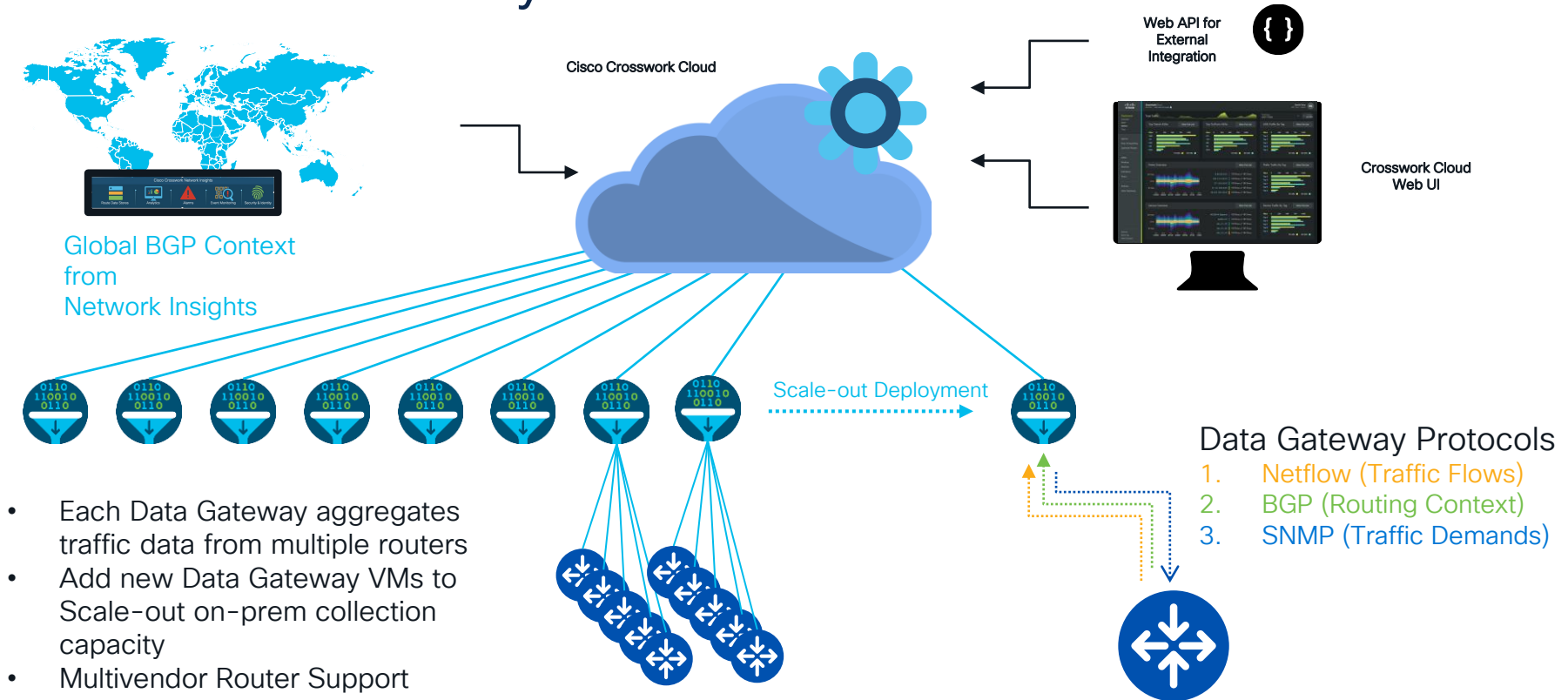
Where is Traffic Analysis needed

When Edge Congestion occurs, Operators need to understand the root cause and what actions they can take.

- Network Operators control Routing not Application Protocols
- Protocol Information tells us what the traffic is, but Routing is the key to making changes.
- Network Operators need to understand the source of flows and the size in order to quickly identify what actions can be taken



How Traffic Analysis Works





Traffic Analysis - ASN and Prefix Analysis





Traffic Analysis – Traffic Drilldown

Monitor

Overview

Devices

Interfaces

Prefixes

ASNs

Tools

Traffic Drilldown

Traffic Comparison

Peer Prospecting

Recommendations

Configure

Devices

Data Gateways

Credentials

Device Groups

Removed Devices

Setup Checklist

CrossworkCloud

Traffic Drilldown | Help with this page

Device Centric

Prefix Centric

Time
Last Day

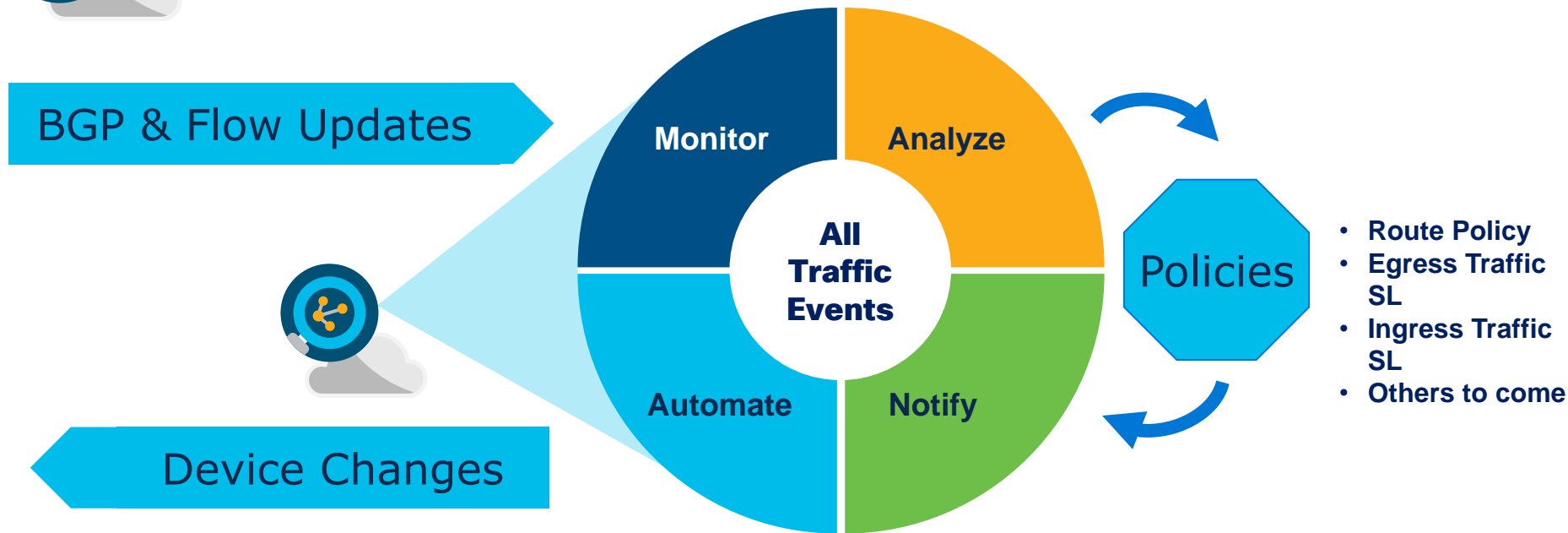
Device Click name to drilldown	Interface Click name to drilldown	Description Add Filter	Type Add Filter	Utilization Add Filter	Capacity Add Filter	TX: SNMP	RX: SNMP	Tags Add Filter	
▲ FYHA-NMSR-CI-001	▲ HundredGigE0/3/0/18 ...	*Connected to FRA, FRA-M...	Internal	53%	100 Gbps	9.4 Gbps	52.9 Gbps		1
■ MLQ2-NMSR-CI-001	▲ TenGigE0/2/0/2	*Connected to FRANKFURT, ...	Internal	53%	10 Gbps	917.1 Mbps	5.3 Gbps		2
▲ ADAM-NMSR-CI-001	▲ HundredGigE0/3/0/18 ...	*Connected to FRA, FRA-M...	Internal	52%	10 Gbps	911.7 Mbps	5.2 Gbps		3
■ SULM-NMSR-CI-001	▲ HundredGigE0/3/0/18 ...	*Connected to FRA, FRA-M...	Internal	52%	10 Gbps	900.4 Mbps	5.2 Gbps		4
■ FRAN-NMSR-CI-001	▲ HundredGigE0/3/0/18 ...	*Connected to FRA, FRA-M...	Internal	52%	10 Gbps	896.9 Mbps	5.2 Gbps		5
■ JED1-NMSR-CI-001	▲ HundredGigE0/3/0/18 ...	*Connected to FRA, FRA-M...	Internal	52%	10 Gbps	898.5 Mbps	5.2 Gbps		6
■ ADAM-NMSR-CI-002	▲ HundredGigE0/3/0/18 ...	*Connected to FRA, FRA-M...	Internal	52%	10 Gbps	898.8 Mbps	5.2 Gbps		7
■ AMST-NMSR-CI-001	▲ HundredGigE0/3/0/18 ...	*Connected to FRA, FRA-M...	Internal	52%	10 Gbps	891.9 Mbps	5.2 Gbps		8
■ MARS-NMSR-CI-001	▲ HundredGigE0/3/0/18 ...	*Connected to FRA, FRA-M...	Internal	52%	10 Gbps	893 Mbps	5.2 Gbps		9
■ FUJA-NMSR-CI-001	▲ HundredGigE0/3/0/18 ...	*Connected to FRA, FRA-M...	Internal	52%	10 Gbps	898.3 Mbps	5.2 Gbps		10
▲ SING-NMSR-CI-001	▲ HundredGigE0/3/0/18 ...	*Connected to FRA, FRA-M...	Internal	52%	10 Gbps	895.9 Mbps	5.2 Gbps		11
■ DUXB-NMSR-CI-001	▲ HundredGigE0/3/0/18 ...	*Connected to FRA, FRA-M...	Internal	52%	10 Gbps	893.4 Mbps	5.2 Gbps		12
	▲ TenGigE0/1/0/2	*Connected to FRA, FRA-M...	Internal	51%	10 Gbps	906 Mbps	5.1 Gbps		13
	▲ TenGigE0/1/0/1	*Connected to FRA, FRA-M...	Internal	51%	10 Gbps	904.7 Mbps	5.1 Gbps		14
	▲ TenGigE0/1/2/0	*Connected to FRA, FRA-M...	Internal	51%	10 Gbps	916.7 Mbps	5.1 Gbps		15
	■ TenGigE0/1/2/7	<<BE11-T.LEVEL3-LANPHY-...	External	49%	10 Gbps	1.9 Mbps	4.9 Gbps		16
	■ Bundle-Ether11	<<T.LEVEL3-LANPHY-FYHA...	External	49%	20 Gbps	3.8 Mbps	9.8 Gbps	<div>IPT-Link</div>	17

Viewing 1-12 of 12

Viewing 1-17 of 176



From Analysis to Intent based Automation



Intent is expressed as “What should be ”

Policies = Intent, they trigger notification actions

Actions can be Manual or Automated based on business value

Cloud Benefits: Data Sharing via Cloud API



Collaboration

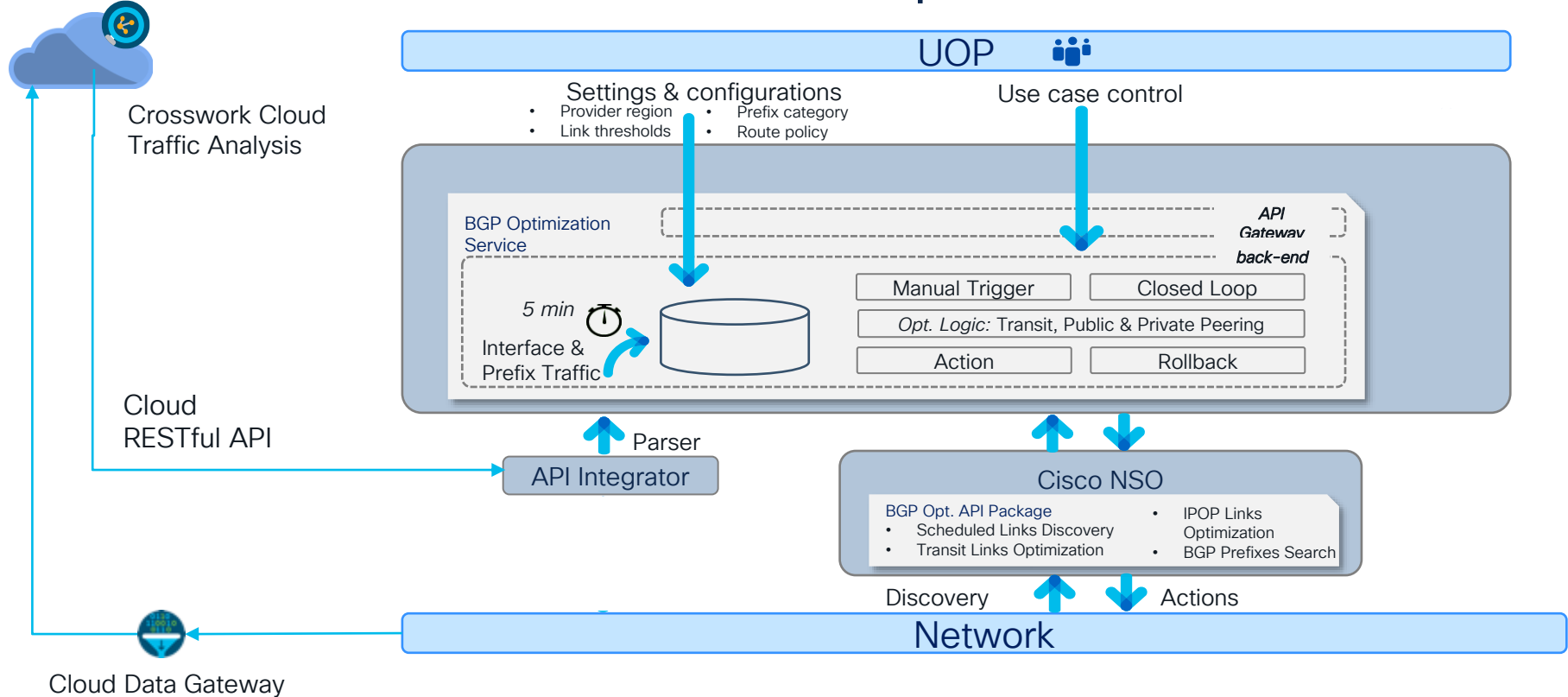
- Cloud service allows shared access between departments within your network (opt-in with vendors or partners) with no additional infrastructure



Cloud-based API access

- Crosswork Cloud can become a data provider for other operational systems
- Common point of integration for API access to inventory data
- Simple integration to external cloud services and SIEM systems

API: SPIS Automated BGP Optimization



Demo

Traffic Analysis

Netflow Analytics as a Service

Data Gateway Cloud-to-Ground Connectivity

Connecting Crosswork Cloud to your network

Cisco's Cloud is hosted by Cisco in a secure environment



You need a secure way to connect these two

You need an operationally simple and reliable method to deploy this secure layer

You need a solution that can scale to whatever your network demands are today *and* tomorrow

You have devices in
your secure network



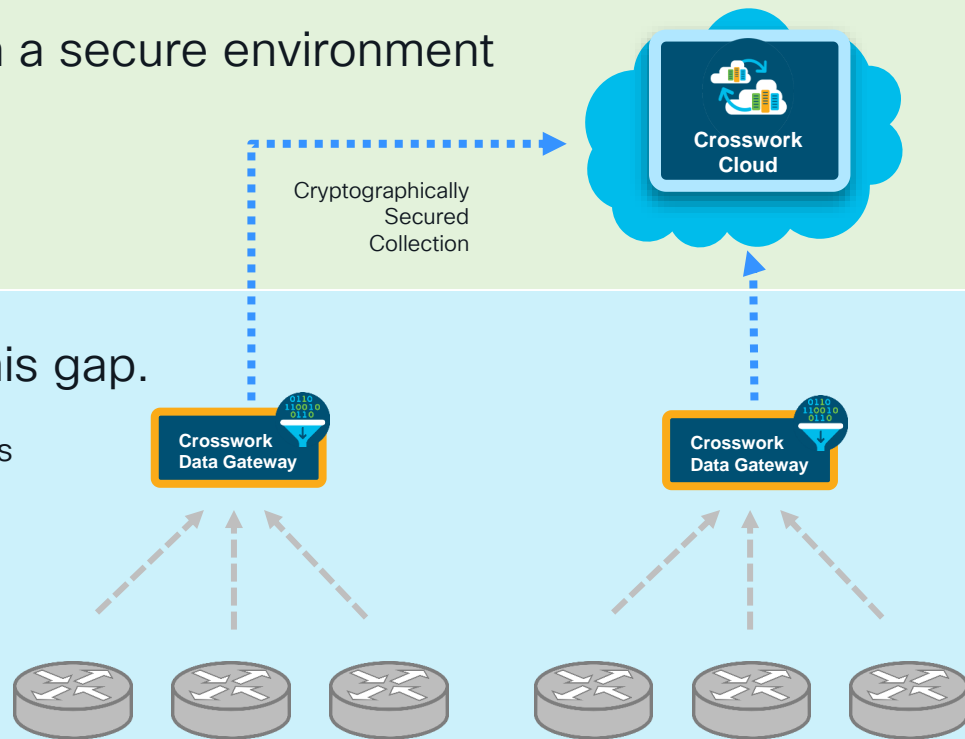
Connecting Cisco's Cloud to your network

Cisco's Cloud is hosted by Cisco in a secure environment

Crosswork Data Gateway bridges this gap.

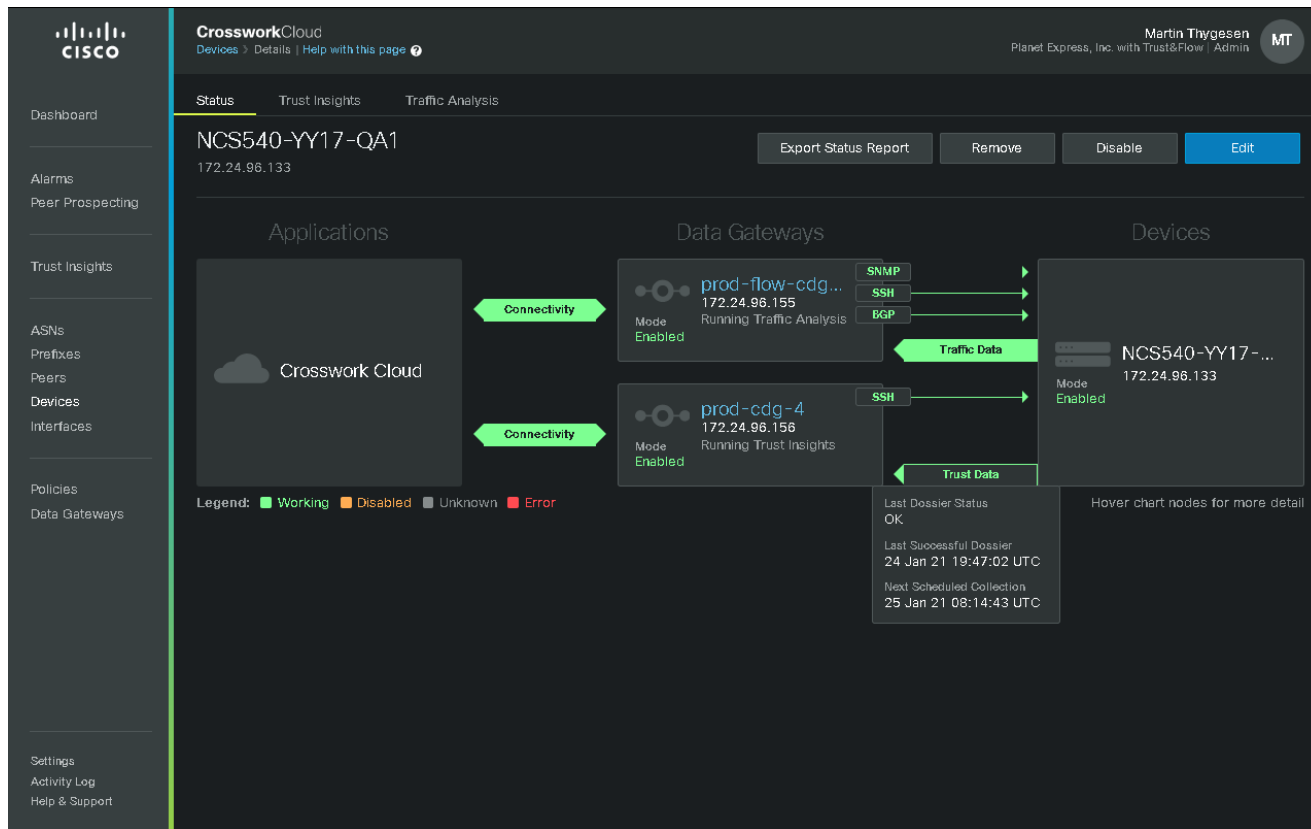
- **Secure connectivity** to Crosswork Cloud
- **Simple and repeatable** deployment model with VMs
- **Scales** as you grow with a horizontal design
- Deploys **on premise** in your secure network

You have devices in your secure network



Crosswork Data Gateway

- Visibility of connection state
- Clear linkage between protocol collection and devices
- Platform health, resource management & reporting



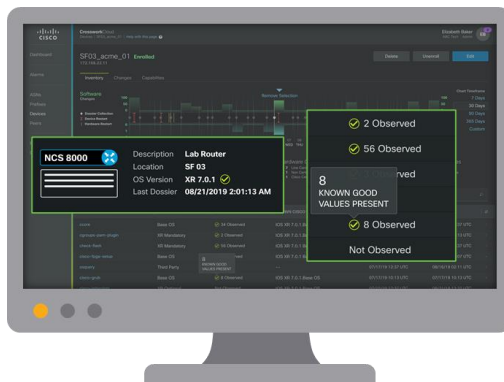
Trust Insights: XR Inventory and Integrity

Crosswork Trust Insights

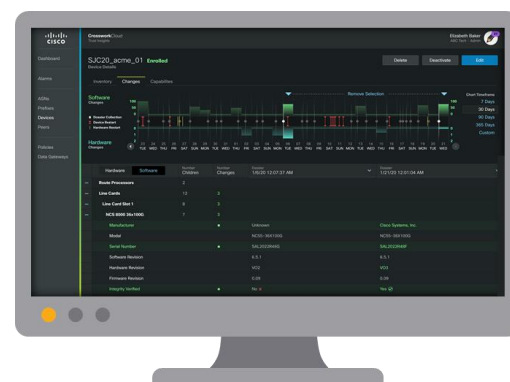
- Cloud-enabled IOS XR 7



Security Capabilities
and Software Reporting



Trustworthiness
Report and Audit



Forensic Analysis



Trust in the network operating system with image signing and secure boot infrastructure



Trust at runtime with run time defense, encrypted transport, DDoS protection



Visualize and report on the trustworthiness of network infrastructure



Operation simplicity that provides a source of truth with your infrastructure (hardware, software, runtime)

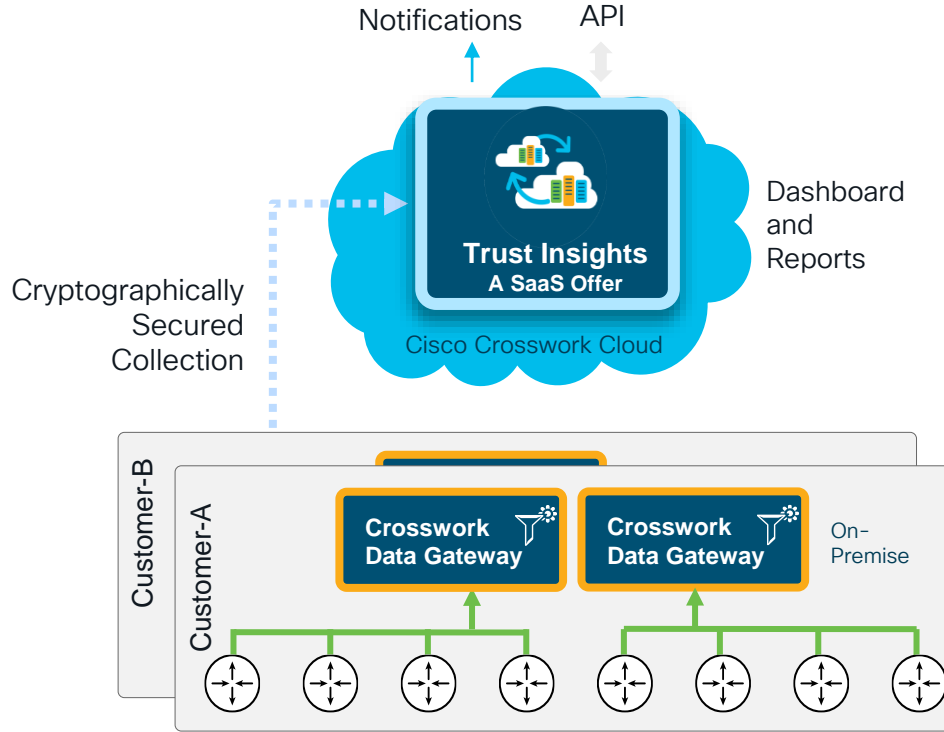


Track changes in infrastructure over time



Cryptographic and verifiable proof of what happened in the past

Crosswork Trust Insights Architecture



- On-Premises Data Gateway collects signed trust dossier from IOS XR Routers
- Dossier is human-readable
- Utilizes up-to-date feed of Known-Good-Values (KGV) from IOS XR Build and Regression
- Constantly evolving analytics of hardware and software fingerprints in Cloud Service

Dashboard

Alarms

Trust Insights

ASNs

Prefixes

Peers

Devices

Policies

Data Gateways

Settings
Activity Log
Help & Support

Status Trust Insights

NCS8001-Spitfire

172.27.150.118

SJC20

Collect Dossier

Remove

Disable

Edit

Platform

Inventory

Changes

Capabilities

Model
NCS_8000

Location
SJC20

OS Version
7.0.12

Uptime
7 weeks, 1 day, 6 hours, 40 minutes

Last Successful Dossier
27 day(s) ago

Last Dossier Status
OK

Description
--

Use The Chart Below To Modify Selection
12/15/2020 12:20:58 PM

Software
Changes 0
1542
771
0
0

Hardware
Changes 0
1
2

Timeframe

7 Days

30 Days

90 Days

365 Days

Custom

Reset Chart

1542

771

157

Valid Dossiers

0

0

1

25

Dossier Errors

2

Hardware

Software

Quick Search

Package Name	Category	Known Cisco Release	Architecture	Release	Version	Built Time	Hashes Seen
cisco-grub	Os Base	RPM 7.0.12	corei7_64	0.29	1.0	3/9/2020 7:34:48 AM	Details
base-files	Os Base	RPM 7.0.12	wrldsk_x86	89.7	3.0.14	3/9/2020 7:29:01 AM	Details
kernel-image-bzimage-4.8.28-wr9	Os Base	RPM 7.0.12	wrldsk_x86	0.169	4.8.28	3/9/2020 7:29:01 AM	Details
kernel-module-br-netfilter	Os Base	RPM 7.0.12	wrldsk_x86	0.169	4.8.28	3/9/2020 7:29:01 AM	Details
kernel-module-bridge	Os Base	RPM 7.0.12	wrldsk_x86	0.169	4.8.28	3/9/2020 7:29:01 AM	Details
kernel-module-cdc-eem	Os Base	RPM 7.0.12	wrldsk_x86	0.169	4.8.28	3/9/2020 7:29:01 AM	Details
kernel-module-cisco-fpga-qspi	Os Base	RPM 7.0.12	wrldsk_x86	0.65	1.0	3/9/2020 7:29:01 AM	Details

Viewing 1 - 7 of 1617 Records

BRKSPG-2250

Page 1 of 231

Operational Intelligence as a Service



Always-On, Automated KGV Feeds, Up-to-Date Analytics



No software to deploy and maintain



Instant Integration, Continuous Improvement



Reduced Operational Cost and Seamless Scalability





CrossworkCloud



CrossworkCloud

Trial Account Request

To activate your trial subscription, do the following:

1. Sign in with your existing Cisco Connection Online (CCO) account or create one [here](#)
2. Click Next. After user authentication, please complete the Trial Account Request form

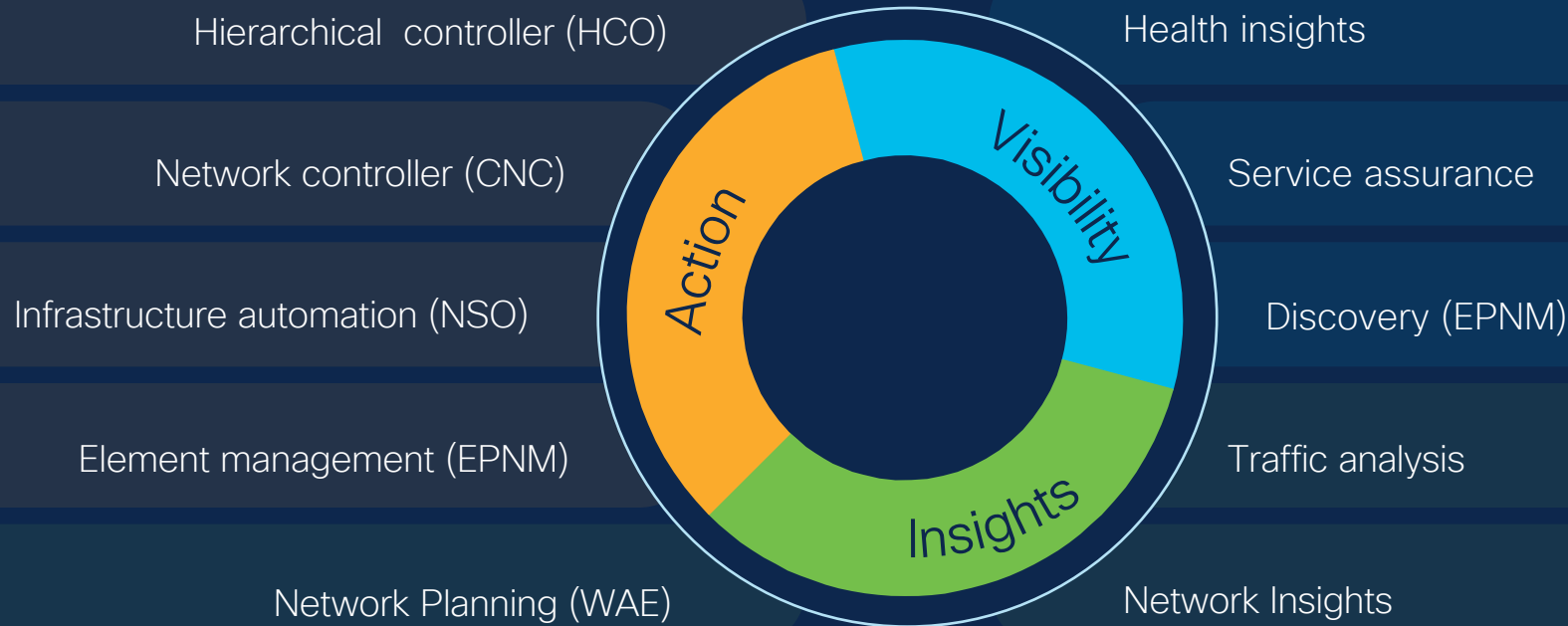
If you run into any issues or need more information, see the [Cisco Crosswork Cloud Trial Guide](#).

Next

Request a Trial

Interested in experiencing how Cisco Crosswork Cloud can help evaluate the routing health and telemetry of your network? Sign up for a free trial product account of Cisco Crosswork Cloud.

Crosswork gives you a comprehensive toolkit



For more
information on
Cisco's Automation
Portfolio please visit

cisco.com/go/crosswork

CISCO *Live!*

Cisco Crosswork Cloud

Crosswork Cloud is a powerful addition to any network operations using always-on, always-up to date, SaaS-based services to help improve routing health, increase network visibility, maintain trustworthy infrastructure, and generate network traffic insights.

[Watch video \(opens\)](#) [Free 30-day trial](#)

Transform your network operations with cloud-based automation

Crosswork Cloud is the most powerful automated analytics service that offers pervasive visibility, predictive insights, and intent-based actions.

- Powerful automated analytics**
Data-driven network analytics provide pervasive visibility, predictive insights, and intent-based actions to deliver optimal customer experiences.
- Operational simplicity**
Reduce internal operational complexity and speed up deployment with routing to deploy, implement, or manage on-premise. Always stay up to date with the most current features and feature velocity.
- Improved business agility**
Instantly available to meet increasing demand for resources when you need them. Free staff operations and security teams for strategic work that boosts the bottom line.
- Reduced cost with SaaS-based consumption**
Obtain financial benefits from moving IT costs from CapEx to OpEx with a pay-as-you-grow model.

[Read our case](#)

Crosswork Cloud components

- Crosswork Network Insights**
Network routing analysis to maintain routing health by monitoring route leaks and flaps.
[Read data sheet >](#)
- Crosswork Traffic Analysis**
Visualize, analyze, and optimize network traffic at distributed peering points to improve customer experience.
[Read data sheet >](#)
- Crosswork Trust Insights**
Gain operational visibility to preserve the trustworthiness of your network infrastructure.
[Read data sheet >](#)

Technical Session Surveys

- Attendees who fill out a minimum of four session surveys and the overall event survey will get Cisco Live branded socks!
- Attendees will also earn 100 points in the Cisco Live Game for every survey completed.
- These points help you get on the leaderboard and increase your chances of winning daily and grand prizes.



Cisco Learning and Certifications

From technology training and team development to Cisco certifications and learning plans, let us help you empower your business and career. www.cisco.com/go/certs

Pay for Learning with Cisco Learning Credits

(CLCs) are prepaid training vouchers redeemed directly with Cisco.



Learn

Cisco U.

IT learning hub that guides teams and learners toward their goals

Cisco Digital Learning

Subscription-based product, technology, and certification training

Cisco Modeling Labs

Network simulation platform for design, testing, and troubleshooting

Cisco Learning Network

Resource community portal for certifications and learning



Train

Cisco Training Bootcamps

Intensive team & individual automation and technology training programs

Cisco Learning Partner Program

Authorized training partners supporting Cisco technology and career certifications

Cisco Instructor-led and Virtual Instructor-led training

Accelerated curriculum of product, technology, and certification courses



Certify

Cisco Certifications and Specialist Certifications

Award-winning certification program empowers students and IT Professionals to advance their technical careers

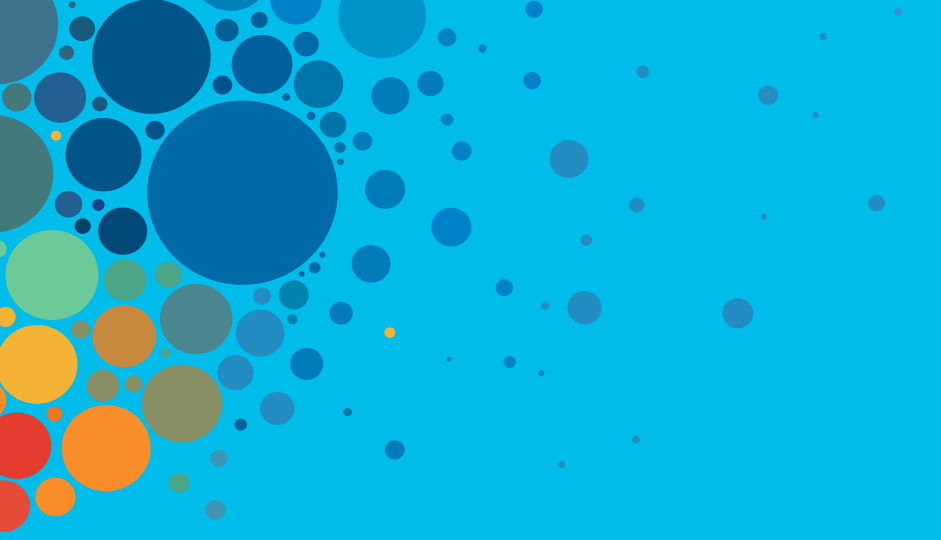
Cisco Guided Study Groups

180-day certification prep program with learning and support

Cisco Continuing Education Program

Recertification training options for Cisco certified individuals

Here at the event? Visit us at **The Learning and Certifications lounge at the World of Solutions**



Continue your education

- Visit the Cisco Showcase for related demos
- Book your one-on-one Meet the Engineer meeting
- Attend the interactive education with DevNet, Capture the Flag, and Walk-in Labs
- Visit the On-Demand Library for more sessions at www.CiscoLive.com/on-demand



The bridge to possible

Thank you

CISCO *Live!*



#CiscoLive