

The Cisco Live! logo features the word "CISCO" in a bold, black, sans-serif font, followed by "Live!" in a black, cursive script font. The background is a vibrant, multi-colored abstract pattern of overlapping, wavy bands in shades of red, orange, yellow, green, and blue, radiating from a bright white center on the right side.

CISCO *Live!*

Let's go

#CiscoLive



The bridge to possible

# Making Meraki SDWAN ThousandEyes Aware

Slash Mean-Time-To-Resolve!

Nikitha Shashidhar, Product Manager – Cisco Meraki

Tyler Duzan, Product Manager – ThousandEyes

PSOAPP-1618

CISCO *Live!*

#CiscoLive



# Cisco Webex App

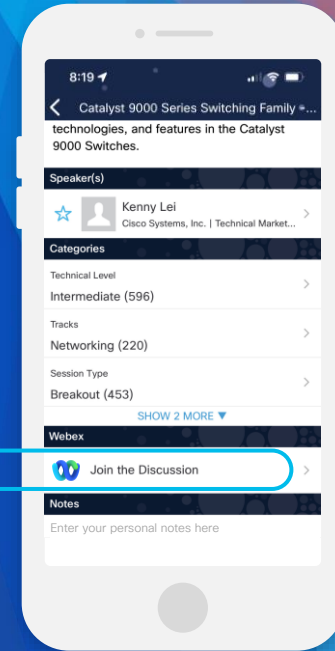
## Questions?

Use Cisco Webex App to chat with the speaker after the session

## How

- 1 Find this session in the Cisco Live Mobile App
- 2 Click “Join the Discussion”
- 3 Install the Webex App or go directly to the Webex space
- 4 Enter messages/questions in the Webex space

Webex spaces will be moderated by the speaker until June 9, 2023.



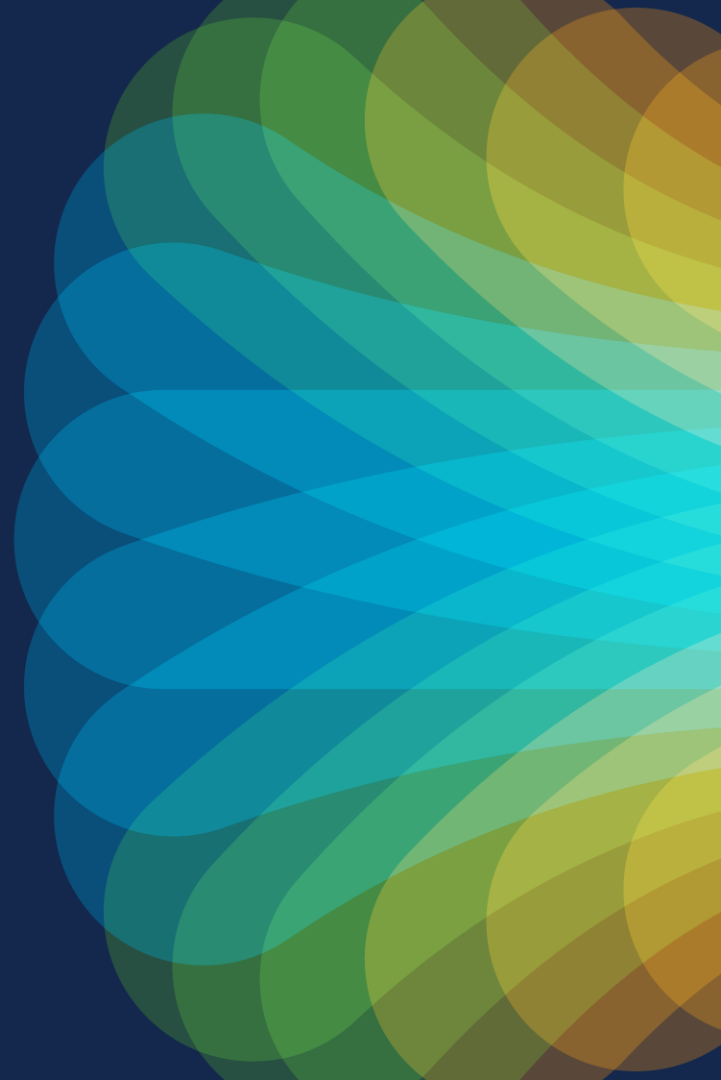
<https://cislive.ciscoevents.com/cislivebot/#PSOAPP-1618>

# Agenda

CISCO *Live!*

- Overview of ThousandEyes
- Overview of Meraki MX & Cloud Platform
- Accelerating Troubleshooting
- Bringing ThousandEyes to the Meraki Cloud Platform
- Demo
- Q&A

# Overview of ThousandEyes



# We're in a new world

Your Apps

Your People

Your Infrastructure

All distributed



Visibility and control  
is **shrinking**

External  
dependencies  
are exponentially  
**growing**



See, understand,  
and improve  
digital experiences  
everywhere

CISCO *Live!*





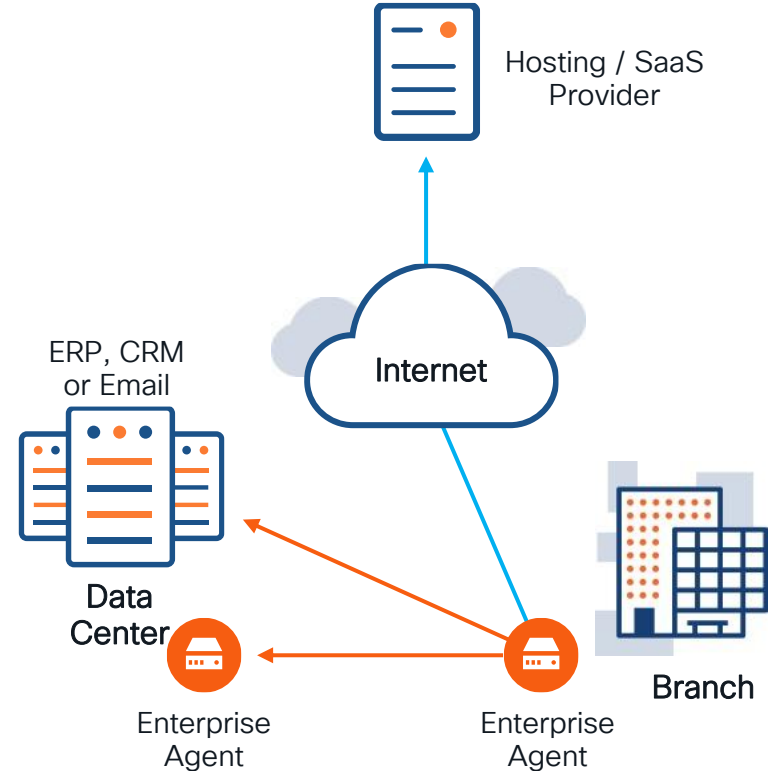
Our Solution

# Visualize services end-to-end across every domain



# What is an Enterprise Agent?

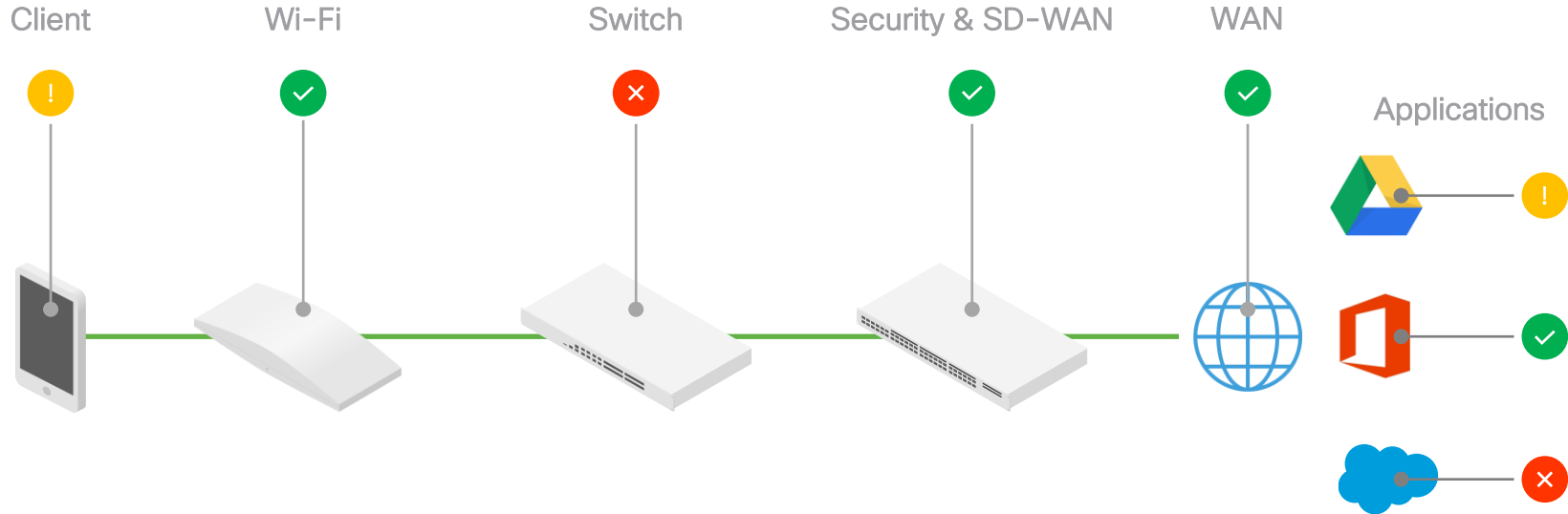
- Software agents **actively** monitoring the network
- Designed to run on many different platforms with minimal requirements
- Deployed **within** your enterprise network



# Overview of Meraki MX & Cloud Platform

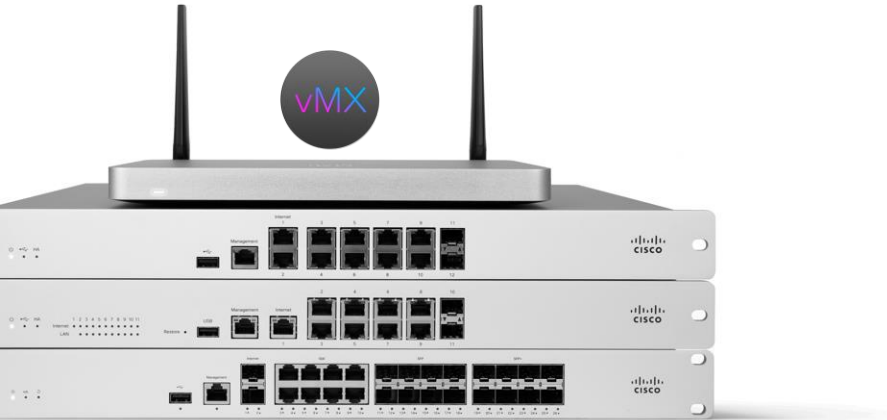
*Simplifying powerful technology to free  
passionate people to focus on their mission*

# Unique end-to-end platform visibility



# Delivered by Meraki SASE building blocks

MX security and SD-WAN appliances



## Highlights across models



Up to x4 WAN ports



3G / 4G / LTE USB as  
single-WAN or failover



Models with embedded LTE  
modem



High availability mode and  
automatic WAN failover

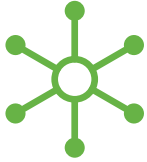


Additional Ethernet ports  
with PoE/PoE+ options



Virtual appliances for  
hybrid cloud

# Go beyond traditional SD-WAN



Fastest way to  
scale SD-WAN



The right security  
at unmatched  
speed & scale



End-to-end  
ML-powered QoE  
troubleshooting

# Accelerating Troubleshooting





# Turbo charge troubleshooting

ML applied to mountains of platform data



## 1. Identify

Smart Thresholds automatically applied and adjusted for critical apps

Truly anomalous behavior identified based on historic trends of specific networks



## 2. Analyze

App degradation data across the LAN, WAN, and app servers analyzed

Smart RCA recommends corrective action with a confidence rating



## 3. Correct

Apply corrective action on Meraki devices with the Meraki dashboard

Get faster corrective action by contacting ISP or app server provider with specific details

# At-a-glance health monitoring

Critical apps & WAN uplinks



**WAN Health**

Monitor ALL of your organization's diverse uplinks, including cellular, and home-user uplinks, in one view.



**Web App Health**

At-a-glance performance of critical applications across your LAN, WAN, and application server—wherever it is.

 **Meraki**



**ThousandEyes**   
part of Cisco

Better Together <-> Unified Experience

# Fast Scalable Continuous SaaS App Monitoring

## Benefits of ThousandEyes with Meraki

### Instantly activate at Scale

Reduce operation workstreams with Meraki Dashboard

### Continuously monitor

Provide visibility to SaaS apps at **regular intervals** to give IT admins more validity of the issue in addition to real time user traffic with app health

### Reduce Adverse Impact

Proactive monitoring to **reduce impact** and helps communicate up and across.

All on **Meraki** cloud platform

# Follow up Sessions at Cisco Live!

 The bridge to possible

## How Meraki and ThousandEyes Together are solving your Application Performance Issues with Simplicity

Making Fast, Easy and Scalable

Nikitha Shashidhar – Product Manager, Cisco Meraki  
Alex Taipale - Engineering Manager, Cisco Meraki  
BRKMER - 2007

 #CiscoLive

 The bridge to possible

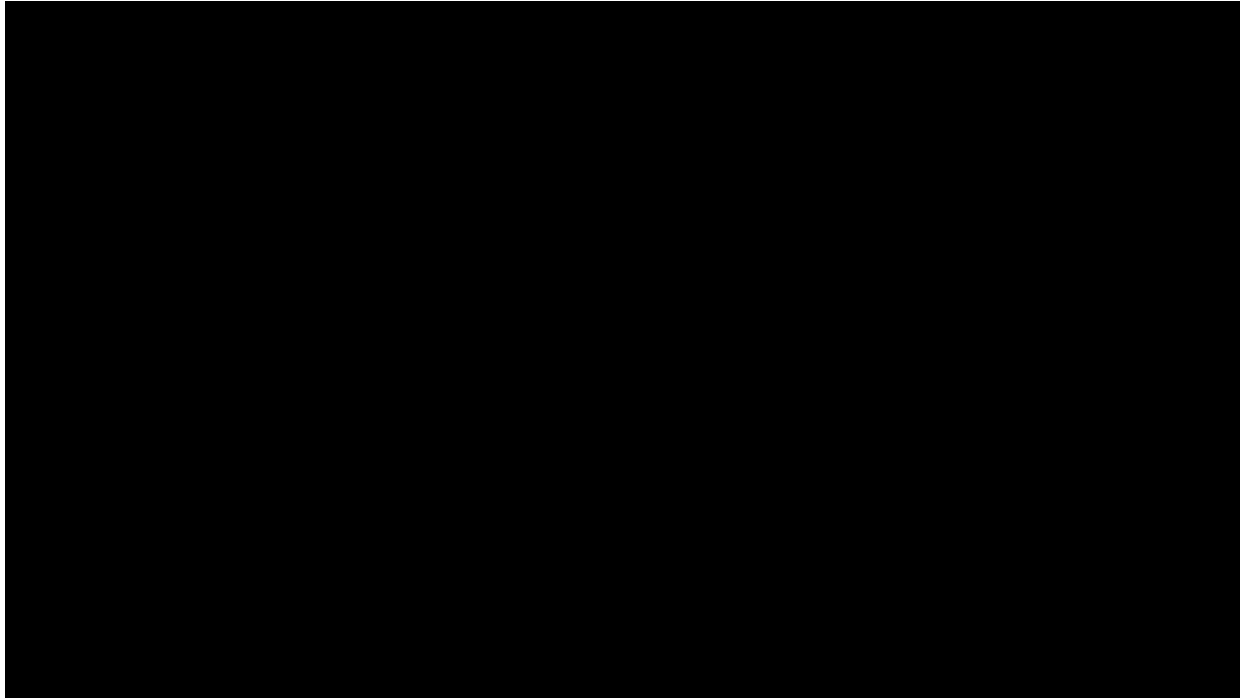
## Journey to Hosting Containers on Meraki with ThousandEyes

Tyler Duzan, Sr. Product Manager – ThousandEyes  
Taylor Byrnes, Software Engineering Technical Leader – Meraki  
BRKAPP-2727

 #CiscoLive

# Customer Use Case Story

# Demo





# Prep that Network!

## SMALL BRANCH



### MX67/68

Up to 50 users  
600 Mbps FW throughput  
Wi-Fi & PoE



### MX67C/68CW

Up to 50 users  
600 Mbps FW throughput  
Wi-Fi & PoE  
CAT 6 LTE modem



### MX75

Up to 250 users  
1 Gbps FW throughput  
WAN PoE

## MX18.1

## SDW+ License

## MEDIUM TO LARGE BRANCH



### MX85

Up to 250 users  
1 Gbps FW throughput



### MX95

Up to 500 users  
2 Gbps FW throughput



### MX105

Up to 750 users  
3 Gbps FW throughput

## CAMPUS / LARGE ENTERPRISE



### MX250

Up to 2,000 users  
4 Gbps FW  
throughput



### MX450

Up to 10,000 users  
6 Gbps FW  
throughput

*Visit us in the Cisco Networking Booth #3303 in  
World of Solutions for a live demo and Q&A*

# Fill out your session surveys!



Attendees who fill out a minimum of four session surveys and the overall event survey will get **Cisco Live-branded socks** (while supplies last)!



Attendees will also earn 100 points in the **Cisco Live Challenge** for every survey completed.



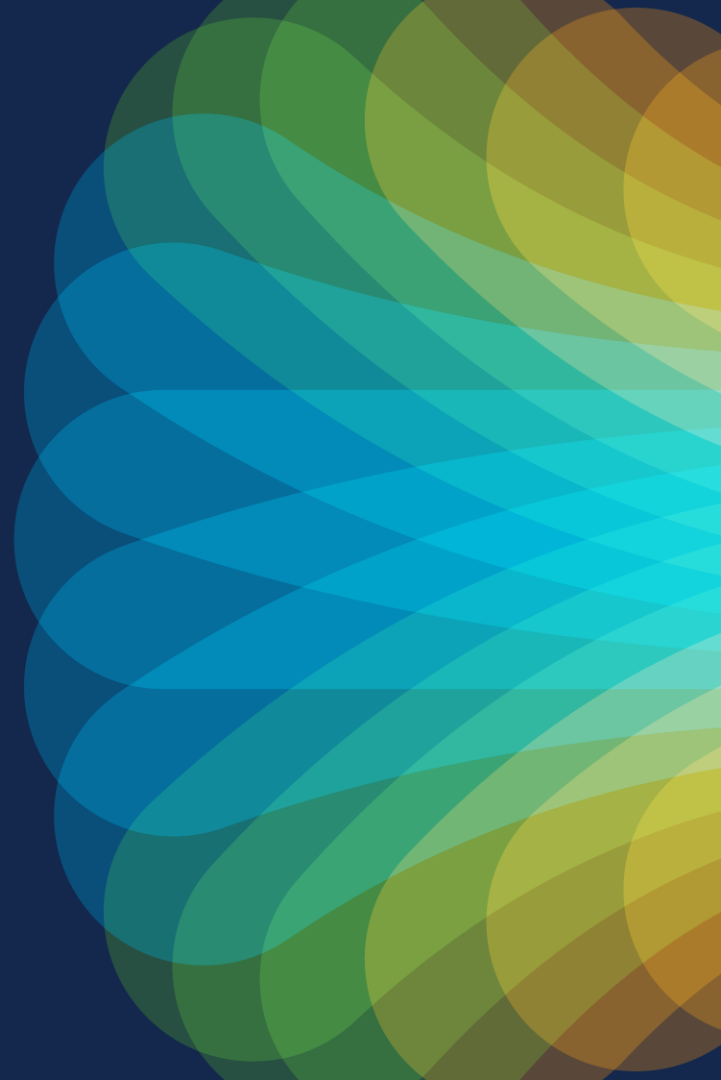
These points help you get on the leaderboard and increase your chances of winning daily and grand prizes

# Continue your education

CISCO *Live!*

- Visit the Cisco Showcase for related demos in booth #3303
- Book your one-on-one Meet the Engineer meeting
- Attend the interactive education with DevNet, Capture the Flag, and Walk-in Labs
- Visit the On-Demand Library for more sessions at [www.CiscoLive.com/on-demand](http://www.CiscoLive.com/on-demand)

Thank you

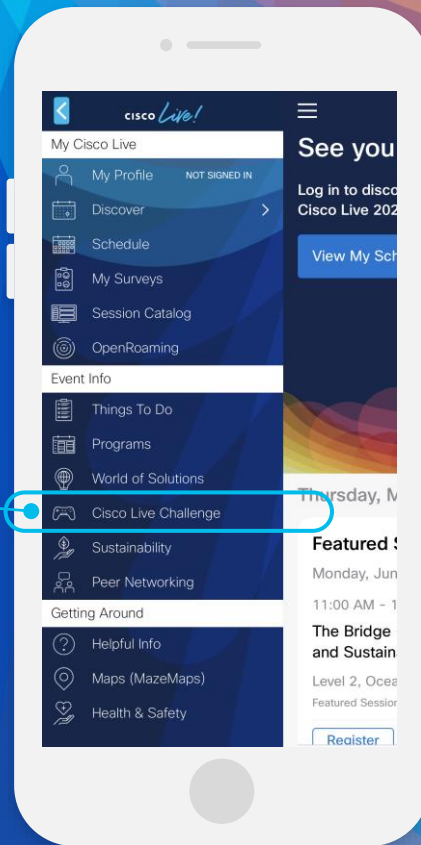
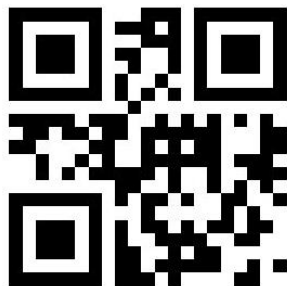


# Cisco Live Challenge

Gamify your Cisco Live experience!  
Get points for attending this session!

## How:

- 1 Open the Cisco Events App.
- 2 Click on 'Cisco Live Challenge' in the side menu.
- 3 Click on View Your Badges at the top.
- 4 Click the + at the bottom of the screen and scan the QR code:



The Cisco Live! logo features the word "CISCO" in a bold, black, sans-serif font, followed by "Live!" in a black, cursive script font. The background of the entire image is a vibrant, multi-colored abstract pattern of overlapping, wavy bands in shades of red, orange, yellow, green, and blue, radiating from a bright white point on the right side.

CISCO *Live!*

Let's go

#CiscoLive